

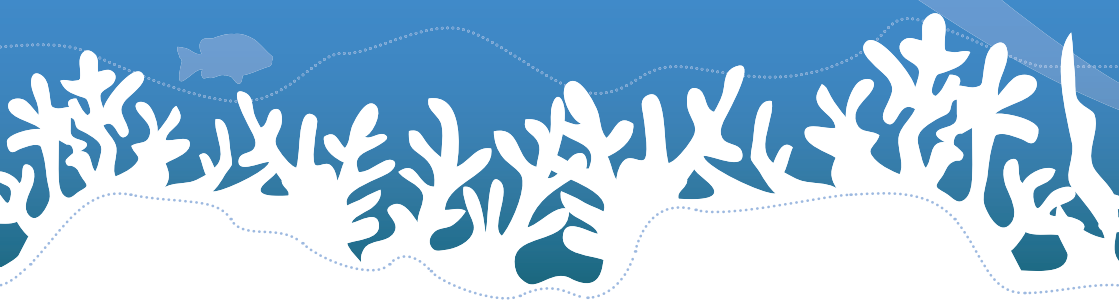


Your guide to
**HOUSEHOLD
WASTE &
RECYCLING**
on St Mary's



Council of the
ISLES OF SCILLY

For more information:
Tel: **01720 424450**
Email: infrastructure@scilly.gov.uk



Recycling Collections for Householders

The Council will collect your dry mixed recycling sacks on the same day your black bag waste is collected. For all householders, recycling sacks will be delivered to your house twice a year, free of charge. If you require more sacks you will need to apply by calling 01720 424450. Sacks supplied are strictly for your household recycling collections.

What you can include in your BLUE recycling sacks



Mixed recycling - please make sure everything is clean and dry before placing in the recycling sacks. Please ensure that all recyclable material is placed inside the sack and tied at the top. Any over-sized 'side' items will not be collected. Any sacks which do not meet requirements will not be collected.



Cardboard



(e.g cereal boxes, cardboard boxes, egg boxes)



Cartons (not Tetra Pak)



(e.g fruit juice cartons, milk cartons)



Food tins and cans



(e.g. soup tins, fizzy drink cans)



Mixed paper including shredded paper



(e.g. directories, books and newspaper)



Plastic bottles



(e.g. milk bottles, detergent and fabric conditioner bottles, drinks bottles, cooking oil bottles, bleach and cleaning fluid containers, shampoo bottles and their lids)



Plastic tubs, pots and trays



(e.g. margarine and ice cream tubs, yoghurt pots, fruit punnets, food trays, **NOT black plastic trays**) Please remove any film lids and absorbent pads in the bottom of trays and put these in your general waste sack.

Contact us
for a Large Print
version of this
leaflet

Waste Collections for Householders

Some waste items can't be included in your mixed recycling & need to be placed in standard black waste sacks, which you provide. We want to ensure only the right items are collected for recycling. Putting the wrong items in your recycling sacks can cause contamination, which affects the quality of recycling collected. The Council will collect your waste on the same day as your mixed recycling.

Please put these in your **BLACK** waste sacks

Please ensure that all waste items are placed inside your black sacks and tied at the top. Any over-sized 'side' items will not be collected. Any sacks which do not meet requirements will not be collected.



Black Plastic Trays



Plastic Wrapping & Tubes



Polystyrene



Any Food Waste which cannot be composted at home



Paper covered in glue or glitter



Nappies



Foil Lined Packets



... and any other dirty materials which cannot be recycled



How do I RECYCLE material which the Council can't collect?



How do I dispose of WASTE materials the Council can't collect?



Material	Recycling Location
Glass bottles & Jars	FREE. Porthmellon HWRC (Tuesday/Thursday pm) Bring site bottle banks located at the Strand, rear of the Town Hall, Telegraph and Nowhere car park in Old Town.
Cooking Oil	FREE. Porthmellon HWRC (Tues/Thurs pm)
Scrap Metal*	FREE. Porthmellon HWRC (Tues/Thurs pm)
Green Garden Waste	FREE. Porthmellon HWRC (Tues/Thurs pm)
Textiles (clothing and shoes)	FREE. Voluntary sector recycling bank (currently located at the rear of the Town Hall). Charity Shop
Small Household Batteries	FREE. Porthmellon HWRC (Tues/Thurs pm). Various collection points on St Mary's inc the Town Hall
Car Batteries	FREE. Porthmellon HWRC (Tues/Thurs pm)
Electrical Items*	FREE. Porthmellon HWRC (Tues/Thursday pm)
Household DIY Soil & Rubble*	Porthmellon HWRC (Tues/Thursday p.m)
Car & Bike Tyres*	Porthmellon HWRC (Tues/Thursday p.m)
Energy efficient lightbulbs & fluorescent tubes	FREE. Porthmellon HWRC (Tues/Thursday p.m)

Scrap Metal* Larger items including metal bed frames, filing cabinets, metal garden furniture & bikes. Small items including empty paint tins.

Electrical Items* Small items such as kettles, toaster, toys, hairdryers, radios. Large items including televisions, fridges & freezers and washing machines.

Household DIY Soil & Rubble* Includes breeze blocks, concrete, drainage pipes (ceramic and porcelain), gravel hardcore, paving slabs, rubble, sand, ceramic/porcelain toilets, shower trays, soil, slates/slabs, tarmac, tiles. Charges apply. No more than 8 bags are to be disposed of in one week.

Car & Bike Tyres* Charges apply. No more than 4 tyres per visit. Limited to 2 visits per year. Bike tyres are free.

Waste from Scilly is not going to landfill and is instead going to fuel an Energy from Waste plant. There are now strict regulations on what can be disposed of through your collections. Please bring the items below to the HWRC for correct sorting & disposal.

Waste	Disposal Location
Asbestos*	Porthmellon HWRC (Tues/Thursday p.m)
Plasterboard (including gypsum related products)	Porthmellon HWRC (Tues/Thursday p.m)
Waste Fuel Oil and Filters*	Porthmellon HWRC (Tues/Thursday p.m)
Paint*	Porthmellon HWRC (Tues/Thursday p.m)
Large bulky items of plastic (ie; toys) wooden items (ie; doors) beds etc	Porthmellon HWRC (Tues/Thursday p.m)
Household & Garden Chemicals*	FREE. Porthmellon HWRC (Tues/Thursday p.m)

The Porthmellon Household Waste & Recycling Centre (HWRC) is open for household waste and recycling on Tuesday and Thursday's 1pm to 4.45. If you require an **Assisted Collection** because you are elderly or have a disability please contact the Infrastructure Office for more information.

Asbestos* This material is hazardous and should be handled with care. Please contact the waste site in advance. Charges apply. All asbestos must be double bagged/wrapped in strong plastic. No more than 8 sheets are to be disposed of a week.

Waste Fuel Oil and Filters* FREE. Place in a labelled, sealed container. Filters and rags should be in a sealed plastic bag. Two visits a year.

Paint* Paint with hazardous symbols needs to be disposed of as hazardous waste. Please bring in sealed, labelled containers- 5 litre weekly limit. Emulsion paints (water based) placed with your household waste, please ensure the paint is hardened. Do not dispose of paint down the sink or into drains as it harms the environment.

Household/Garden Chemicals* Inc hazardous items ie; white spirit, anti-freeze, weed killers. Must be in sealed containers. Max 5 litres monthly limit.



Council of the ISLES OF SCILLY



For more information Tel: **01720 424450**
Email: **infrastructure@scilly.gov.uk**