



---

# Service Plan

## INTEGRATED YOUTH SUPPORT SERVICES



Council of the  
ISLES OF SCILLY

---

May 2012

---

# Council of the Isles of Scilly Integrated Youth Support Services Strategy 2012 – 2013

## Vision Statement of the Council of the Isles of Scilly

“The Council of the Isles of Scilly – a strong, sustainable and dynamic Island Community”

## Community Strategy Priorities 2006 – 2020

- Providing excellent services for children, young people and families
- Promoting healthy and inclusive communities, including endeavoring to meet the housing needs of all generations of our community
- Promoting economic vitality
- Protecting our outstanding natural environment
- Meeting the local transport and local infrastructure needs of our community

In 2012 /13 these objectives will continue to be addressed through our corporate improvement plan.

## Links to Corporate Objectives

The Integrated Youth Support Strategy will include targets and milestones to judge how well the service is progressing and describes how services for young people across the Isles of Scilly will work seamlessly to achieve these outcomes effectively as possible.

## Department Service Vision

- We aim to ensure that Members are provided with comprehensive and regularly updated knowledge of the regulations applicable to this service
- We aim to give clear, impartial and practical information on the services we provide to the public, children, young people and their parents
- We aim to provide services which are suitable to the circumstances and prompt in their implementation

## Integrated Youth Support Services Strategy 2012 / 2013

### Rationale

The purpose of the Integrated Youth Support Services Strategy is to set out the Council of the Isles of Scilly's detailed proposals for providing high quality Integrated Youth Support Services on Scilly until March 2013.

The service is able to make a strong contribution to the achievement of some of the core objectives set out in the Community strategy, namely;

- Providing excellent services for children, young people and families
- Promoting healthy and inclusive communities
- Promoting economic vitality

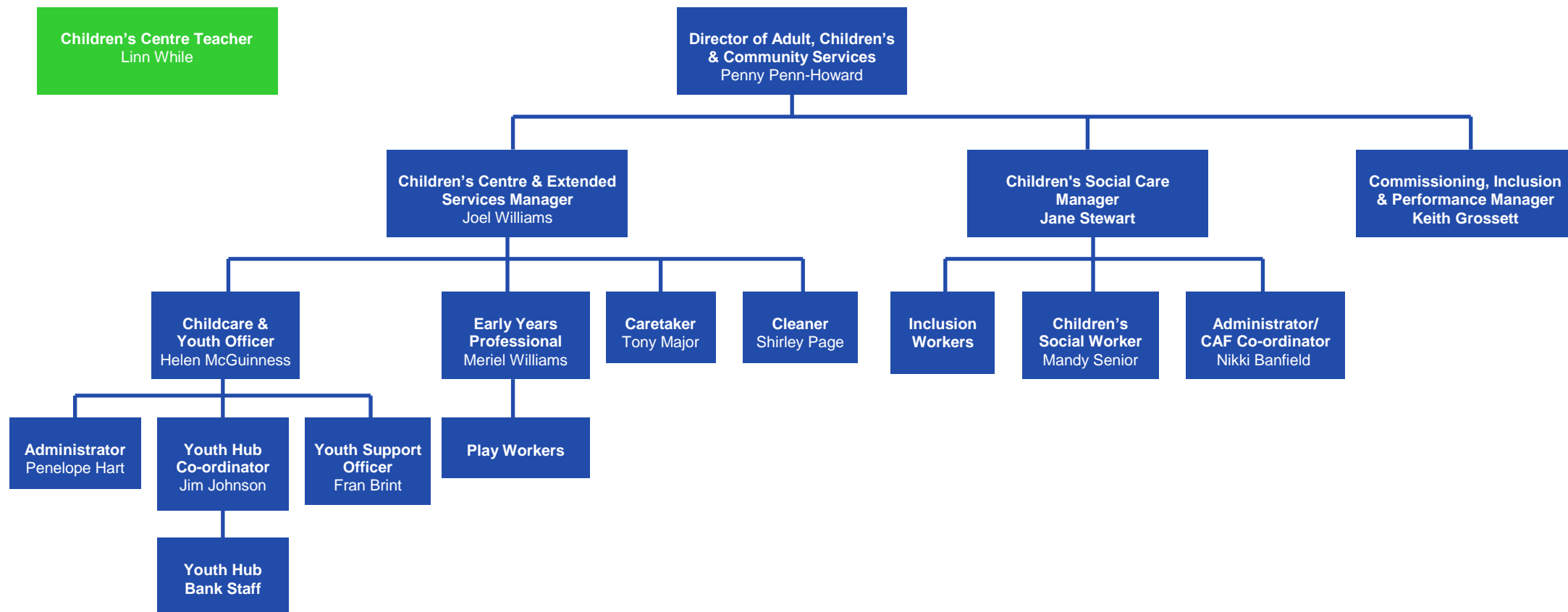
The rationale behind integrating youth support services is to ensure that all young people enjoy happy, healthy and safe teenage years that prepare them well for adult life and enable them to reach their full potential.

Within this process the expectation is for all agencies and services working with young people to integrate their work around the needs of young people to deliver the following five core functions;

- Integrated Youth Support Services which harness young people's health and well being
- Providing accessible and inclusive Positive Activities
- Empowering Young People's Participation and Engagement
- Supporting choices through high quality Information, Advice and Guidance (IAG) particularly in preparation for transition to the mainland at 16
- Retaining a highly qualified diverse Youth Workforce

In order to achieve these objectives a series of key actions and timelines are set at the back of this Service Plan. The Strategy and targets will be reviewed and refreshed annually.

To deliver this Service Plan we have the following staff and budgetary provision;



## Budgetary Provision

Budget: Youth Services	
Salaries, Recharges and Premises	£46,406
Post 16 Transition, IAG including Careers SW Contract	£38,000
Support for Positive Activities at the FIS and PVI providers	£19,500
Support for Positive Activities at the Youth Hub / Holidays	£23,500
Youth Offending Services	£3,500
Youth Participation	£2,500
Support for off island access	£1,500

## [Links to Local Plans](#)

The IYSS Plan will link with other strategic plans. There will be references to these plans throughout this document;

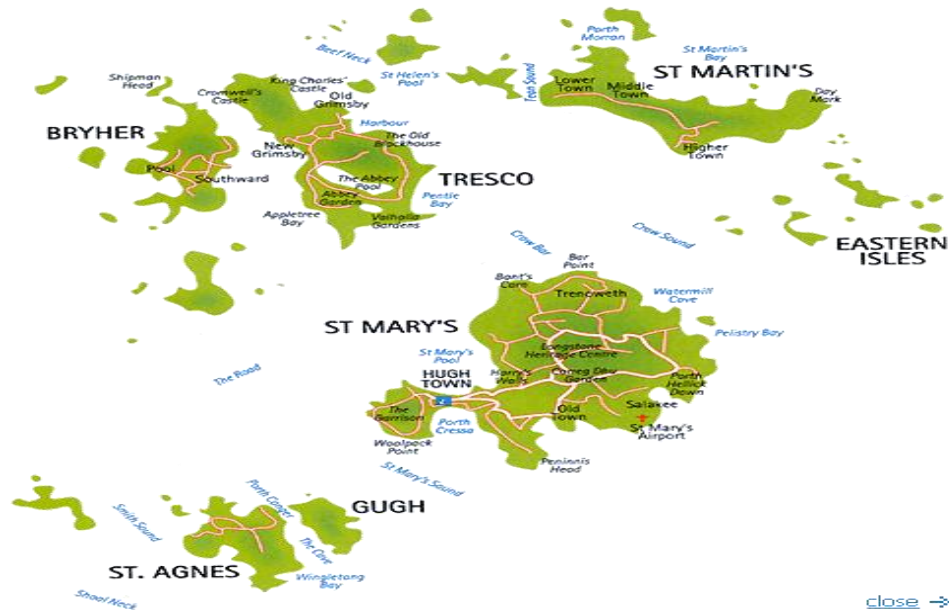
- Corporate Community Strategy
- Children and Young People's Plan
- Workforce Development Strategy
- Extended Services Strategy
- IAG Strategy
- Careers South West Business and Delivery Plan
- Multi Agency Strategy for Children and Young People with Learning Difficulties and Disabilities
- Cornwall and Isles of Scilly Strategy to Reduce Health Inequalities

## [National Cross-Government Policy](#)

The coalition Government published its Positive for Youth Document – a new approach to cross-government policy for young people aged 13-19 in December 2011. This is the first Coalition Government statement on young people and was written during the back drop of the 2011 summer riots when media representation of young people portrayed a nation of increasingly disengaged youth suggesting a rebellion due to the increase in University fees and rise in youth unemployment. In contrast the vision statement sees young people as a positive force and emphasises that Local Authorities must support all young people to realise their potential – by working together, celebrating successes, supporting those who are struggling, and giving every young person the opportunity to make their mark in society by making a difference in their local area and have the best possible start to adult life.

## The Local Context

The Islands of the Isles of Scilly and their relationship to the British Isles



The Council of the Isles of Scilly is a small unitary authority delivering a broad range of services to a unique island community located on the edge of the Atlantic, some 28 miles south-west of Lands End and home to a small but vibrant community of 2,100 residents of which around 360 are children and young people aged 0 – 18 years. Most people live on the main island of St Mary's but there are also significant communities on the off islands – Treasco, Bryher, St Agnes and St Martin's.

Transportation links involve a ferry service from Penzance which is limited to freight in the winter and a helicopter or plane which fly from five regional airports. Transport between the islands is via small, privately run boats which can be expensive for local residents.

Youth Services on the Isles of Scilly commence from when a young person enters year 7 (aged 11 years) up to 19 years, with many of the priorities focusing on milestones and key transitions for the 11 – 19 year old cohort and up to 25 where young people have learning difficulties or disabilities. The federated Five Islands School provides nursery, primary and secondary education on the islands. From year 7 the off island students board on St

Mary's during the week returning to their home island for the weekend. There is no provision for a sixth form thus post 16 further and higher education is accessed on the mainland.

The table below shows the population as 143 young people (from year 7 – year 13) living on Scilly or continuing their learning and employment on the mainland as at April 2012. The minute numbers illustrate that it is not necessarily meaningful to benchmark against national statistics and all statistics need careful interpretation.

Cohort Year Group	Male	Female	Total
Year 7	10	10	20
Year 8	6	13	19
Year 9	10	12	22
Year 10	9	12	21
Year 11	10	12	22
Year 12	8	10	18
Year 13	10	11	21

Freedom, fun, beautiful, amazing; all words used by children and young people when asked about what the Isles of Scilly means to them. There is no doubt that our youngsters are very aware and proud of where they live and as a community we too should be proud of them. Young people have a positive impact within the community be it environmental projects such as recycling or beach cleaning, formal and informal charitable activities or through the work they do volunteering at community groups, or as part of the Duke of Edinburgh's Award, their combined efforts help to make a real difference.

However geographical distance from the mainland and between the islands has a major impact on the provision of services on the islands. The wider Community Strategy priorities acknowledge the needs of young people who wish to return home to the islands post education – in recent years the population had remained relatively stable with the population ageing as the young leave the islands in pursuit of more economically and socially attractive lives on the mainland. However in the current difficult economic climate, young people have informed us that they are choosing to return to the Islands to access employment, as work is comparatively more available here than it is for 18-24 year olds on the mainland.

Of course there still remains a number of 'threats' which can impact on young people's lives on Scilly, most significantly they are;

- A decrease in population leading to depleting activities as they cease to be viable
- Situations where Individuals with key skills and expertise leave the islands
- The lack of anonymity causing fear of stigma

- The barriers to accessing central services
- Differences in definitions of vulnerable or harder to reach young people compared to national indicators
- The vulnerability of young people at certain key transitions i.e. off island transition at year 7 to boarding accommodation and transition to further education on the mainland at 16
- Lack of affordable housing
- Limited employment opportunities for career advancement
- Sustainability of funding to support Post 16 accommodation and travel to and from the Islands at the end of each term

Additionally, the small size of the young population means that cohorts of children, especially those with additional needs, will be very small. It would never be feasible to create specialist services on the islands for every kind of additional need that arises so the challenge is to be able to create bespoke packages of support for those who need it, working flexibly, creatively and seamlessly with all agencies. There are currently twenty 11 – 18 year olds who are registered as having additional support needs ranging from moderate to severe learning difficulties, behavioural conditions and disabilities. The Children's Social Care team lead on these services with the support of partner agencies who form the 'DANCES' group – (Disabilities, Additional Needs, CAF and Early Support Group).

The priorities in this Strategy are set as a result of embarking upon an extensive needs analysis through consultation. The table below sets out the range of consultations which have taken place during 2010 / 2011. The Youth Services priorities are dovetailed with those in the refreshed Children and Young People's Plan 2011-2015.



Consultation Exercise	Date of Consultation Exercise	Impact on Service Delivery
Childcare Sufficiency Audit	September 10	Statutory audit to consult with parents, providers, local employers, children and young people to measure the range of formal and informal childcare and positive activities available on Scilly. Surveys enabled members of the community to tell us their views and helped to identify and assess gaps in supply and demand of provision
Community wide consultation	June 2011	Council consultation across all departments including Children's Services
Have Your Say Day all student council members, year 6+	July 2011	'Have Your Say' consultation day at the Children's Centre with all student Council members and all Year 6 – Year 11 invited Data was used to contribute towards the priorities for the Children and Young People's Plan
Airspace Diary Room	July 2011	Big Brother style Inflatable diary room at the Children's Centre during 'Have Your Say Day'. Young people volunteered to be filmed discussing life on Scilly. Data was used to contribute toward the priorities for the Children and Young People's Plan. A DVD was produced
Young People's Health and Emotional Well being consultation (TAMHS)	January - July 2011	Series of workshops with Year 6 (rising year 7) around young people's emotional health and well being
Consultation with Year 12 Post 16 transition	August 2011	Annual informal meeting with the year 12's to reflect on their transitional year. Feedback recorded and is used to look at how IAG can be improved prior to and during transition
Consultation with Council Members and Student Council	January 2012	Student Councillors had the annual opportunity to feed back to decision makers, ask questions and make recommendations about service delivery and community facilities

On Scilly there is a commitment to providing high quality arrangements that provide identification and early intervention for all children and young people who need additional help. Agencies work to identify emerging difficulties in young people's lives and respond to them quickly and effectively so fewer young people experience serious problems.

Through local knowledge, evidence based data and consultation with our community, there are three key themes identified in the Children and Young People's Plan 2011-2015 which we will seek to address and develop over the life span of this Service Plan. These themes are;

- Emotional Health and Wellbeing
- Post 16 Transition
- Positive Activities for all

These themes underpin the Action Plan at the end of this document and shape the priorities for the 5 core functions. We are committed to delivering both universal and targeted services and acknowledge that for almost any activity involving children and young people to succeed, we have to give careful consideration to the following three core principles;

- Respect
- Inclusion and access to services
- Services designed around the needs of individuals

### **1. Integrated Youth Support Services Which Harness Health and Well Being**

Service provision has long since been characterised by close working relationships, an inevitable consequence of small teams living and working on the islands. Through building on integrated youth support practices we have;

- Formalised partnerships in order to provide seamless services
- Encouraged self referral and identification of need
- Provided positive, fun, accessible universal settings for young people
- Invested in all who work with young people including building capacity to work across professional boundaries
- Joined up services so that it is not just about providing a safety net for the vulnerable but about unlocking the potential of every child and young person

In order to achieve the aims of our priorities of this service plan agencies will work collaboratively to provide services and ensure we are making a difference to the lives of children, young people and their families.

### [Children's Social Care](#)

The Council of the Isles of Scilly Children's Social Care Service has become well established in the community and partner agencies are now fully aware of the service. Families requesting support evidences the significant preventative work taking place and illustrates that young people and their families are shaping their support packages as required.

National comparative data sets are particularly unhelpful in driving priorities for the Isles of Scilly, issues such as looked after children, adoptions or fostering being statistically insignificant within such a small cohort. However the quality of care for any individual is of greatest importance and the team undertakes a child centered multi agency approach and work closely with the Youth Service to promote any positive opportunities to the benefit of their clients.

### [Youth Hub](#)

The Council's Youth Hub strives to reduce the barriers to support and holds a quality assured 'EEFO' Kite Mark. This will be assessed annually by Cornwall's Health Promotion Service (HPS) and assures that Youth Workers will offer support to access specific services appropriately and confidentially.

### [Multi-Agency Practitioner Groups](#)

The Isles of Scilly have established a number of multi-agency forums who work collaboratively to provide various elements of early intervention and preventative support. These are;

- IYSS Multi Agency Group
- The Post 16 Transition 'Moving On Team'
- Keeping Children Safe Practitioner Group
- Disabled, Additional Needs CAF and Early Support (DANCES) Group
- Domestic Abuse Forum

The majority of members of these multi agency groups have received training in CAF and the role of the Lead Professional and work hard to uphold the fundamental message that young people and their parents / carers should not feel stigmatised by asking for help or early intervention.

### [External Agencies](#)

The Youth Service work collaboratively with EEFO accredited external agencies such as;

- Brook Cornwall
- Cornwall's Alcohol and Drug Agency ADDACTION (formerly CADA) for young people - YZUP
- Mainland specialist organisations offering specific expertise through positive activities
- Learning South West Regional Youth Work Unit
- CAMHS

Services from these agencies are frequently linked in with the School where possible, allowing young people to access services and IAG both educationally and recreationally.

### [Support for Young People offending or at risk of offending](#)

The Youth Offending Service (YOS) is engaged in local targeted youth support on Scilly and works as and when required on cases for those who are at risk of offending or who are either entering or exiting the criminal justice system. Those working to improve community safety play a very important role in IYSS – these are often the professionals able to identify young people who are risk at an early age. Devon and Cornwall Constabulary are an important agency in the delivery of services to children and young people on Scilly. The Devon and Cornwall Constabulary Youth Strategy sets out the Police commitment to working with and safeguarding the young population on Scilly – not only as enforcers but also by fostering positive relationships with children from a young age. This happens through the variety of positive activities delivered by the police from primary age through to KS4.

### [The Five Islands School](#)

The Five Islands School is situated at the new St Mary's based site which provides integrated primary and secondary facilities that offer state of the art learning facilities from the age of 3 – 16 years. The Five Islands School off island primary bases are also highly regarded by the local community. The new school build and its accompanying sports facility has offered a wealth of new opportunity for the community. Youth support services are regularly delivered in partnership with the school which range from the Careers Fayre, KS4 Safety Day, consultation meetings and Youth Parliament to name just a few events on the Youth Service / School Calendar. The School now employs a permanent school nurse who is available for support with any health, emotional and well being concerns from young people. The Mundesley Boarding House Parents work regularly with Children's Services in the planning of activities and sharing of information.

### [Adult and Community Learning](#)

Currently located on site at the Children's Centre the Adult and Community Learning Service work closely with Children's Services to offer guidance and support should a Post 16 student 'drop out' of college or indicate that they wish to pursue learning and development options on Scilly. Apprenticeships or vocational training can be offered as an alternative to the mainland.

## [Working with Parents](#)

Our service operates an open door policy for parents and carers and we view parents and carers as ‘partners’ in ensuring the best outcomes for children and young people. The Youth Hub supports the Parent Carer group which are a group of parents of children and young people whose needs mean they access additional support services. ‘The Clan’ group of older children and siblings meet half termly at the Youth Hub and participate in activities which they may not normally access without the additional support they receive at the setting.

## [2. Positive Activities for Young People](#)

Working in partnership with the above agencies the Youth Service will continue to plan and deliver our programme of activities in consultation with young people. In support of these initiatives, Children’s Services work closely with members of the Council’s Community Services who have a remit for supporting healthy communities including providing excellent sporting opportunities for young people and will continue to maintain good partnership working practices.

## [Positive Activities Funding](#)

The Council’s main stream of funding to implement positive activities is allocated from the Isles of Scilly Education Grant and the Early Intervention Grant. Investments into Positive Activities are committed up until March 2013 and will include;

- Financial support for voluntary organisations to sustain and thrive
- Funding the provision of creative and innovative Youth Hub activities for young people all year round
- Funding support for volunteering opportunities
- Funding access for off island young people to participate in activities during holidays and the weekends

## [Youth Hub](#)

The Council’s central provider of its offer of Positive Activities is the Youth Hub. The vision of the Hub and its policies are to;

- Provide a varied menu of high quality activities which cover all 3 core principles set out in the IOS Children and Young People’s Plan
- Work jointly with young people in the planning of these activities and events and evaluate regularly
- Ensure that activities are vibrant and innovative and meet the interests and abilities of all young people on Scilly
- Provide accredited activities where qualifications are gained
- Offer an inclusive service which serves all young people on Scilly
- Promote an environment that celebrates equality and diversity and upholds a zero tolerance policy to bullying which all staff and young people comply to

- Uphold the UN Convention on the Rights of the Child
- Ensure that the Youth Hub is a safe, friendly and comfortable place for young people
- Support young people to take up opportunities which they may not access in isolation
- Employ and retain qualified staff who are committed to the best outcomes for young people
- Work in partnership with the wealth of voluntary clubs and organisations on Scilly and strengthen links with providers of positive activities from the mainland
- Communicate information on activities available to all young people and their parents / carers through a variety of ICT and media

### [Extended Services](#)

Extended Services continues to provide the core offer for children, young people and their families, specifically;

- Access to wrap around childcare when needed
- Swift and easy referral to specialist services
- A varied menu of activities including study support
- Parenting support including transition, information, family learning and facilitator led parenting support programmes
- Community access to facilities

This may be through on site provision at the Children’s Centre, Youth Hub, the School, or by sign posting to local provision which takes place off site.

### [Support for Voluntary Organisations](#)

Scilly is extremely fortunate that there is a wealth of superb voluntary organisations providing activities for young people. The Council is committed in its support for these organisations and values the excellent services they provide. Young people are actively encouraged to join groups with predominately adult membership who are willing to form and deliver junior groups enabling young people to access opportunities to represent and promote the islands admirably. It is in the interests of clubs and organisations on Scilly to attract junior membership where appropriate to sustain for generations and harness Scilly’s vibrant and active community.

### [Opportunities for Volunteering](#)

Using the Positive Activities fund and the Extended Services Budget, the Council have provided funding to support the facilitation of a variety of accredited schemes affiliated with the Five Islands School including the Leading Edge and the Duke of Edinburgh Award Schemes. Many young people regularly volunteer in an informal capacity, especially at their after school clubs as instructors and role models for younger children. National awards such as ‘V’ are not the most appropriate accreditation scheme for Scilly as they are specific to the 16+ cohort. At the time of publication the Isles of Scilly have not been involved in the roll out of the National Citizen Service. 30,000 places were made available for UK 16 year olds in 2012 with an increase to 90,000 by 2014. It is anticipated that further information on allocation of places for the Isles of Scilly will be made available during the life span of this plan.

By utilising our resources creatively the Youth Service will actively;

- Encourage young people to give up some of their spare time to get involved in something which will help others
- Encourage local groups to provide volunteering opportunities for young people
- Provide information about these opportunities and the necessary help and support to get involved
- Support young people who volunteer to organise fundraising events or campaign events in their community
- Sign post to information on volunteering opportunities in other parts of the UK, Europe and the rest of the world
- Celebrate the achievements and outcomes from young people volunteering

### **3. Empowering Young People's Participation and Engagement**

The Council of the Isles of Scilly places high esteem and importance in listening to the voices of children and young people and ensuring that they are involved in the design and delivery of services which affect them as individuals and as a community. Through integrated partnerships the Council will continue to deliver a variety of functions to support participation and engagement.

The Coalition Government has devolved greater power and freedom to councils to empower local people to make decisions about local issues and that young people have a vital role to play at every stage of the process to inform decisions about the local offer of services for them. Although at the time of publication, the Youth Service has not yet established its 'Youth Proofing' commitment and will work towards achieving this. We are however actively working closely with established young people's forums by;

- Meeting regularly with the School Student Council who are an enthusiastic committee of young people dedicated to representing their peers
- Organising at least one meeting per year with Senior Elected Members, Student Council Members and Youth MPs
- Utilising the skills of the Careers SW PA for additional youth engagement training and activities
- Sustaining Isles of Scilly representation in the UK Youth Parliament by an annually elected Member of Youth Parliament (MYP) and Deputy (DMYP)
- Maintaining the membership of the Isles of Scilly Youth Parliament within the South West network supported by the SW Learning Regional Youth Work Unit and the National Body - The British Youth Council
- Enabling and supporting the MYP and DMYP in their endeavours both locally and their contribution to the UKYP regional and national manifestos
- Refreshing training for IYSS providers in implementing creative methods for consulting with and allowing all children and young people to articulate their views - particularly LDD and those classed as 'hard to reach'
- Continuing to monitor and self assess how the Council support and promote the active involvement of children and young people

#### 4. Information Advice and Guidance (IAG)

The Council commissions Careers South West Ltd as the main provider for delivering targeted IAG services through the Peninsular Contract for Transition Support for Young People to Education, Employment and Training. This has provided a number of positive benefits for integrated working:

- The provision of a framework for planning, managing and reviewing IAG services in a co-ordinated way
- The provision of accurate up to date and objective information about personal and lifestyle issues, learning and career opportunities, progression routes, where to find help and advice and how to access it
- The provision of advice through activities that help young people to gather, understand and interpret information and apply it to their own situation
- Support for the decisions made by young people to allow smooth transitions especially from pre to post 16 provision
- Reducing the likelihood of young people becoming 'Not in Education Employment or Training' (NEET) or disengagement
- Following up all Isles of Scilly young people until their 20<sup>th</sup> birthday to ensure they are in education, employment or training

#### The September Guarantee

The September Guarantee is part of the Government's commitment to providing appropriate opportunities for young people aged 16 or 17. The offer of a place in learning has to be made by end of September in the year after leaving year 11 or 12. This will form part of the plan for Raising the Participation Age up to 18 years and the Council will continue to measure the outcomes from the Guarantee annually with Careers South West.

#### Young People With Additional Support Needs

Young people who are school action, school action plus or statemented receive additional IAG to support the transition especially where this transition will include transfer to Adult Services. The islands are developing the use of personal centred planning as part of transition plan and section 139A of the Children's and learning Act 2008. The Careers South West Personal Adviser will continue to ensure that the information in the section 139a is received by the post 16 education provider and will follow this up to check the requirements of the plan have been implemented. The person centred planning allows parents / carers and young people to help in shaping the package of support at transition.

IAG for the marginalised and disadvantaged young people is tailored to individual requirement. The follow up and tracking of needs helps to prevent these young people becoming NEET or disengaged. Vulnerable groups are followed up more frequently especially those who are care leavers, working with YOS, BME, Migrant workers children, young carers, teenage parents, and LDD. The delivery of IAG will actively promote equality of opportunity and celebrates diversity and challenges stereotypes to support those least likely to continue in learning.



## Transition at 16

Young people on Scilly receive IAG as part of their careers education in school from year 9 onwards. This informs their planning for post 16 progression although the Council recognises that parents and carers will be a prime influence on the decisions made and also need to be informed and empowered. Young people are supported in transition and on the mainland post 16 by the Council's Youth Support Officer regarding accommodation issues and safeguarding and those around learning and work from a Careers South West Personal Adviser. IAG commences from Year 9. Consultation with students who have been through the FE process informs us that parents need information and guidance much earlier on than year 11 regarding the cost of their child's FE/HE and we are currently working to address this.

In partnership with the School and other agencies, the Council have an established 'Moving On' multi agency team who provide a variety of functions to prepare for transition at 16 including;

- To continue to offer comprehensive and impartial IAG to students before, during and after transition
- Supporting Year 10 Work Experience opportunities
- To continue to support and monitor students while on the mainland through the work of the Youth Support Officer
- To support the transition arrangements of young people with additional needs and disabilities
- Updating and despatching the 'Moving on' booklet which gives preparatory help with transition to the mainland
- Delivering a multi-agency Key Stage 4 Safety Day in the spring term
- Hosting an annual careers convention with partner organisations and establishments
- Providing financial support for accessing open days at prospective schools and colleges on the mainland
- Accompanying Year 9 to visit Further Education Settings in the Summer Term so they experience a FE setting early, prior to making choices
- Sign posting young people to EEFO accredited services
- Encouraging independence on mainland trips so young people can fully appreciate navigating towns and cities

## 5. Youth Workforce Development

Due to the small cohort of young people on Scilly, Youth Work for most is not a full time post. Issues of capacity can be an issue on Scilly and for many their youth post is a second or third job. However this should not diminish the fact that Youth Workers play a significant role in the lives of many of our young people, whether as a paid professional or volunteer. By investing training and resources into these individuals the Council aims to retain and value a committed and skilled Youth Workforce for generations to come.

In order for the Youth Workforce to be able to meet the priorities of this Plan, it is essential that;

- Service managers are appropriately trained for the leadership roles that they undertake
- All those working with young people either employed or as volunteers are correctly vetted and aware of the appropriate safeguards and procedures needed to protect young people
- There is an effective induction programme for those working with young people
- Those working with young people are trained to the appropriate level in the common core of knowledge and understanding for working with children and young people

In addition it is important that there is specific training available for those supporting youth activities in the voluntary sector or employed by the Council or agencies in specialist areas such as sporting, adventure or cultural activities.

Many of these needs are common to others working with children and young people from Scilly and it is vital that those engaged in youth work see themselves as part of the wider children's workforce.

The Council's Children's Workforce Strategy sets out to ensure that appropriate safeguarding training, leadership training, induction and promotion of the common core skills and knowledge is accessed by all those working with children and young people. Through the EIG for Positive Activities the Council supports the voluntary sector in funding the more specific skills to enhance and update their qualifications required to teach children and young people.

### Performance Management

The reviews on progress (table only) against performance measures will be reported to the Children's Services Commissioning and Performance Manager.

### Review

The Annual Refresh of this plan will be reviewed in March 2013.

### Equality and Diversity:

If you require this document in an alternative language, in larger text, Braille, easy read or in an audio format, please contact the Community Relations Officer on [diversity@scilly.gov.uk](mailto:diversity@scilly.gov.uk) or telephone 01720 424046.

For further information on this service please contact the Childcare and Youth Officer on 01720 423680 or e-mail [childrensservices@scilly.gov.uk](mailto:childrensservices@scilly.gov.uk) alternatively visit the Council's website [www.scilly.gov.uk](http://www.scilly.gov.uk)

### Our Key IYSS Key Stake Holders

Primary Support Providers– operational /direct work with young people	Secondary Support Providers – Strategic functions for young people
Council of the isles of Scilly Five Islands School Careers SW Local Voluntary and PVI providers Police, Community Safety and YOS YZUP Brook Barnados Regional Youth Work Unit / UKYP FE establishments CAMHS	Job Centre Plus Family and Information Services Health Promotion Services National Apprenticeship Services Education Funding Agency Primary Care Trust Local Safeguarding Children's Board (LSCB) North Somerset CC Cornwall CC

Appendix 1: Integrated Youth Support Services (IYSS) Action Plan

Owner	Objective	Action	Performance Measure	Timescale	Resource
Careers SW C/YO YSO ES&CCM	To provide good quality IAG and preparatory provision for every student prior to and during transition	<p>Careers SW PA will work with each student from year 9 to produce a tailored package of support and guidance</p> <p>Sustain universal IAG activities already provided by the Youth Service with input from the Youth Support Officer</p> <p>Host an annual consultation with students at the end of year 12</p> <p>Sustain events such as Year 9 College visits and year 11 funding to visit FE settings</p> <p>Facilitate KS4 Safety Day held in partnership with agencies and the School</p> <p>Organise and facilitate Careers Convention in partnership with the school careers librarian</p> <p>Have up to date IAG materials available in youth settings which are easily accessed</p> <p>Ensure there is 1 to 1 support available for all students throughout their FE</p>	<p>All young people receive timely appropriate IAG</p> <p>Young people experience a safe and happy transition and thrive post 16</p> <p>Attendance of at least 30% of cohort to effectively evaluate into how post 16 guidance is delivered</p> <p>Young people have visited settings first hand and are better equipped to make informed choices about their FE</p> <p>Year 9 – 11 pupils access IAG from a range of youth support agencies to prepare for mainland life</p> <p>Year 9 – 11 pupils and their parents access this event</p> <p>Ensure Moving On Booklet is updated</p> <p>Sustain Youth Support Officer post</p>	<p>Review March 2012</p> <p>August 2012</p> <p>July 2012</p> <p>February 2012</p> <p>September 2012</p> <p>July 2012</p> <p>Review March 2013</p>	EIG Post 16 Transition

CSCM YSO	To ensure students with additional needs and disabilities are offered a comprehensive programme of support before, during and after they leave Scilly	To work in partnership to develop transition plans for every student with additional needs/disabilities  To work in partnership to identify extra funding and provide qualifying families with additional resources for travel and accommodation before and during transition	Young people with disabilities / ASN are supported in finding a pathway which suits their individual abilities and needs  Young people and their parents feel confident and well prepared prior to their move  Evaluations from Parents and young people	Review March 2013  September 2012  Review March 2013	EIG Post 16 Transition
CCSM		Produce the Transitions Protocol	Document completed	December 2012	
CPM YSO VLC Careers SW PA	Work with partners to develop local post 16 pathways for students who either return or don't leave scilly	YSO to deep in contact with all students to support and monitor individual transitions  Ensure systems to identify students who drop out are robust and information is cascaded to other professionals where appropriate  Ensure multi agency arrangements are in place to identify vulnerable students at an early stage	Young people and their families are supported  Young Person does not remain NEET  Information has been shared appropriately between agencies to ensure the best outcome for the individual and their family	Review March 2013	ACL Vocational Learning
CPM C&YO YSO	Ensure adequate levels of funding are in place to support every post 16 student	Ensure parents are aware of what financial support is available depending on the choices they make  Consider how best to make families aware of the cost of supporting a child in further and higher education	Letters about financial support for college visits sent to year 11 parents  Information available for Year 9 Parents at Careers Convention	October 2012  September 2012	EIG Post 16 Transition  Education Funding Agency Post 16 Grant

C&YO	Sustain Multi Agency Integrated Youth Support Services monitoring group	<p>Consider representation to reflect the remit of the group</p> <p>Amend Terms of Reference accordingly and refresh plan</p>	<p>Group of multi agency partners meet at least 3 times a year</p> <p>Group monitor that actions are met timely</p>	Review March 2013	EIG Positive Activities
C&YO ES&CCM	Promote healthy lifestyles through collaborative working	<p>Work in partnership with agencies to educate and support young people around sexual health and relationships, alcohol and substance misuse both in Youth Hub and School settings</p> <p>Ensure young people have access to up to date information materials which can be accessed confidentially and discreetly in youth settings</p> <p>Uphold the Youth Service confidentiality policy so young people feel secure accessing services</p> <p>Provide and promote age appropriate positive activities that engage our community in healthy pursuits</p> <p>Investigate feasibility of SUST training In alcohol education</p>	<p>At least one visit from Brook per year</p> <p>At least one workshop at Youth Hub per year on alcohol and substance misuse</p> <p>annual KS4 Safety Day takes place in Spring Term</p> <p>Annual accredited kitemark from EEFO at the Cornwall HPS All staff have signed the agreement policy</p> <p>Low teenage pregnancy, teenage obesity and health referrals</p> <p>Training provider identified and training accessed by Youth Workers</p>	<p>July 2012</p> <p>March 2013</p> <p>February 2013</p> <p>May 2012</p> <p>Review March 2013</p> <p>December 2012</p>	EIG Positive Activities

C&YO ESCCM	Sustain the provision of high quality, inclusive, & accessible positive activities	A varied menu of positive activities are available throughout the year planned as a result of consultation with young people and their families	Young people report satisfaction with the provision available through evaluation and consultation	Review March 2013	EIG Positive Activities	
			Registers retained of numbers attending			
			At least one activity organised or supported by Children's Services per holiday			
		Harness community spirit by organising activities which are inter generational	At least one inter generational activity takes place each year		Extended Services Grant	
		To support opportunities that allow young people to participate in mainland trips with the aim of developing confidence prior to their post 16 transition	At least one Youth Hub trip organised. Funding granted to voluntary club ventures to the mainland	February 2012		
		Work with the Parent Carer Group to provide positive activities for 'The Clan'	The Clan Group meet at least once per term	Review March 2013	Positive Activities	
		Sustain support for the Private, Voluntary and Independent Providers of Positive Activities on Scilly	Clubs and organisations feel valued and confident to approach the service for funding and support	Evaluate February 2012		
	Sustain off island access funding for young people at holiday times to promote inclusion all year round	Off island young people access and participate in activities at weekends and holidays	Review September 2012	Positive Access Off Island Access Fund		

<p>CSCM C&amp;YO</p>	<p>Shape services for those identified as vulnerable or harder to reach</p>	<p>Share data to identify young people and plan services which meet their needs where possible</p> <p>Work in partnership to sustain a qualified and skilled Inclusion Workforce who can support young people to access services</p>	<p>Recorded number of identified young people accessing services</p> <p>Retention of Inclusion Workforce</p>	<p>Review March 2013</p>	<p>EIG Positive Activities</p>
<p>C&amp;YO</p>	<p>Support and encourage volunteering opportunities for young people in the community</p>	<p>Conduct audit of volunteering opportunities already in existence for young people on Scilly and the national volunteering infrastructure</p> <p>Consult with young people on how new volunteering opportunities could be made available</p> <p>Celebrate successes and achievements of children, young people, their clubs and organisations</p> <p>Look into plans for the National Citizen Service for the Isles of Scilly</p>	<p>Document produced</p> <p>Consultation to have taken place</p> <p>Production and circulation of the Western Rocks Children's Services Newsletter termly</p> <p>Positive local media coverage</p> <p>Discussion with colleagues at the Regional Youth Work Unit</p>	<p>July 2012</p> <p>November 2012</p> <p>Review March 2013</p> <p>July 2012</p>	<p>EIG Positive Activities</p>



C&YO	Support opportunities for young people to participate in decision making at regional, national and international level	<p>Sustain IOS representation in UK Youth Parliament</p> <p>Ensure capacity of staff to support the UKYP agenda locally and on the mainland</p> <p>At least one meeting per year between young people and senior Council Members</p> <p>Refresh Self Assessment Tool on consulting with young people</p> <p>Establish plan to meet Government agenda on 'Youth Proofing'</p>	<p>Election to have taken place for at least one yearly term of office</p> <p>D/MYP Attendance at regional meetings, annual sitting and events when practical</p> <p>Annual meeting has taken place</p> <p>Self Assessment reviewed and refreshed</p> <p>Action Plan produced</p>	<p>February 2013</p> <p>Review March 2013</p> <p>January 2013</p> <p>September 2012</p> <p>December 2012</p>	EIG Youth Participation
Director	Ensure that information sharing underpins multi agency work	<p>Sustain the existing multi agency practitioner groups</p> <p>Ensure all staff access appropriate child protection training including information sharing</p>	<p>At least 3 meetings held per year for each practitioner group</p> <p>Annual safeguarding and information sharing training to be delivered and attended by youth workforce</p>	<p>Review March 2013</p> <p>September 2013</p>	EIG Workforce Development
C&PM	Retain a committed skilled youth workforce	<p>Continue to invest in our voluntary and statutory workforce to enable the delivery of high quality services in an integrated and effective manner</p> <p>Ensure Workforce Development strategy is still fit for purpose</p>	<p>Staff are ambitious and motivated: retention of staff is good</p> <p>Strategy is refreshed</p>	<p>Review March 2013</p> <p>December 2012</p>	EIG Workforce Development
C&YO		<p>Enable networking opportunities for youth staff to share good practice</p> <p>Ensure regular supervision meetings</p>	<p>Team meeting to have taken place.</p> <p>Termly supervision with part time staff to have taken place</p>	<p>July 2012</p> <p>Review March 2013</p>	<p>Training</p> <p>Positive Activities</p>

[Appendix 2: Revisions](#)

DATE	AMENDMENT	BY	VERSION
18.5.12	Refresh of priorities	Childcare & Youth Officer	2

[Appendix 3: Glossary of Terms](#)

Acronym	Description	Acronym	Description
ACL	Adult and Community Learning	EIG	Early Intervention Grant
ASN	Additional Support Needs	ES&CCM	Extended Services & Children's Centre Manager
BME	Black, Minority & Ethnic	FE	Further Education
C&YO	Childcare & Youth Officer	HE	Higher Education
CAF	Common Assessment Framework	HPS	Health Promotion Service
CAMHS	Child & Adolescent Mental Health Service	IAG	Information Advice & Guidance
CIN	Child in Need	IYSS	Integrated Youth Support Services
CPM	Commissioning and Performance Manager	LDD	Learning Difficulties and Disabilities
CRB	Criminal Records Bureau	LSCB	Local Safeguarding Children's Board
CSCM	Children's Social Care Manager	MYP	Member of Youth Parliament
CSW	Careers South West	NCS	National Citizen Service
CWDC	Children's Workforce Development Council	NEET	Not in Education, Employment or Training
CYP Com	Children & Young People Committee	PSHE	Personal, Social & Health Education
CYPP	Children & Young People's Plan	PVI Sector	Private, Voluntary & Independent Sector
DANCES	Disabilities, Additional Needs, CAF and Early Support	SEN	Special Educational Needs
DCS	Director of Children's Services	SRE	Sex and Relationships Education
		TAC	Team Around the Child
DFE	Department for Education	TAMHS	Targeted Mental Health in Schools
DMYP	Deputy Member of Youth Parliament	UKYP	UK Youth Parliament
EFA	Education Funding Agency	VLC	Vocational Learning coordinator
		YOS	Youth Offending Service
		YSO	Youth Support Officer