



ISLES OF SCILLY

# WATER & SEWERAGE FORUM

7<sup>TH</sup> OCTOBER 2015

# BACKGROUND

- **2011** – Defra identify that legislation relating to the Isles of Scilly does not meet requirements of EU Directives.
- **2012** – Defra undertake a Water Interests Survey. £1m funding is granted to CloS for initial improvements.
- **2013** – Local Enterprise Partnership bids for £15m funding for water, wastewater and sewerage investments on the IoS; Defra produces a draft Economic Impact Assessment that estimates that the costs to the islands will be significantly less than the LEP's estimate.
- **Feb 2014** – Defra produces a draft consultation document and impact assessment. CloS responds with significant concerns that the impact assessment is not sufficiently robust.
- **June 2014** – Defra Ministers sign-off consultation documents with no changes and circulate to Cabinet Office for cross departmental sign off.
- **November 2014** – Consultation announced - commences on 21<sup>st</sup> November and ends 12<sup>th</sup> February 2015.
- **February 2015** – Defra, EA and DWI visit the islands to undertake consultation meetings
- **March 2015** – Working Group formed

# Legislative & Regulatory Context

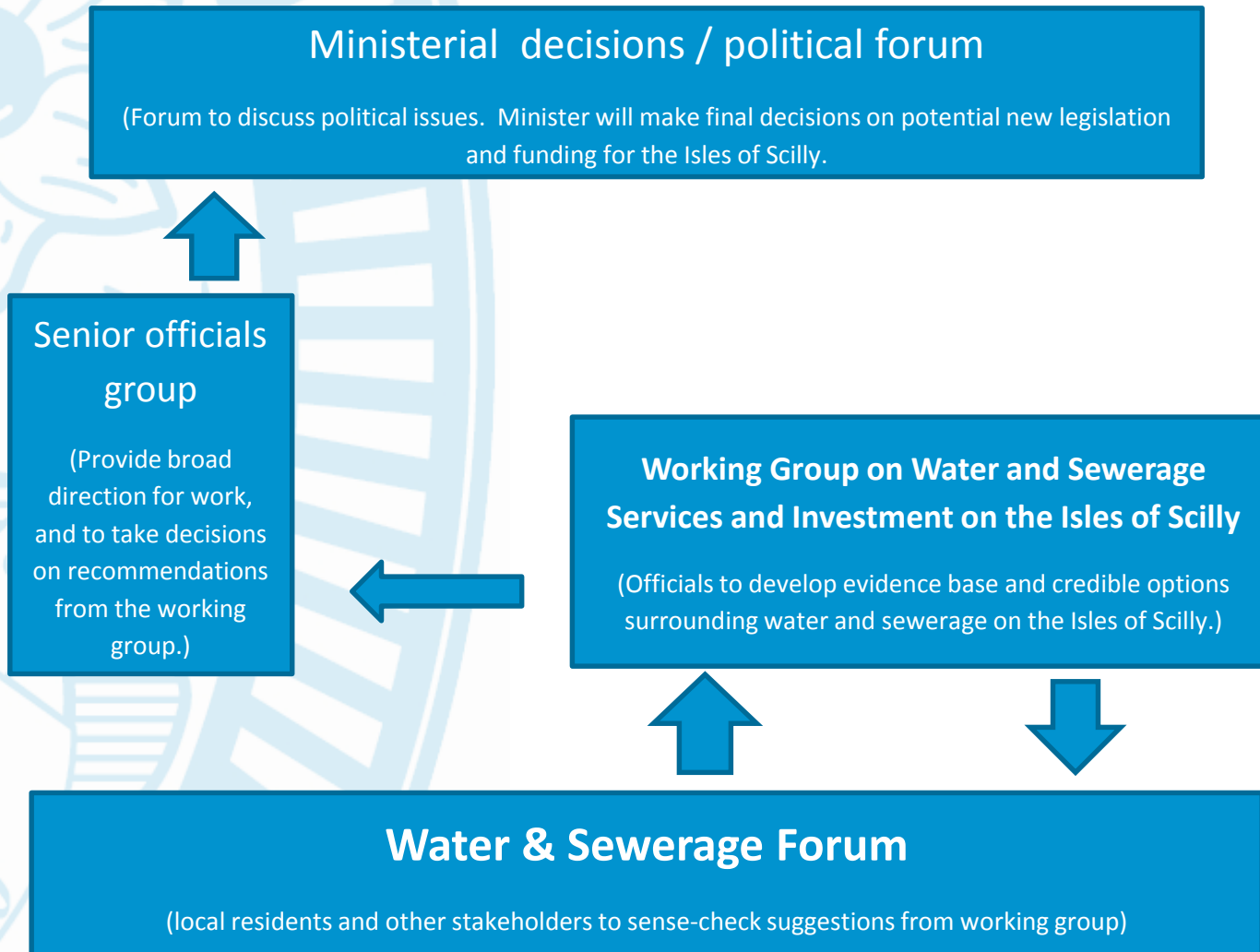
## ❑ **Water & sewerage law**

Laws that protect public and environmental health within England (as a result of EU Directives) have not been fully applied to the islands. This means that the UK are not fully complying with EU Directives and the Regulators - Drinking Water Inspectorate (DWI) and Environment Agency (EA) - have no enforcement powers in relation to drinking water and the disposal of sewerage on the islands.

## ❑ **Legislation**

The outcome of the consultation will be to see the relevant Acts, or an equivalent Order, applied to the Isles of Scilly. DWI and the EA will be given regulatory and enforcement powers on the islands, equivalent to the mainland. The Working Group and Water & Sewerage Forum will be involved in the decision making process.

# How will decisions be made?



# Key Issues for Islands

- The Council and Community has **limited assets and resources** required to raise funds and ensure technical expertise to deliver ALL required services. Eg. Without an alternative funding source, the financial burden on the Council would have to be recovered through fees & charges from only 900 customers.
- Potentially, there is a conflict between role of Council as **regulator and supplier**. (We are the only Council that still provides drinking water.)
- **Strain on Auxiliary Infrastructure and Services** – Limited capacity of power supply to the islands to support the required improvements to meet regulations eg new desalination plants; Water Sampling – the logistics of getting samples to an accredited laboratory (in Exeter) within necessary timeframes is very expensive.
- Are there **alternative service delivery models?** – eg privatisation or another organisation to deliver water and sewerage services.

# AGENDA

## **1. Introductions**

Working Group representatives and Forum Members to give brief introduction of themselves and/or organisation they represent and role on the Working Group or Forum.

## **2. Update from each agency/organisation**

Brief update from each organisation on progress to date, key issues and any actions.

## **3. Review of Terms of Reference for group**

## **4. Q&A**

# 1. Introductions



# 2. Working Group

- ❑ Department for the Environment, Food and Rural Affairs (Defra)
- ❑ Environment Agency (EA)
- ❑ Drinking Water Inspectorate (DWI)
- ❑ OFWAT
- ❑ Council of the Isles of Scilly
- ❑ Duchy of Cornwall
- ❑ Tresco Estate





# 3. Forum - Terms of Reference



# 4. Q&A

