

Commercial Unit Available

UNIT 2, Gleaner House, Porthcressa, St. Mary's



Annual Lease Agreement
Monthly Rent £250
Annual Service Charge Currently £120

AVAILABLE FROM 26th APRIL 2017 or EARLIER PENDING AGREEMENT WITH EXISTING TENANT

Unit measures approximately 30m², shared WC and kitchenette.

Under the terms of the lease, permitted use means any use within Use Class B1 of the Town and Country Planning (Use Classes) Order 1987 (as amended), this is as follows:

B1 Business - Offices (other than those that fall within A2), research and development of products and processes, light industry appropriate in a residential area.

A2 means Financial and professional services - Financial services such as banks and building societies, professional services (other than health and medical services) including estate and employment agencies and betting offices.

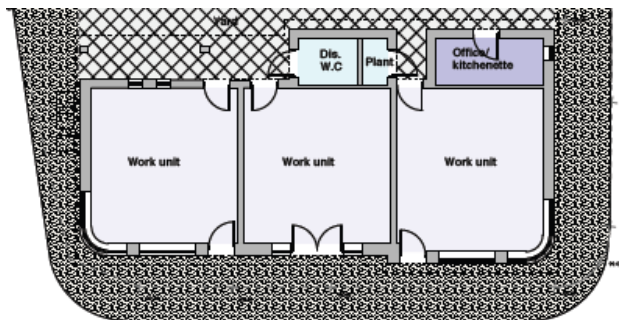
To arrange a viewing or to express an interest contact;

Traci Badcock

01720 620100 / TBadcock@scilly.gov.uk

PEC / Commercial Property Assistant

Porthmellon Enterprise Centre, St. Mary's, Isles of Scilly, TR21 0LW



EUROPEAN UNION
Investing in Your Future
European Regional
Development Fund 2007-13



Council of the
ISLES OF SCILLY