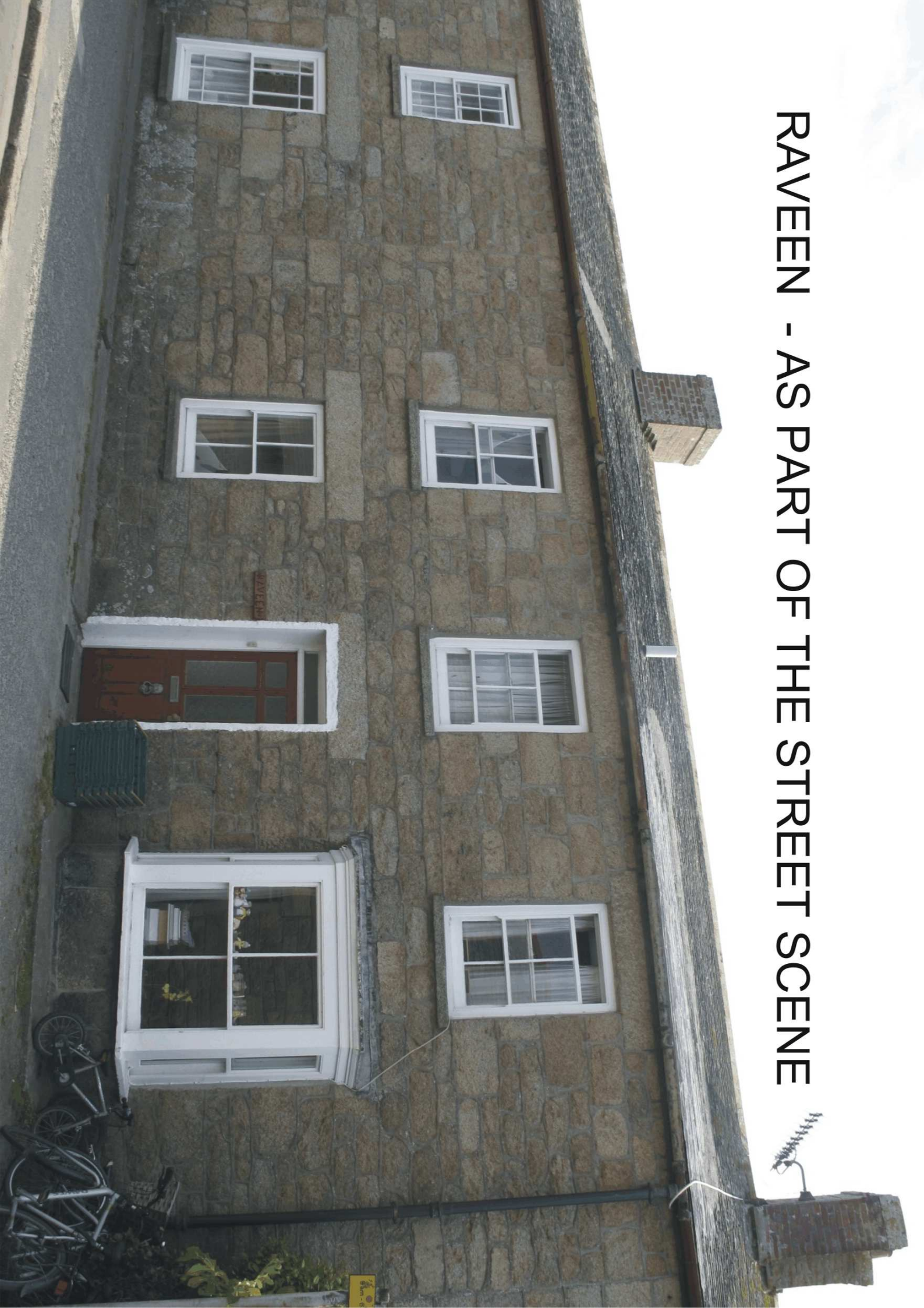


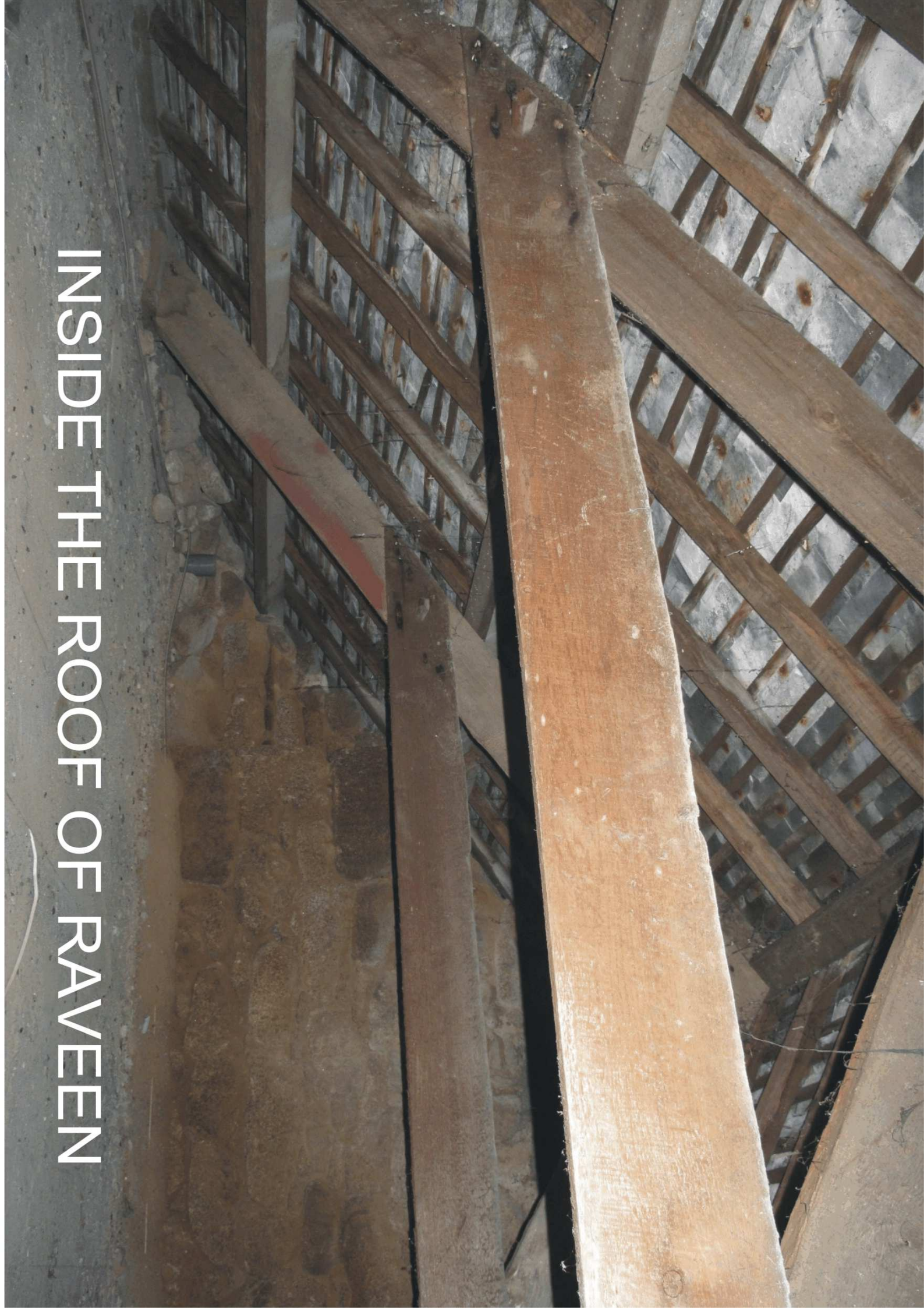
A close-up photograph of a wooden roof structure. The image shows several horizontal wooden planks of varying shades of brown, some with visible grain and knots. The background is a light-colored, textured surface, possibly plaster or concrete, with some dark spots and cracks. The text "CLOSE UP OF THE ROOF" is overlaid in white, bold, sans-serif font across the middle of the image.

CLOSE UP OF THE ROOF

RAVEEN - AS PART OF THE STREET SCENE



INSIDE THE ROOF OF RAVEEN



**REAR VIEW OF HAMEWITH
(Listed 1959)**

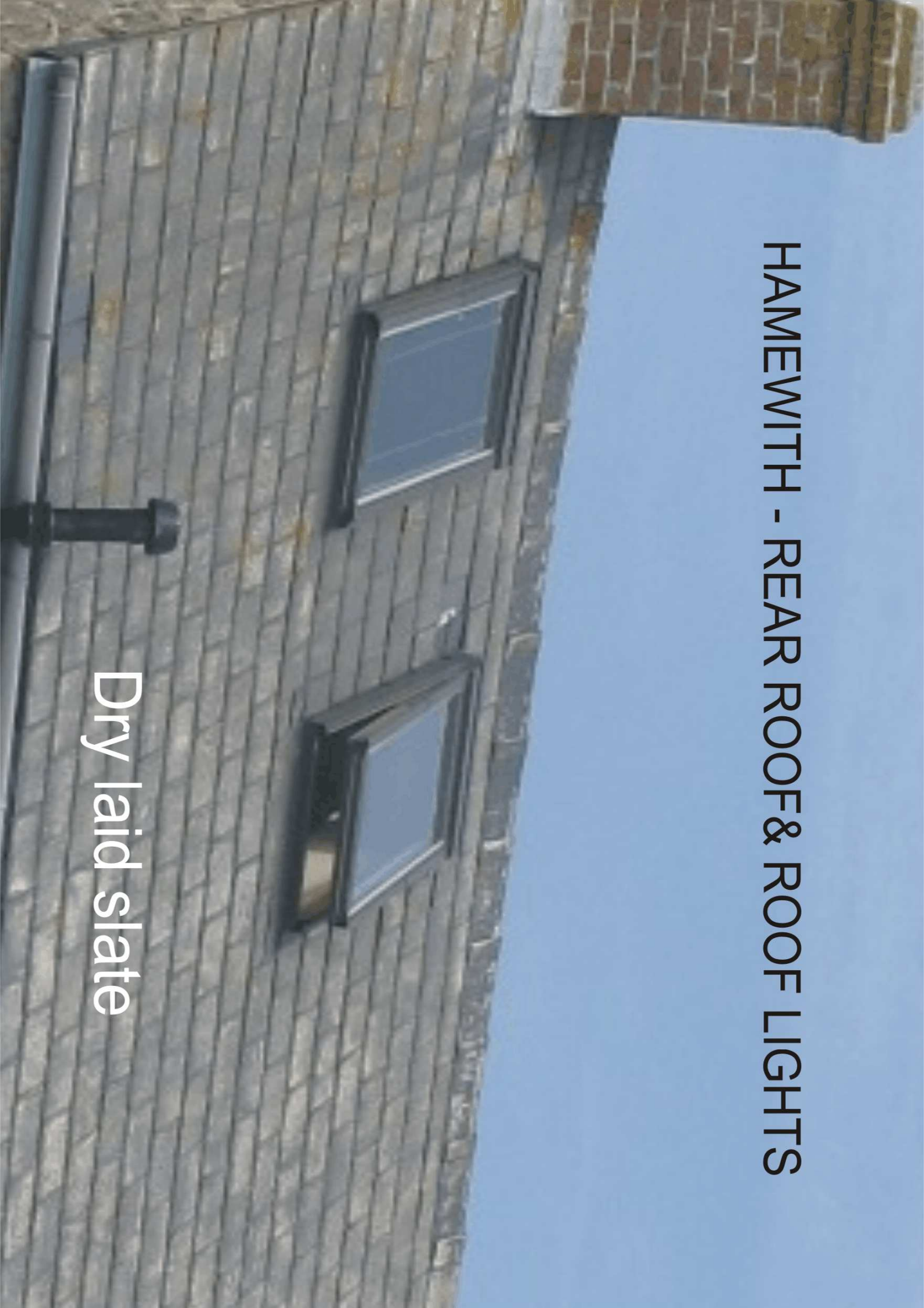
'Hamewith'

Dry laid slate



HAMEWITHH - REAR ROOF& ROOF LIGHTS

Dry laid slate



REAR VIEW OF RAVEEN

'Raveen'

'Thurleigh'

Concrete tiles

Dry laid slate on this elevation



Town Hall (also with dry laid slate)

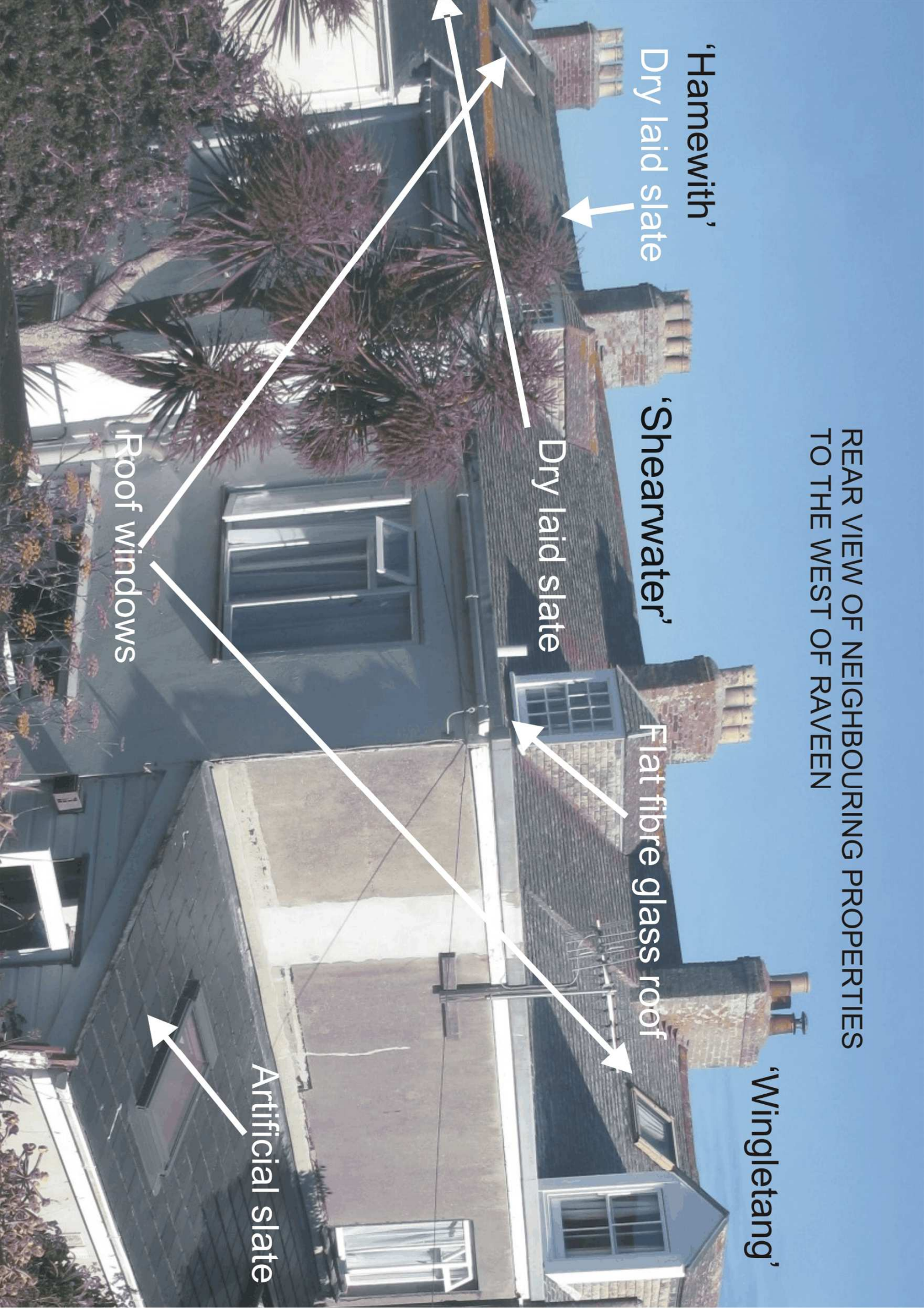
'Hamewith'

'Sheerwater'

REAR VIEW ALONG THE TERRACE



REAR VIEW OF NEIGHBOURING PROPERTIES TO THE WEST OF RAVEEN



'Hamewith'

Dry laid slate

'Shearwater'

Dry laid slate

Flat fibre glass roof

'Wingletang'

Artificial slate

Roof windows

THROUGH REAR GATE OF HAMMEWITH

Dry laid slate

Dry laid slate

