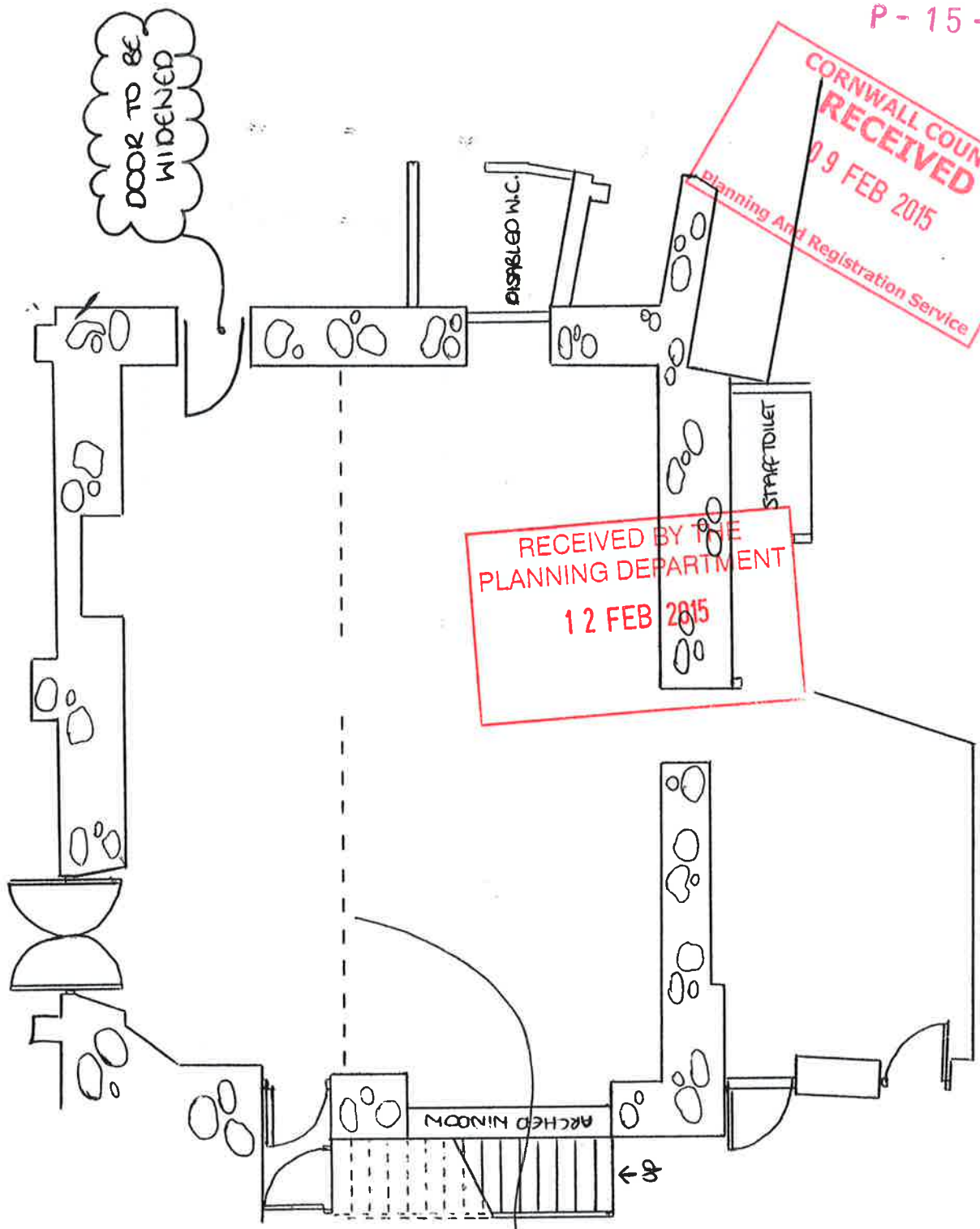


KT03 | 2015

P-15-012



RECEIVED BY THE
PLANNING DEPARTMENT
12 FEB 2015

CORNWALL COUNCIL
RECEIVED
09 FEB 2015
Planning And Registration Service

DOOR TO BE
WIDENED

INTERNAL STUD WALL
BEING REMOVED AS
DISCUSSED WITH LISA WALTON

SCALE: A3 - 1:50

AS EXISTING