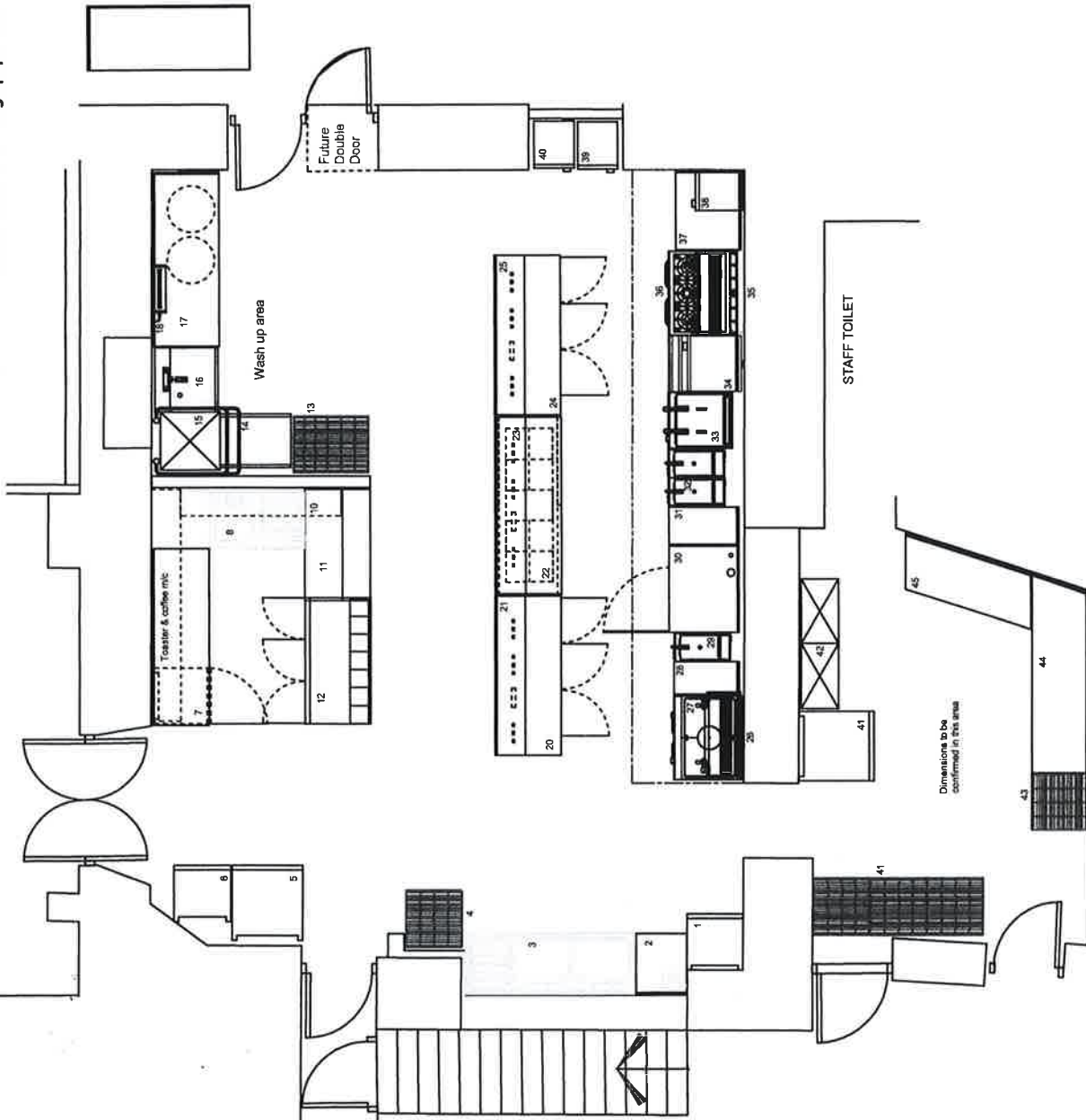


Cornwall Catering Equipment Ltd
 Unit 11 Moorland Road Industrial Park, Moorland Road, Indian
 Queens, Cornwall TR9 6FB Phone 01726 862666 Fax 01726 861702
 visit us at www.cornwallcateringequipment.com



- | | |
|--|---|
| <ul style="list-style-type: none"> 1) Existing Freezer 2) Table with inset hand wash 3) Double bowl sink 4) 4-Tier racking 5) Existing Wine fridge 6) Existing Fridge 7) Table with 2 undershelves 8) Sink 9) Not used 10) Table, open below with serving shelf over 11) Undercounter freezer 12) Refrigerated counter with salad prep. top 13) 5-Tier racking 14) Exit table from dishwasher 15) Existing Dishwasher 16) Entry table with bowl & pre-rinse 17) Table, runners below + bins 18) Existing fly killer 19) Not used 20) 3 door refrigerated counter 21) 2-tier serving shelf with heat lamps 22) Bain marie hotcupboard 23) 2-tier serving shelf with heat lamps | <ul style="list-style-type: none"> 24) 3 door refrigerated counter 25) 2-tier serving shelf with heat lamps 26) Existing Grill 27) Existing Solid top range 28) Infill table 29) Existing single fryer 30) Existing Rational oven from Inn Kitchen 31) Infill table 32) Existing twin fryer 33) Existing twin fryer from Inn kitchen 34) Griddle 35) Existing Grill from Inn Kitchen 36) Existing range 37) Table 38) Existing microwave from Inn kitchen 39) 2 x Existing microwaves from Inn kitchen 40) 2 x Existing microwaves from Inn kitchen 41) 5-Tier Racking 42) Existing Fridge 43) 5-Tier Racking 44) S/S St Prep table 45) S/S St Prep table |
|--|---|

RECEIVED BY THE
 PLANNING DEPARTMENT
 12 FEB 2015

CORNWALL COUNCIL
 RECEIVED
 09 FEB 2015
 Planning And Registration Service

Customer:		REVISIONS:	
St. Austell Brewery		Rev.	Comments
The Atlantic Hotel & Inn			Date
St. Marys			
Isles of scilly			
Scale:	1 : 50	Drawn by:	PWB
Date:	Sept.12		

This drawing is the Property of Cornwall Catering Equipment Ltd and may NOT be reproduced without prior Permission