

Mulciber Ltd

Pendrethen Quarry: Certificate of Lawful Use of Existing Development

Photographic Record of Activities

2003/4 - 2015

Evidence of >10 years of continuous use

- Mulciber Ltd has submitted evidence for more than ten years of its continuous use of Pendrethen Quarry for producing recycled secondary aggregates, topsoils, and fill via crushing and screening.
- Such sustainable practice has been ongoing for >40 years at the site. Mulciber has provided confirmatory written evidence from Quarry operators dating back to mid-1960s.
- Materials from construction and demolition sites around the islands have continued to provide inert and non-hazardous rubble, stones and soils for processing. The materials have been transported to Pendrethen, processed, and sold to local markets.
- A large loading on the Moor Well waste facility has been relieved over the years, and the materials beneficially re-used.
- A table of evidence showing Mulciber Ltd sales of its Pendrethen products from 2004 to the present day has been provided.
- Pendrethen recycled aggregates, equipment, services and expertise has been used in every major and many minor construction projects on St Mary's in the last ten years, with additional export to off-island markets. Projects include the new school build; the off-island quays; Porthcressa regeneration; water mains and reservoir/ desalination plant works; redevelopment of St Martin's waste site; various developments at the airport including the runway resurfacing; Moor Well waste site improvements; Porthlow slip; Quay extension; sea defences including Porth Minack; St Agnes Roads; etc.
- This collection of photographs provides additional supporting information for the CLUED evidence which has already been submitted.

2003-2004

- On surrender of Brian Sandford's lease, Duchy of Cornwall deposit inert C&D materials from local housing projects for recycling at Pendrethen



- ...and Mulciber surveys and starts to recycle the materials into useful secondary aggregates (Mulciber survey team in middle photo)

2003 – 2004

- Further views of the commencement of recycling by Mulciber of the Duchy materials imported to Pendrethen.



- The inroads made via processing and recycling are visible on the right.

2004

- Mulciber commences demolition of middle tier of redundant Quarry buildings and recycles rubble into aggregate.



- The old fixed crusher unit from the quarry is recovered and refurbished by Mulciber, and made into a mobile unit.

2004 -2005

- Mulciber produces crushed recycled aggregates and screened soils / fill at Pendrethen for customers on St Mary's.



- An important high volume customer is St Mary's Riding Centre, then under construction. Here crushed aggregate can be seen in use constructing drains in the sand school

2005-6

- Mulciber carries out a second refurbishment of the mobile crusher and grizzly feeder, which becomes more efficient. It is used regularly at the Quarry for recycling imported and on-site materials.
- The four photos on the right show the crusher set up on the cleared middle tier of the quarry. Piles of imported inert C&D materials to be processed can be seen beside the digger.



2005-2006

- Ben Hicks and Diccon Rogers working closely together as Mulciber and Island Resource Partnerships.
- The refurbished crusher, demonstrated at Pendrethen to Council Officers, Duchy staff, and ReZolve Kernow, is hired by ReZolve Kernow to process the rubble at the St Martin's tip site as part of the improvements there. It is transported to St Martin's and fulfils the contract well before returning to Pendrethen to continue.



2005-2006

- Further plant is purchased by Mulciber, including a wheeled digger and a mobile output conveyor unit, both of which immediately go to work at Pendrethen.
- The plant is transported by chartered landing craft to St Mary's.



2005-2006

- Crushing and screening in progress at Pendrethen. Diccon and Ben obtain a new LJM Tipsaver 200 mobile screening unit with assistance from AONB grant.
- Screen in immediate use at Pendrethen processing imported and on site material to create recycled aggregate and topsoils, and to clean crusher feedstocks
- The photo opposite shows the new screen being at work screening imported material in 2006 on the middle tier of Pendrethen



2005-2006

- The new screen in use on the middle tier, Pendrethen, screening imported inert C&D waste materials
- The close up shows the clean topsoil output from screen (foreground) and the clean block rubble ready for crushing (background)



2005-2006

- Output is enhanced: The new rotary trommel is used to provide different grades of bagged recycled aggregates after crushing and screening (left) and the new conveyor is integrated with the new screen (right)



2005-2006

- A major development in local housing on St Mary's commences at Normandy farm by Chiverton Builders Ltd. Mulciber provides demolition services for redundant farm buildings and hauls away inert rubble for processing at Pendrethen, and return to Normandy site as recycled aggregate.



2005-2006

- Processing of imported C&D waste streams on middle tier, Pendrethen
- The photographs illustrate imported block rubble and topsoil being processed in the new screen, with the older screen and rotary trommel on the right. Note the piles of block rubble stockpiled in background



2005-2006

- In the photo below, the whole system is integrated on the middle tier at Pendrethen, producing quality recycled aggregates from imported C&D waste streams and reselling to local markets.



2006 -2007

- Importing and processing via crushing and screening continues at Pendrethen.
- Mulciber works closely with BAM Nuttall on Off-Island Quays project and hires a larger excavator from BAM Nuttall to accelerate production at Pendrethen. The 25 te machine is delivered to Bar Point by Landing Craft and gets to work on recycling.



2008-2009

- Mulciber acquires a 16 te tracked Liebherr excavator from Tresco Estate solely for use in feeding the crusher and screener at Pendrethen when processing imported and on-site materials.
- The excavator is delivered from Tresco by landing craft to Bar Point and immediately goes to work in the Quarry. Production is enhanced.



2008-2009

- Screening of imported and on site materials is accelerated (see right hand picture below, showing imported topsoil screened at middle tier)
- Scrap machinery from previous occupiers is removed for recycling (see left hand picture below, also noting imported rubble being recycled by screen)



2010 -2011

- Importing of inert C&D waste (rubble and topsoil), processing, and resale to local markets continues at Pendrethen.
- Local sales and activities including to Council and Council Contractors in essential infrastructure works.
- The photographs below show Mulciber Ltd excavating at Old Town in water main works for Council Contractors, and providing recycled aggregates from Pendrethen for the works. The aggregate is shown in stockpiles in the foreground of each photograph.



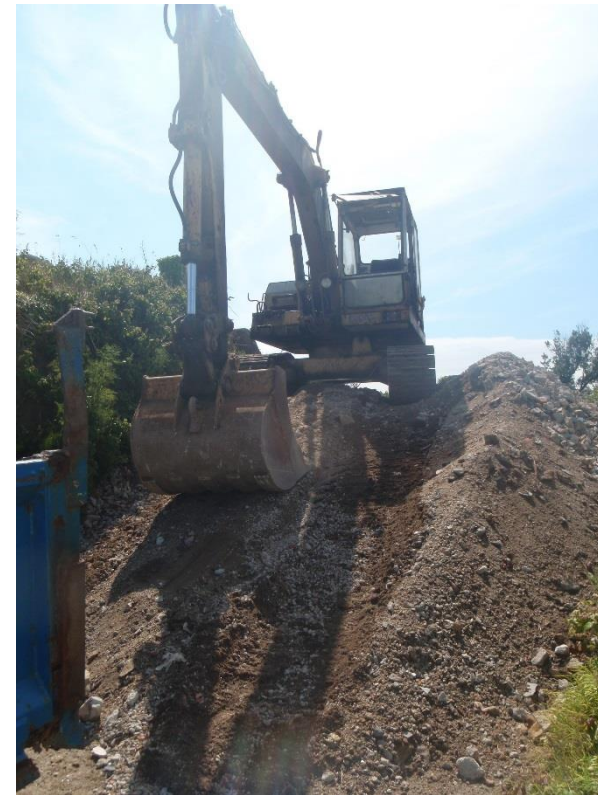
2010-2011

- Extensive processing and screening of imported materials and on-site materials in the lower tier using plant as now acquired.
- Note piles of product in photographs, crushed and screened from cleaned imported concrete block rubble and re-sold to local markets.



2010-2011

- Further processing of imported materials in the middle tier, and improvement of internal haul road using Liebherr excavator



2010 -2011

- Importing of inert C&D waste (rubble and topsoil), processing, and resale to local markets continues at Pendrethen.
- Recent representations from Dr R Hessing of 'Jedi', McFarland's Down, and others have been noted in relation to the CLUED application, claiming that significant activities are not recalled as taking place at Pendrethen prior to 2012.
- It is notable that Dr Hessing and Mrs Jenkins were customers of Mulciber's services at Pendrethen during 2011, when excavation activities were undertaken at the house 'Jedi' and the arising topsoil recycled directly down the road at Pendrethen, as the photographs on the right show. Dr Hessing's expressions of enthusiasm at the time for recycling at Pendrethen, and the consequent cost reductions to this work, were noted at the time by the site supervisor.



2010-2011

- The Pendrethen recycled aggregates and fill are variously sold within the islands on large and small construction projects.
- The photograph on the upper right shows a typical soakaway construction using both crushed and screened product runs, and the lower right shows a close up of trailer full of 50-90mm screened stone from imported 'as dug' topsoils.



2012 -2013

- Production continues at Pendrethen via importing and processing inert C&D waste streams. Screening on middle tier



2012-2013

- Large order from Council of Isles of Scilly to accept “as dug” arisings from Porthcressa Regeneration project for processing, recycling and resale or use on site at Mulciber’s discretion. Deliveries by lorry of > 2000 te. LH photo below shows commencement, centre photo shows completion.
- Storage of Porthcressa tarmac on site in trailers for CIOS (in background, centre photo, and close up, RH photo)



2012-2013

- Mulciber purchases new modern mobile crusher with assistance from LAG. It is delivered by landing craft to Porthlow and goes straight to work the same day on the middle tier at Pendrethen, crushing a stockpile of imported block rubble for resale to local markets.



- Production is enhanced. Note piles of good quality product from imported clean block rubble in two RH pictures.

2012-2013

- The new crusher also goes to work crushing on contract at CLOS Moor Well tip site, processing >1000te very rapidly working with the mobile screen (lower left and centre photo)
- The recycled aggregate product is analysed and tested, hauled to Pendrethen, further processed and sold to local markets. (right hand photo)



2014-2015

- Mulciber continues importing, crushing and screening at Pendrethen
- A major project is Porthlow Slipway construction, which uses large amounts of recycled aggregates from Pendrethen. Without the reduction in costs given by Pendrethen recycled aggregates, the project would have been unaffordable. The photo below shows the recycled aggregate being laid as compacted fill in foundations, and the slip nearly complete. Inert waste arisings from Porthlow were transported from site and recycled at Pendrethen for aggregates in other projects.



2014-2015

- With extensive damage to coastal areas and sea defences during severe winter gales, recycled armourstone and walling stone from Pendrethen is used by Mulciber to repair Porth Minack under contract to Council.



2015-ongoing

- Importing of inert C&D waste streams, processing via crushing and screening, and resale to local markets continues at Pendrethen. It is a sustainable, low-impact local recycling centre that has served the islands in this manner for many years. A recent large supply has been to the St Agnes Roads project.
- Furthermore, the mobile recycling equipment based at Pendrethen continues to provide sustainable on-site, on island recycling wherever possible, including at Moor Well, for the airport runway resurfacing, and for the Quay Extension.



Thank you