

1 of 2

2 of 2

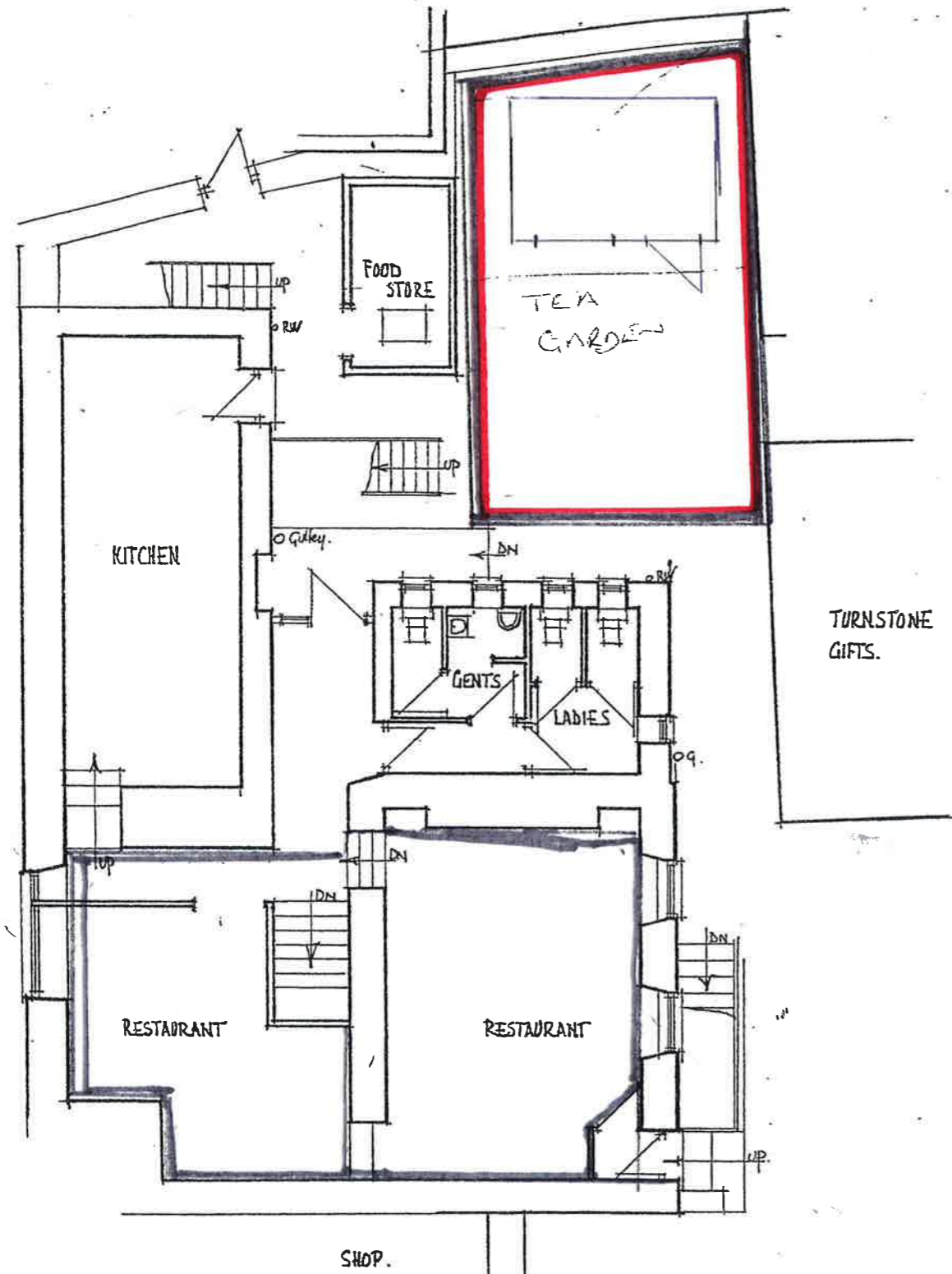
NO WORK ON ALL
RESPONDENCE

THE CORNERHOUSE

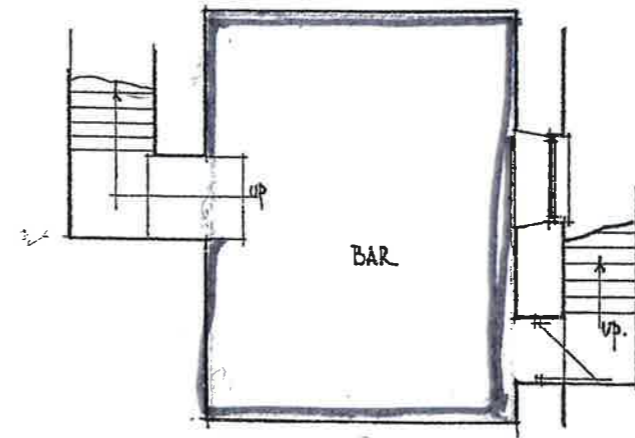
HUGH TOWN St. MARYS

ISLES of SCILLY

EXISTING PLANS



GROUND FLOOR



BASEMENT

P-15-106

RECEIVED BY THE
PLANNING DEPARTMENT
09 DEC 2015

T.J. HIRD ARCS
'CLOWDISLEY'
St. MARY'S
ISLES of SCILLY
TEL - 423333 FX 422563

DATE - JULY 2000

SCALE - 1:100