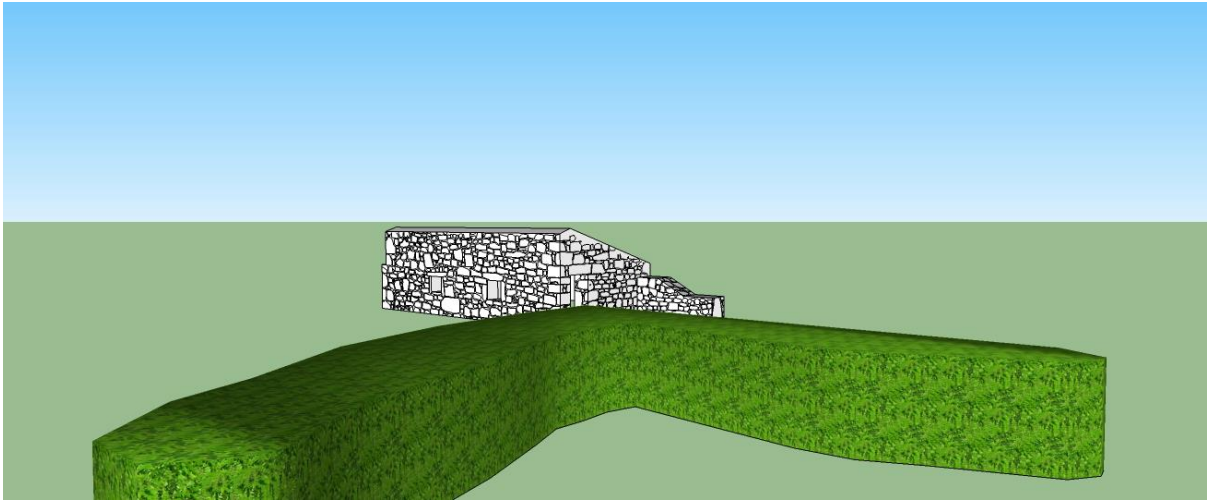
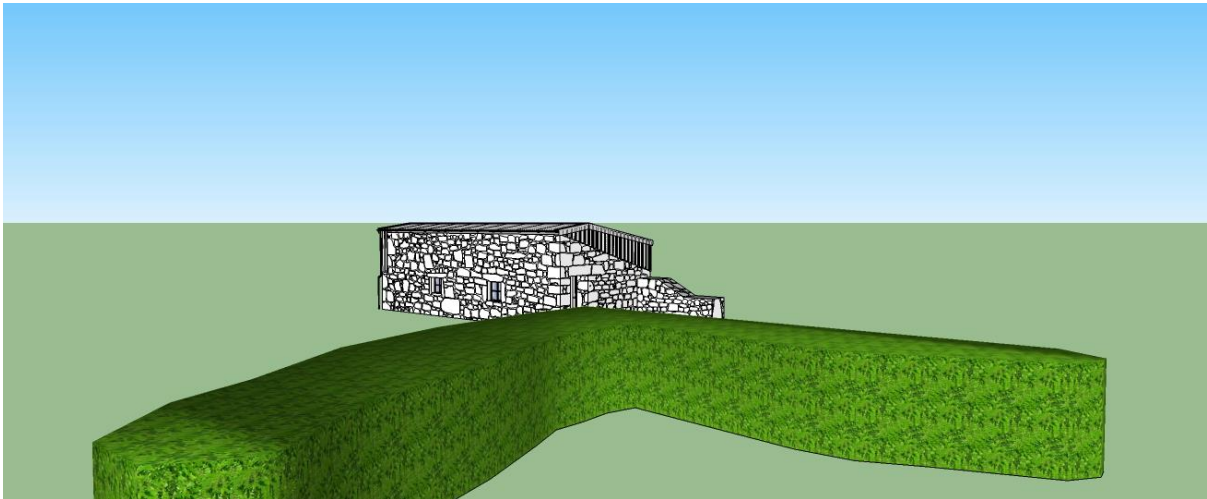


Propose Renovation of Mowhay Barn Trewince

Additional Images



DRG\_011 View from Trewince House



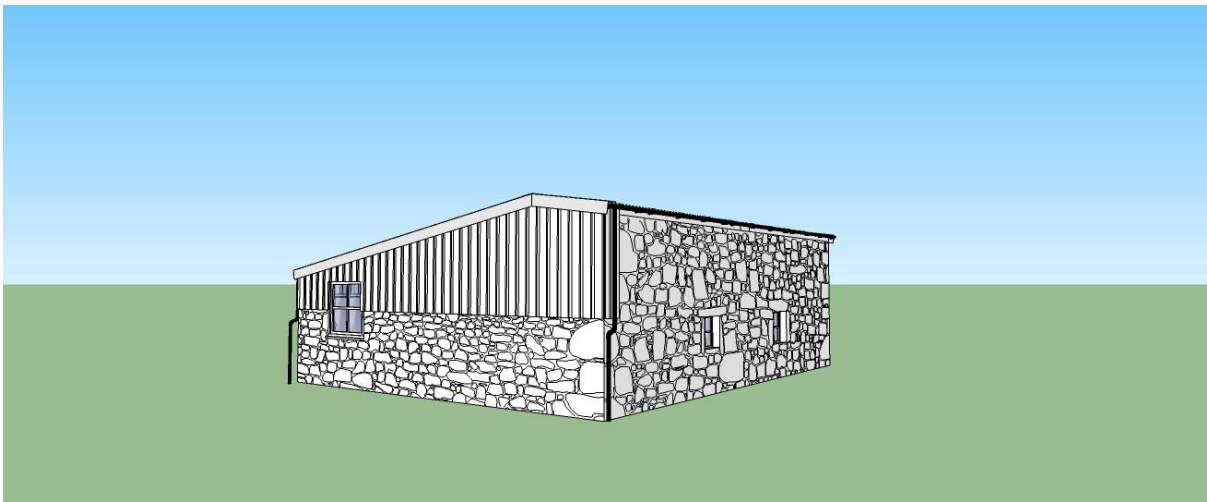
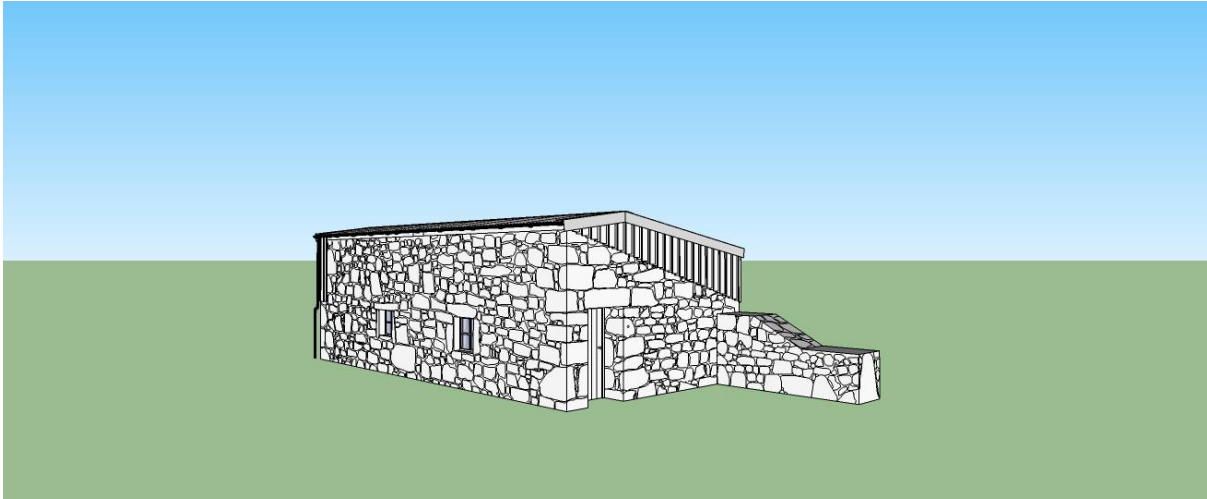
DRG\_012 View from Trewince House with proposed renovation



Photo from Trewince House (post indicates proposed height in initial design)



Enhanced photo from Trewince house with impression of proposed renovation





South elevation with rotted external timber lintel.



East Elevation



An example of how the stone work is not easy to read



Internal doorway lintel rotted away