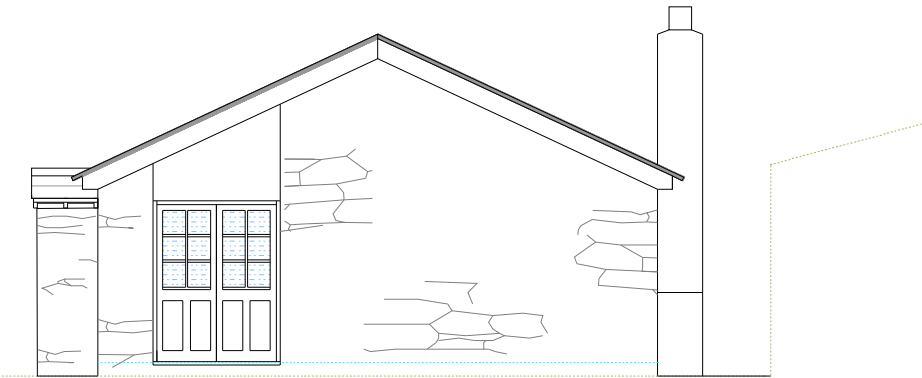
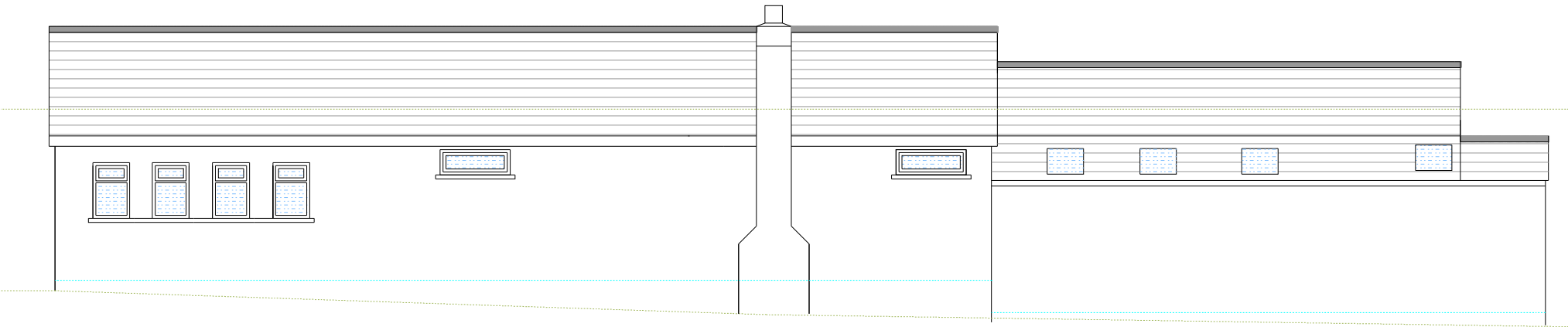


SOUTH ELEVATION (existing)



EAST ELEVATION (existing)



NORTH ELEVATION (existing)

NOTE: West Elevation Eliminated as elipsed by bank / neighbouring building

| | | | | | | | | |
|---|--|--|--|------------|---------------------|-----|------------|------------------|
| Any Discrepancies - Please feed back to Framelines Planning Drawings - NOT FOR CONSTRUCTION OR FABRICATION | <div>1:100 (On A3)</div> <div><div>0m1m2m3m4m5m10m</div></div> | <div><div><div><div></div></div><div>Framelines</div><div>TIMBER ARCHITECTURE</div></div><div>PLANNING</div></div> | | | | | | |
| | | For: Dom and Emily Crees Project: Function space | | DRAWING NO | TITLE | REV | DATE | SCALE |
| | | Seven Stones Inn St Martins Isles of Scilly | | | | | | |
| | | | | 005 | Existing Elevations | A | 14/12/2016 | 1:100 (on A3) |