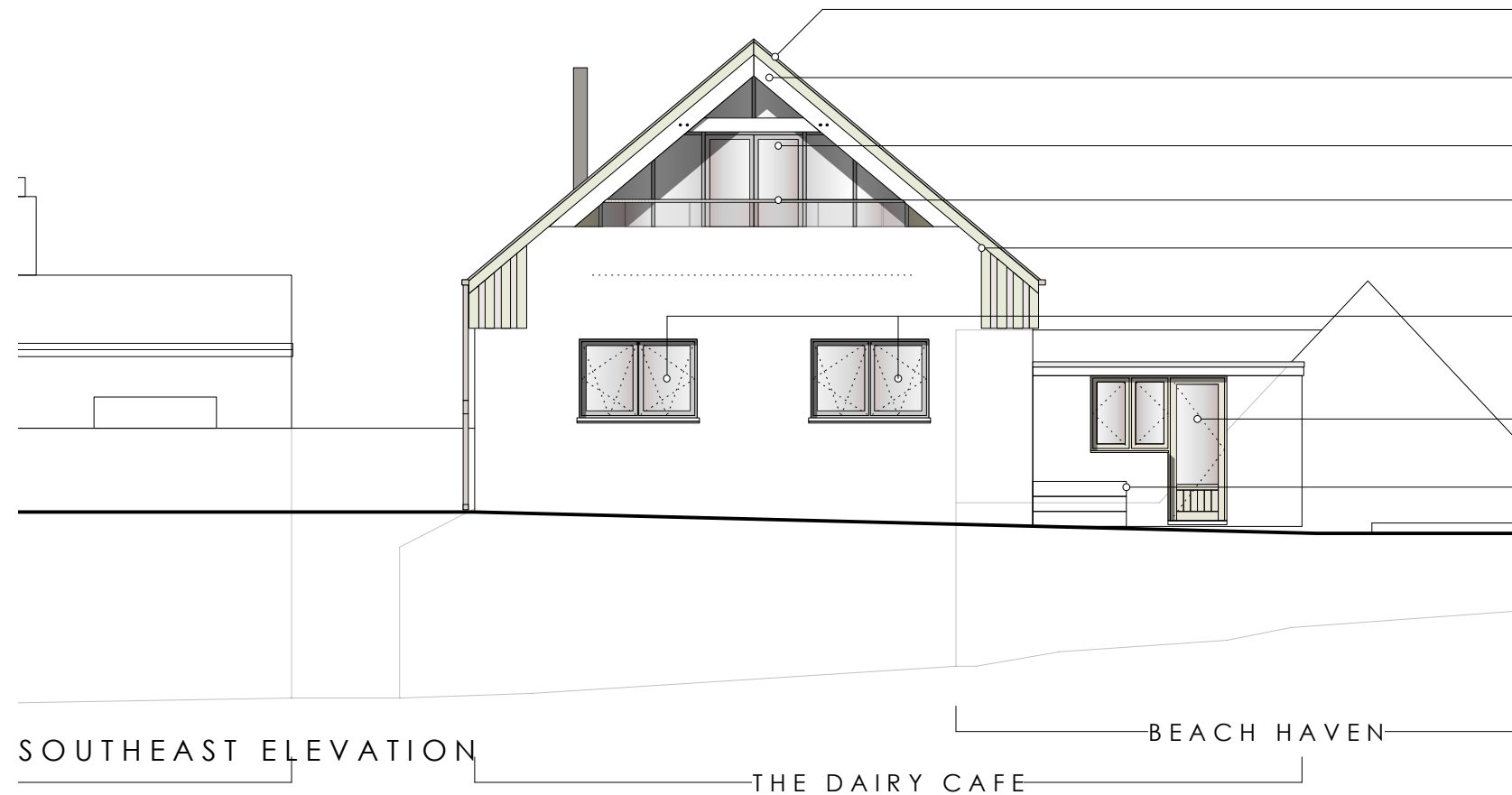


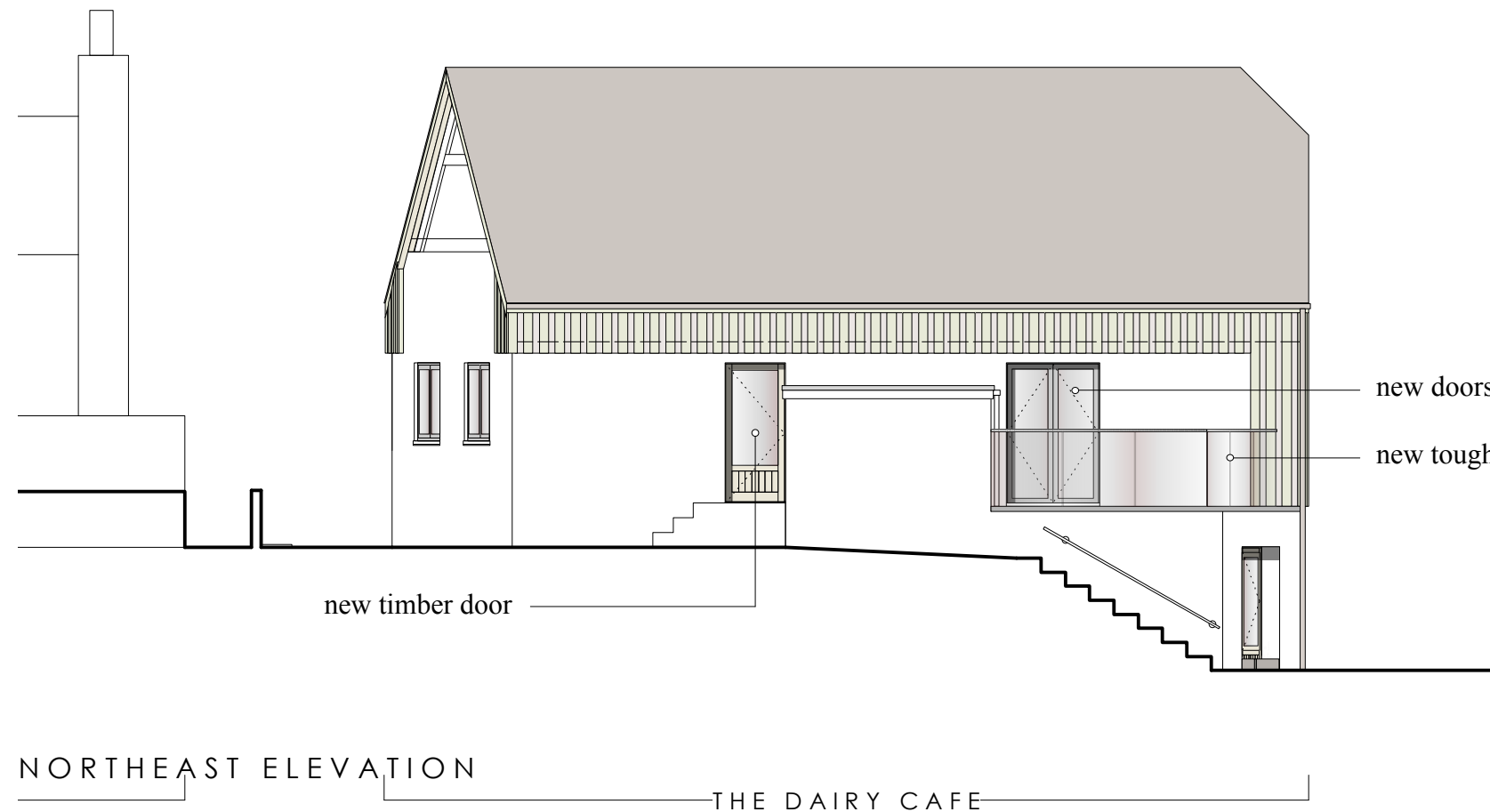
10
5
0



- new roof at 40° pitch in slate tiles
- exposed timber rafters - painted
- curtain walling and doors in powder coated aluminium
- toughened glass balustrade
- cladding in board and batten, western red cedar
- aluminium windows in powder coated aluminium, tilt and turn
- new timber doors and windows
- new concrete steps

0 5 10 15
SCALE IN METRES

10
5
0



- new doors in powder coated aluminium
- new toughened glass balustrade

APPROVED
By Craig Dryden at 10:41 am, Nov 10, 2017

Revision A - 18.09.17 - Reduction in height of 69cm
Addition of half hip gable to front
Alterations to balcony detailing

THE DAIRY CAFE
HIGHER STRAND ST MARYS
PROPOSED
ELEVATIONS
SE+NE

DRAWING NO. DC12A
DATE - MAY 2017
SCALE - 1:100