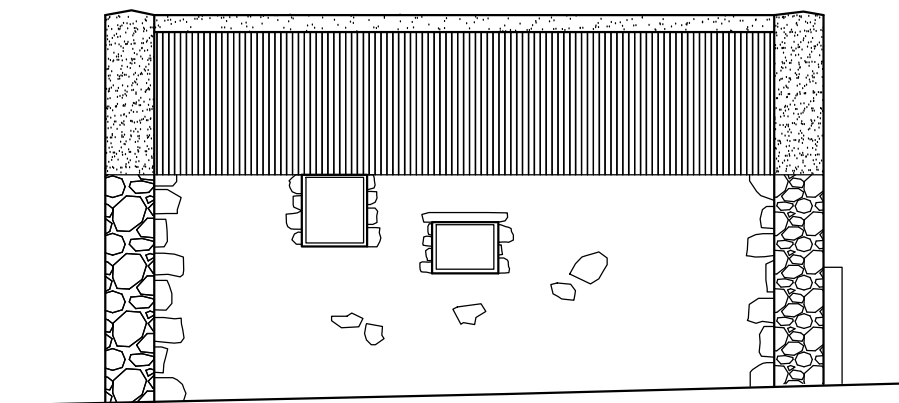
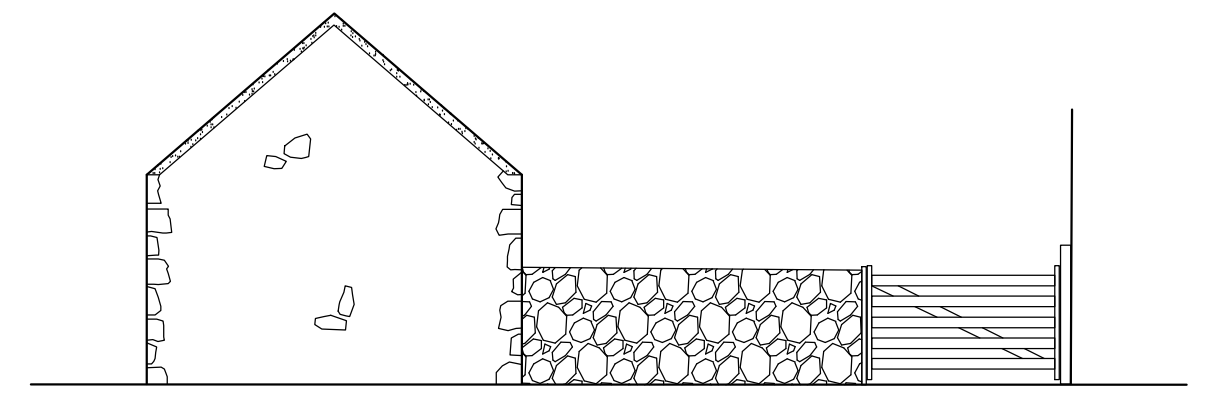


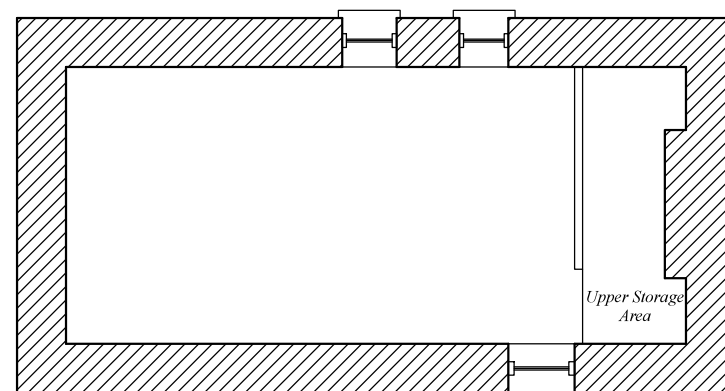
East Elevation



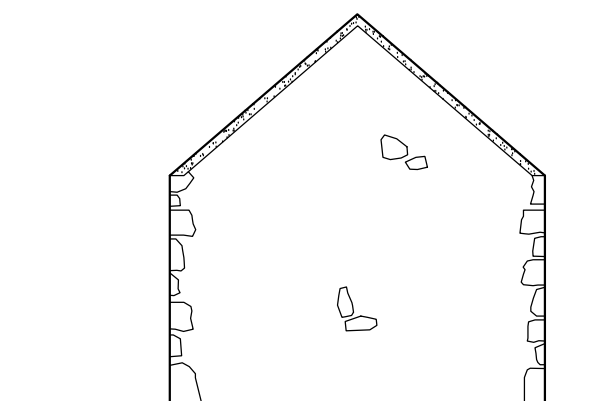
West Elevation



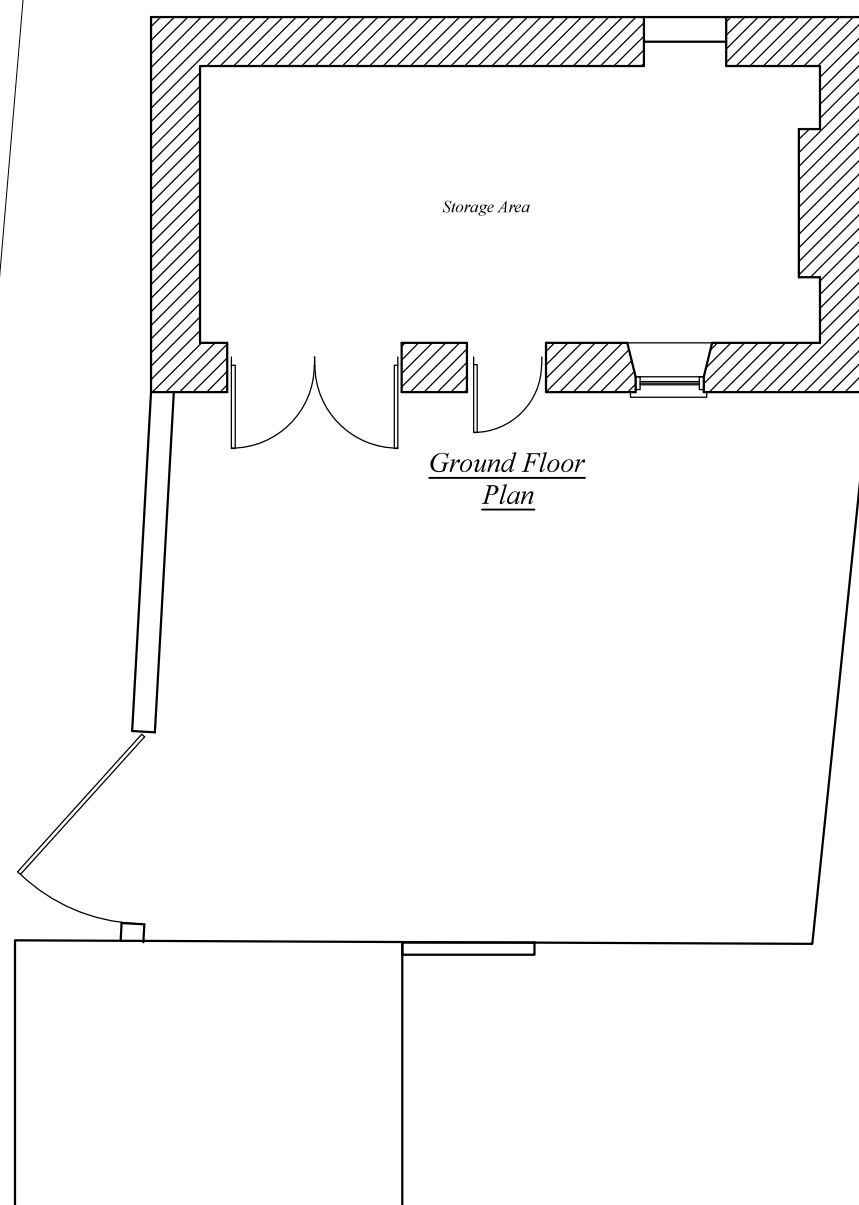
South Elevation



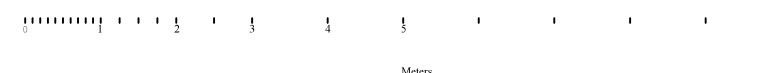
Upper Floor



North Elevation



Ground Floor Plan



*Leah's Barn
St. Agnes
Isles of Scilly*

Existing Building

Mrs R Smith

*Date - August 2017
Amended - November 2017
Scale - 1 : 100 @ A2*

*PAUL OSBORNE
CARN THOMAS
ST. MARY'S, ISLES of SCILLY.
TR21 0PT Tel (01720) 423066
Email: paul@sailscilly.com*

N.B.-No measurements to be scaled from this drawing unless specified. Whilst all efforts are made to insure accurate measurements Any discrepancies should be reported immediately to the architect.

LB-EB2a