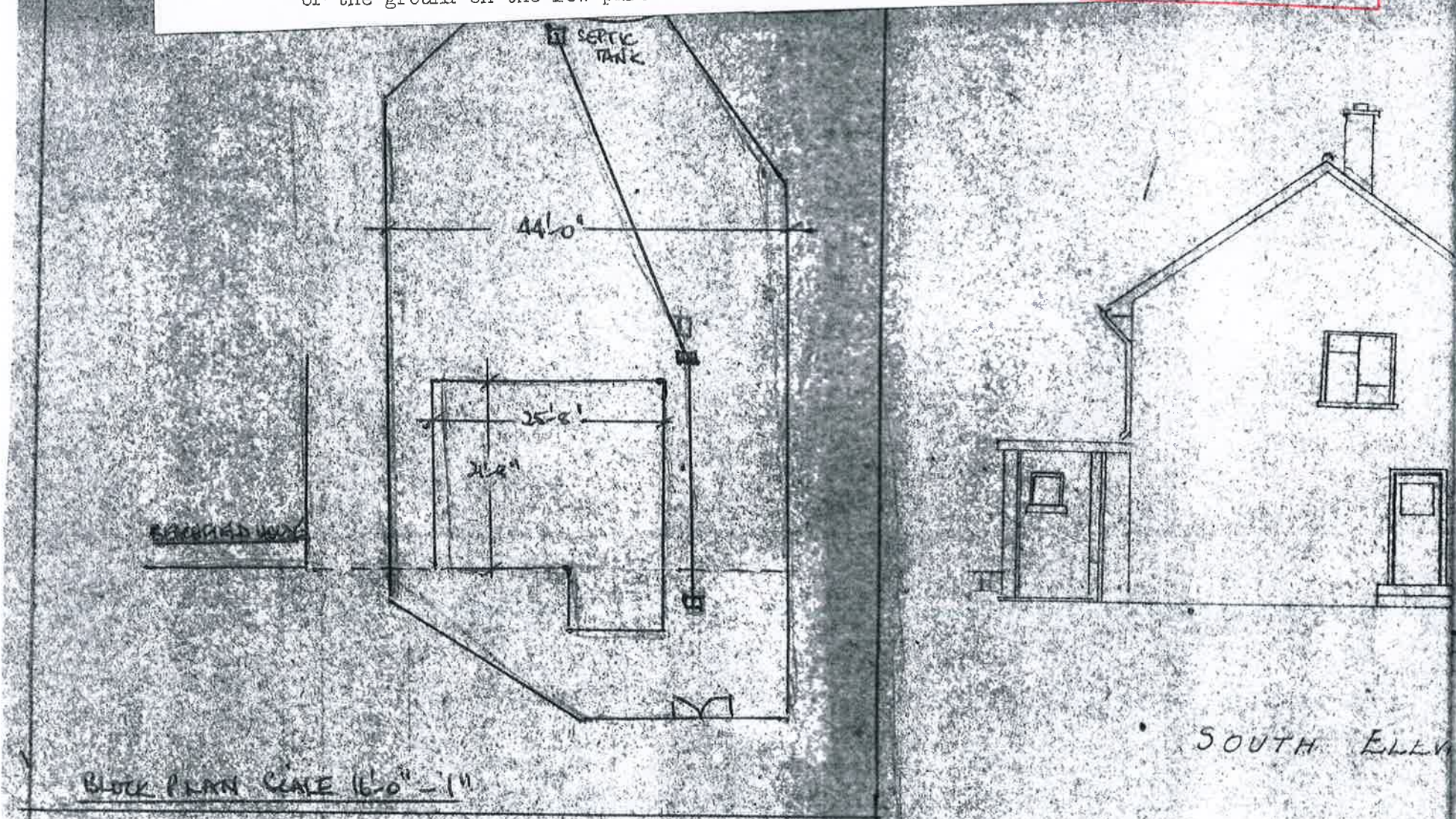


House, Thomas Porth - G.S.Woodwark (P.398)

After carrying out a further inspection of this site and the proposal it was agreed that such was the variety of the existing houses that a house of this design fitted in the gap between the large house with dormer windows (Beachfield) and the bungalow on higher ground and could not be objected to on amenity grounds, provided the ground floor of the house is at the level of the ground on the low part of the front of the site.

RECEIVED BY THE
PLANNING DEPARTMENT
27 OCT 2017



BLOCK PLAN SCALE 1/6" = 1'

SOUTH ELEVATION