

This website uses cookies.  
You may choose to block non-essential and unknown cookies.

Show

Allow

Block

RECEIVED BY THE  
PLANNING DEPARTMENT

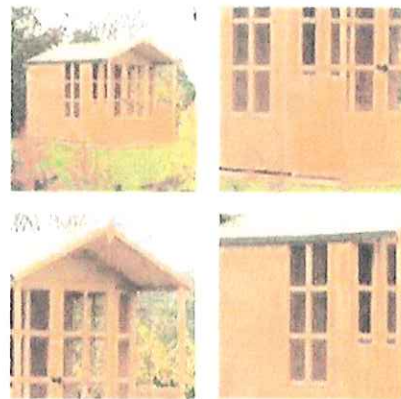
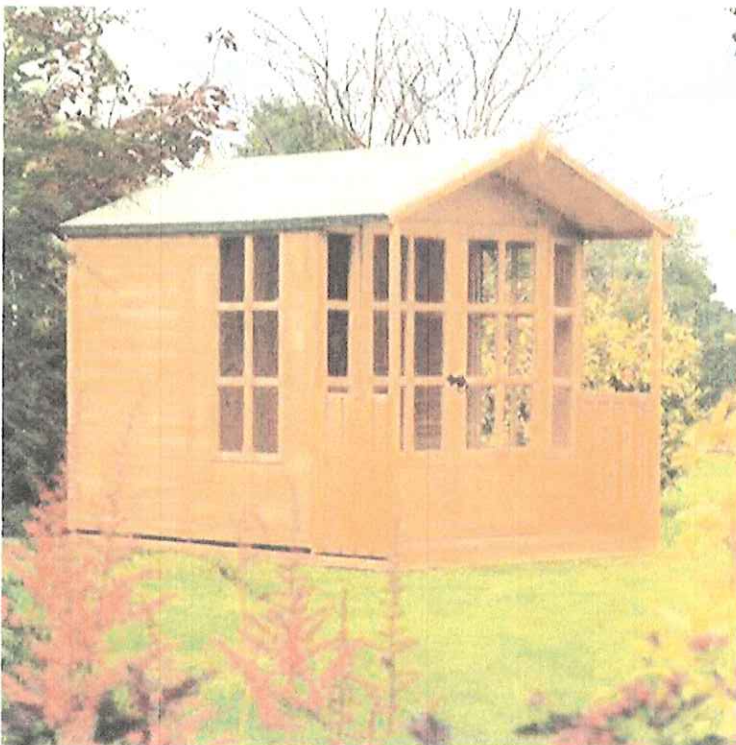
27 MAR 2018 HOMEPAGE

PRODUCT  
SEARCH

ABOUT US

Cabins and Summerhouses

## Arley Summerhouse



2

Code: SH7X7V  
Barcode: 5013856012368

### Product Dimensions

#### External

- Height: 2220mm
- Width: 2130mm
- Depth: 3050mm

#### Internal

- Height Max: 2020mm
- Height Min: 1700mm
- Width: 1980mm
- Depth: 2060mm

#### Veranda

- Depth: 840mm

#### Door Opening

- Height: 1670mm
- Width: 1365mm

#### Footprint

- Width: 1980mm
- Depth: 2905mm

#### Ideal Base

- Width: 2080mm
- Depth: 3005mm

### Product Features

- Covered veranda
- Two opening side windows
- Tongue and groove floor and roof
- Double doors
- 12mm shiplap cladding
- Dipped honey-brown finish
- Toughened glass
- Mineral roofing felt

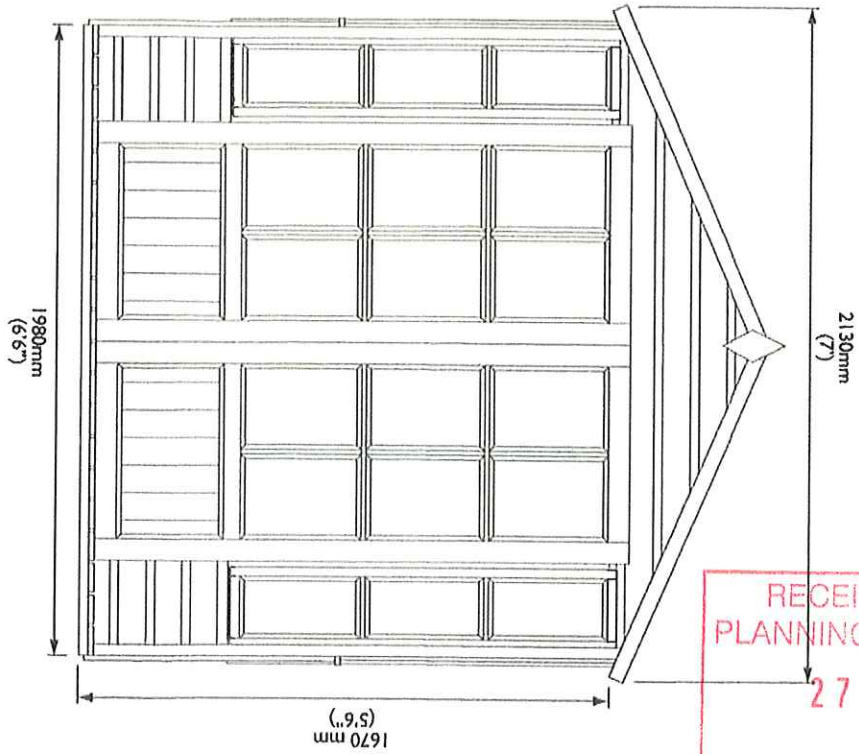
A stylish summerhouse with a covered verandah for whiling away those warm summer evenings.

RECEIVED BY THE  
PLANNING DEPARTMENT

09 AUG 2016

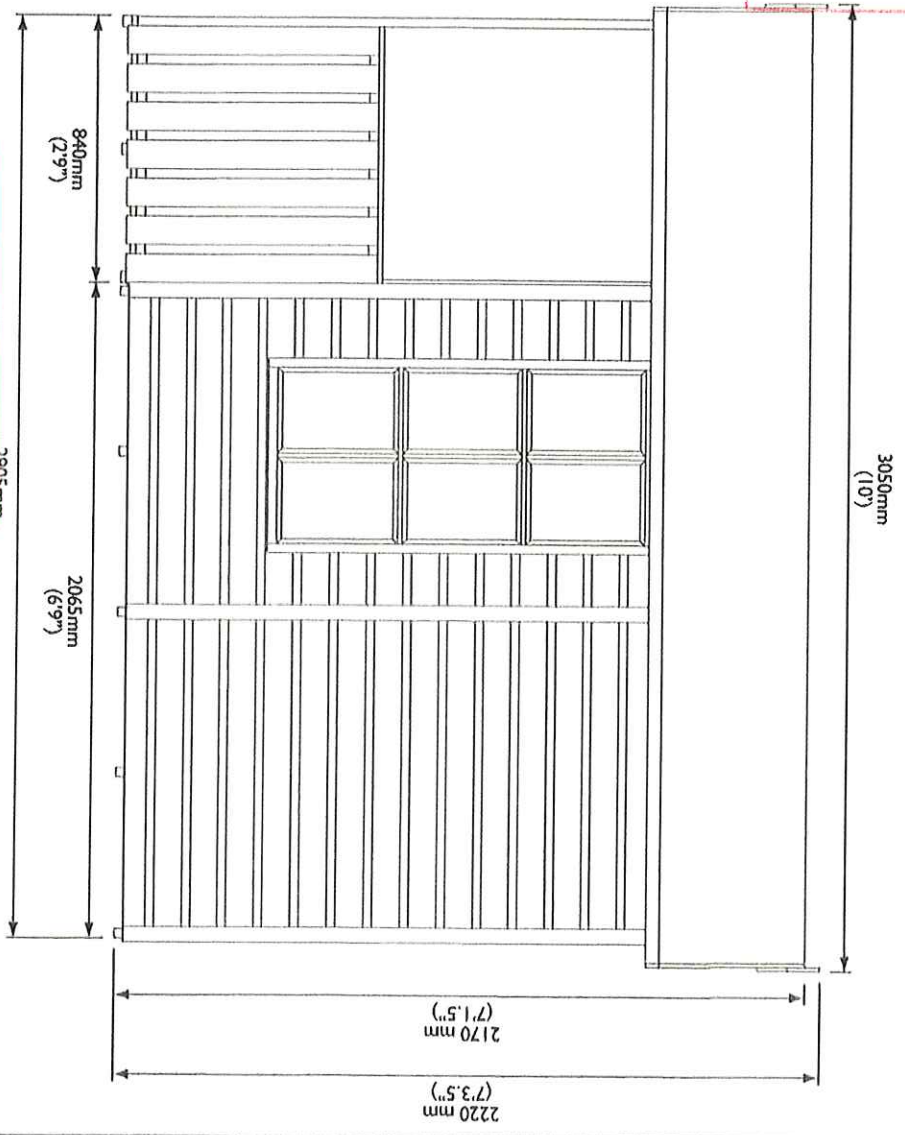
P-18-025  
P-116-0825

EXISTING



**Door Opening:**  
 Height: 1670mm (5'6")  
 Width: 1365mm (4'6")

RECEIVED BY THE  
 PLANNING DEPARTMENT  
 27 MAR 2016



RECEIVED BY THE  
 PLANNING DEPARTMENT  
 09 AUG 2016

# Arley Summerhouse

## PRODUCT DIMENSIONS

DRAWING REF: SH7XV PD 1

DRAWING DATE: 18.06.15



**ROWLINSON**  
 GARDEN PRODUCTS

2015 © Rowlinson Garden Products Ltd