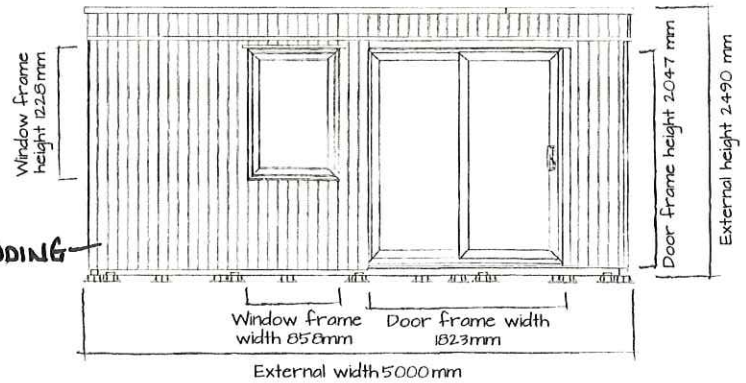


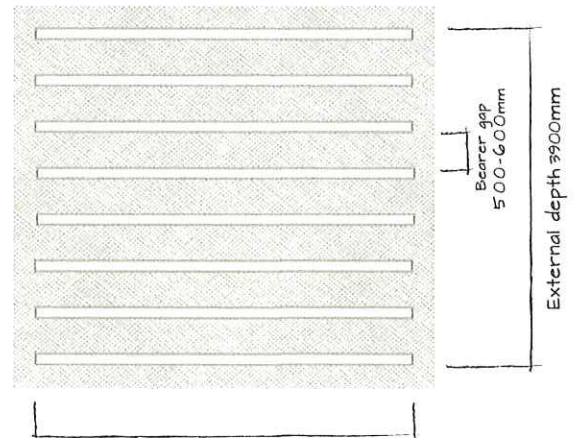
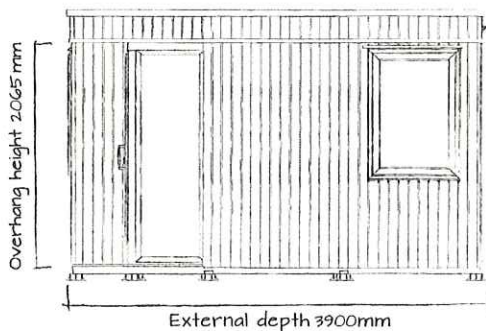
Proposed Elevations and Materials

RECEIVED BY THE
PLANNING DEPARTMENT
27 MAR 2018

WOOD CLADDING



Use a flat level base allowing 100mm all around in addition to external cabin measurements.



ELEVATIONS NOT SHOWN - WOOD CLAD PANELS NO WINDOWS OR DOORS.

DIMENSIONS:

External width 5000mm (16'5")
 External depth 3900mm (12'9")
 External height 2490mm (8'2")
 Overhang height 2065mm (6'9")
 Internal ceiling height 2065mm (6'9")

Door walkthrough height 1945mm (6'5")
 Door opening size 695mm x 1945mm (2'3" x 6'5")
 Window opening size 720mm x 1090mm (2'4" x 3'6")

WALL OPTIONS

117mm Tongue & Groove

To be fitted with 'Eco-Guttering' kit to allow Rainwater Harvesting

Internal width 4770mm (15'8")
 Internal depth 3630mm (11'11")
 Internal area (m²) 15.67m²
 Wall U-VALUE* 0.62

FEATURES:

Windows: 1 Opening, 1 Door Side Panel
 Walls: Spruce
 Glazing material: 28mm Toughened Glass
 Roof covering options: EPDM
 Roof material options: 45mm Insulated SIP Roof Panels
 Floor material options: 45mm Insulated SIP Floor Panels
 Floor bearers: Pressure Treated

Window locking system: Multi Point with Mushroom Headed Espagnolettes
 Gaskets: On all Windows and all Doors
 Treatment: Pressure Treated

All measurements given are approximate.

*The U-Value is a standard measure of how fast heat will pass through a material. The lower the number, the better the insulation or construction.