



Material Key

Roof

Garden cottages - slate

Walls

Garden cottages - white render with granite detailing and granite quoins

Windows and Doors

Garden cottages - painted timber

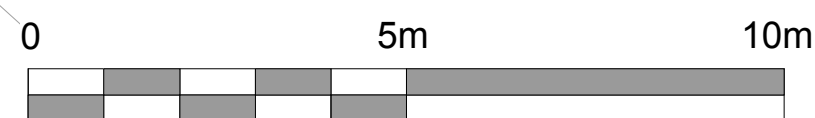
Hotel refurbishments - powder coated aluminium

External Features

Terrace balustrade - 1.5m glass balustrade

External decking - treated timber

APPROVED
By Craig Dryden at 3:03 pm, Sep 28, 2018



Rev	Date	Description	Author
-	20.04.18	planning issue.	le
A	01.05.18	Hipped roof removed, existing ridge extended.	le
B	04.07.18	Note regarding new downlights and flag pole removed following planners comments	le

Chimney stack demolished to enable new glazing at bedroom and new mezzanine level

Proposed hipped roof removed and ridge extended

PLANNING

Tregarthen Hotel
Isles of Scilly

Garden Cottages &
Hotel Refurbishment
Proposed Roof Level

Scale: 1:100 @ A1 (1:200 @ A3)

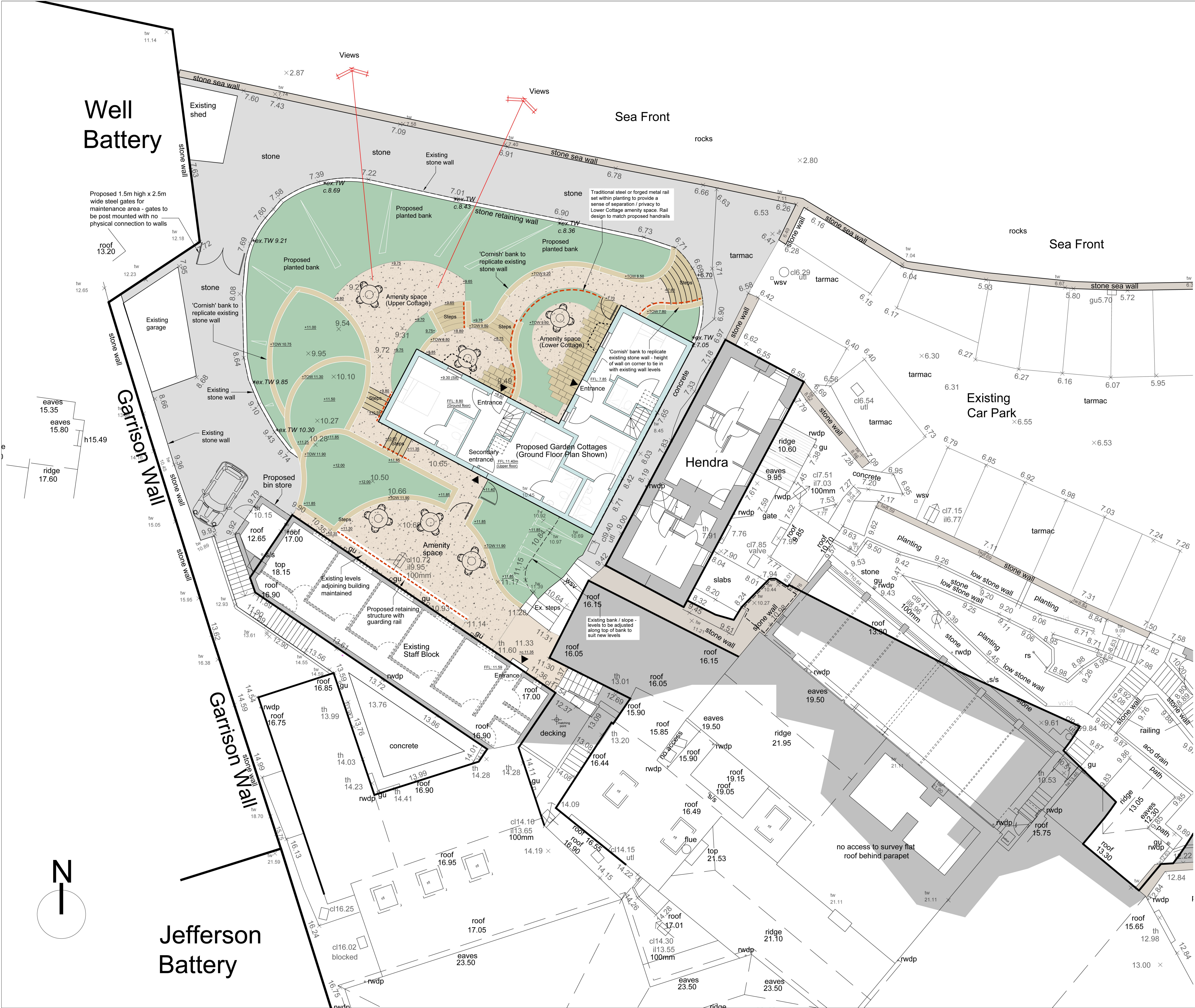
Drawing No: 1156 / P104 rev. B

The Boat Shed, Michael Browning Way
Exeter EX2 8DD
01392 438051 mail@g-a.uk.com

grainge architects

KEY

- Existing levels (general site survey information)
- Existing levels (top of existing stone wall / bank)
- Proposed levels
- Existing surfacing
- Proposed gravel footpath using 25-30 mm depth 10mm shingle dressing laid over a Type 1 sub-base (or equivalent). Sub-base to be blinded with a fines dressing
- Proposed granite paving using 'site won' material where possible or locally sourced where required. Paving to be laid in random pattern (flexibly laid) with sand-filled joints (jointing aggregate) - see notes below
- Proposed granite steps (mortar bedded and jointed) using 'site won' stone where possible or locally sourced where required
- Traditional and simple steel or forged metal rail set within planting to provide a sense of separation / privacy to Lower Cottage amenity space. Rail and pedestrian gates design to match proposed handrails
- Proposed planting areas using a mix of hedge / shrub / groundcover garden species that are typically found in the Isles of Scilly



For further information on proposed materials please refer to Indigo Landscape Architects drawing: 771_Precedent Hard Materials Palette sheet

rev	description	date	by	chk
project	GARDEN COTTAGES	TREGARTHENS HOTEL	client	
drawing title	PROPOSED GARDENS LAYOUT PLAN			
drawing number	771-MP-01	revision	status	scale
			INFORMATION	1:100

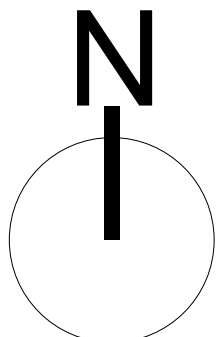
By Craig Dryden at 3:01 pm, Sep 28, 2018



Location Plan @ 1:1250



Rev	Date	Description	Author
-	20.04.18	planning issue.	le



Jefferson
Battery

E _____ F

Garrison Hill

PLANNING

Tregarthen Hotel
Isles of Scilly

Garden Cottages & Hotel Refurbishment Site Location Plan

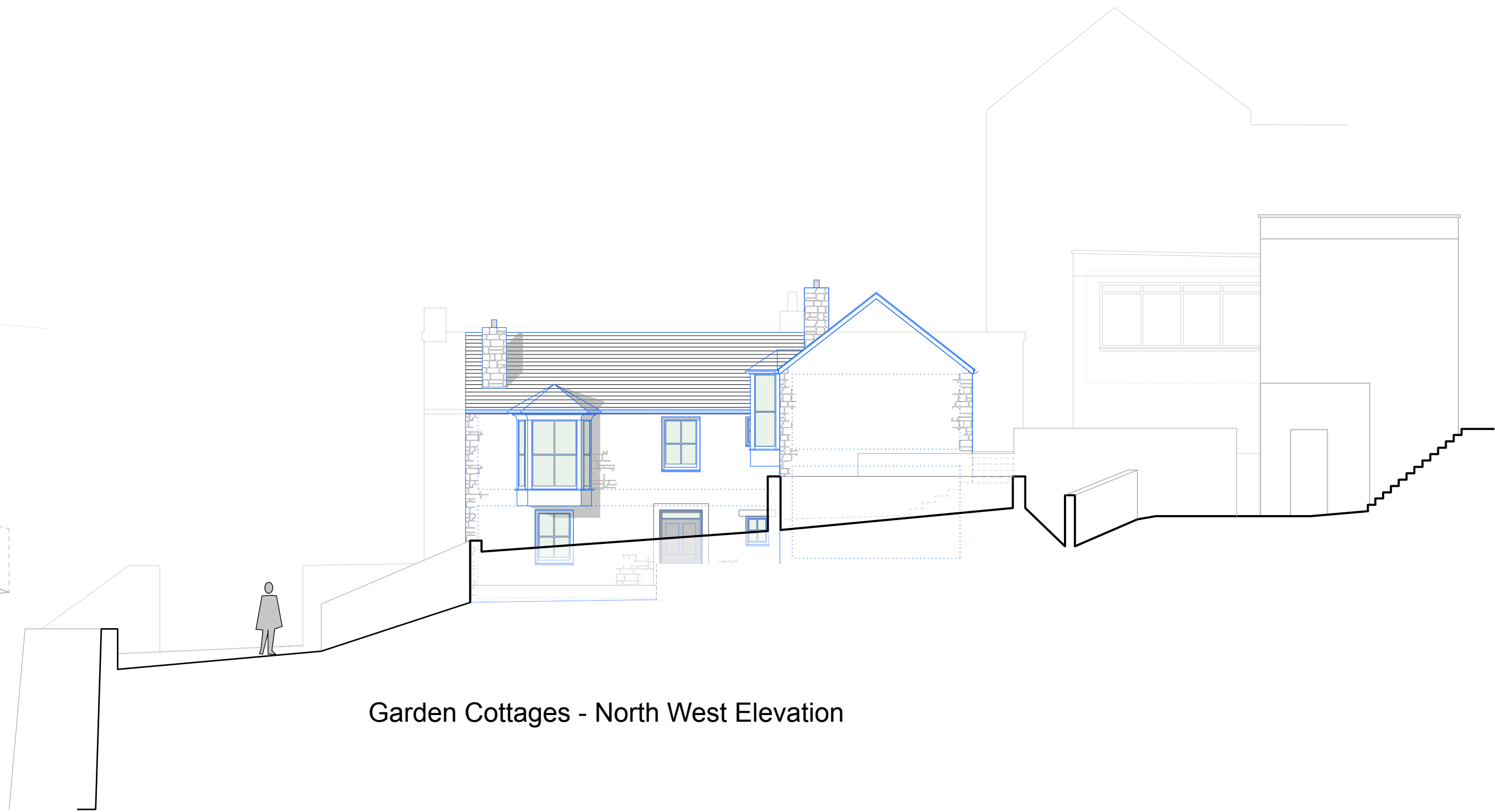
Scale: 1:100 @ A1 (1:200 @ A3)

Drawing No: 1156 / P99 rev. -
The Boat Shed, Michael Browning Way
Exeter EX2 8DD
01392 438051 mail@g-a.uk.com

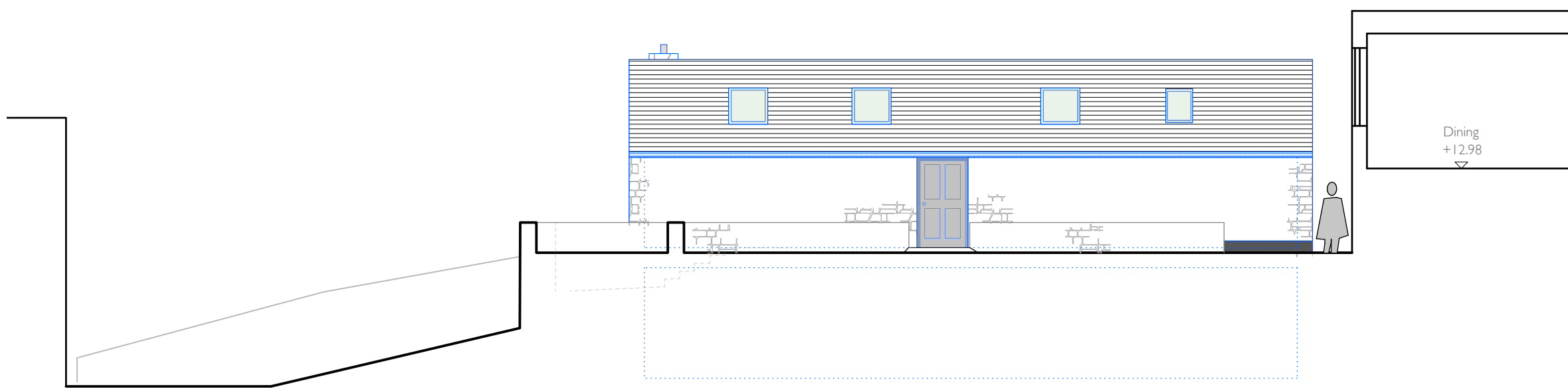
grainge architects



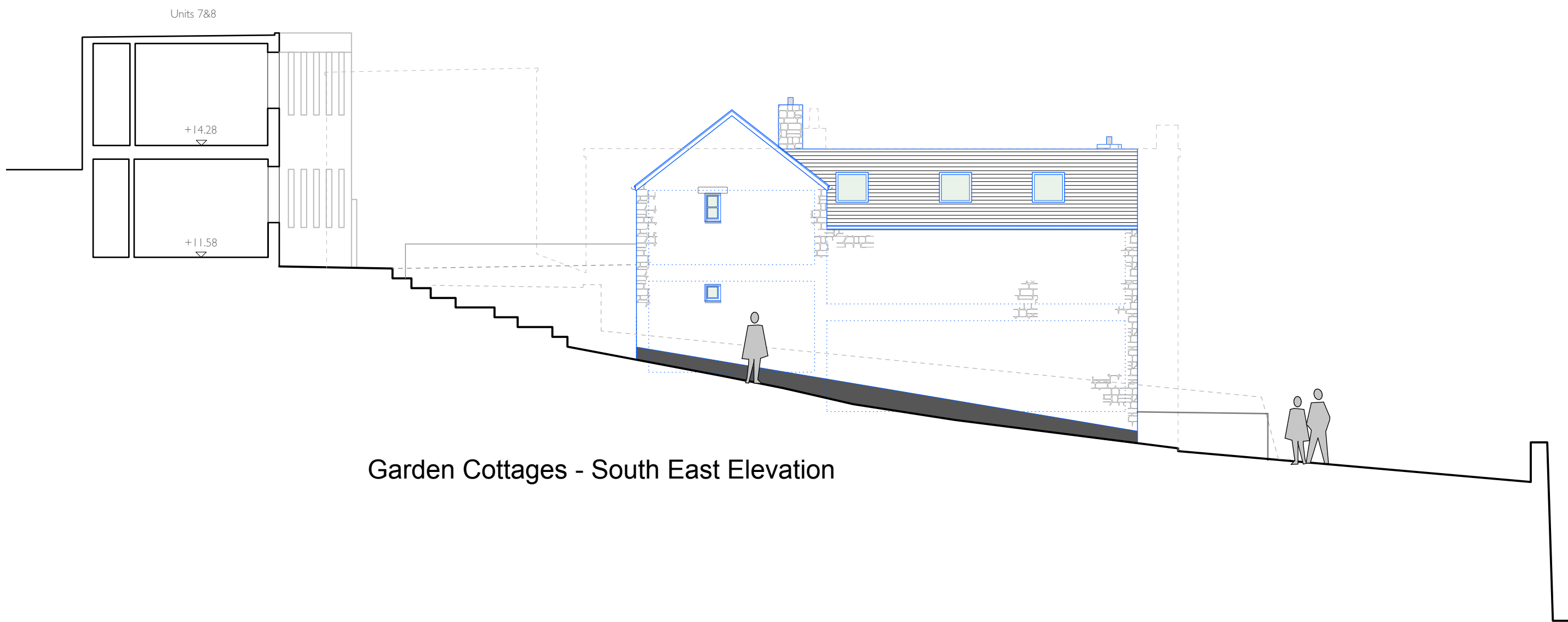
Garden Cottages - North East Elevation



Garden Cottages - North West Elevation



Garden Cottages - South West Elevation



Garden Cottages - South East Elevation

Material Key

Roof

Garden cottages - slate

Walls

Garden cottages - white render with granite detailing and granite quoins

Windows and Doors

Garden cottages - painted timber

Hotel refurbishments - powder coated aluminium

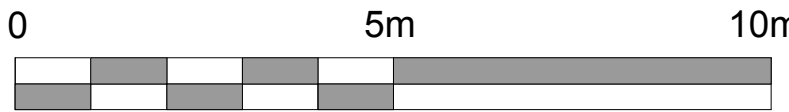
External Features

Terrace balustrade - 1.5m glass balustrade

External decking - treated timber

APPROVED

By Craig Dryden at 3:01 pm, Sep 28, 2018



Rev	Date	Description	Author
-	16.02.18	Draft phase 2 planning first issue.	et
A	20.04.18	planning issue.	le
B	04.07.18	Note regarding new downlights and flag pole removed following planners comments	le

Hugh Town vernacular detailing that informed the design concept



White rendered facade with exposed stone detailing



Local stone cottages with white window and door reveals and brightly coloured doors



Rendered terraced cottages with bay windows and natural slate roofs



Local stone gable ends



Bay windows breaking the roof line



PLANNING

Tregarthen Hotel
Isles of Scilly

Garden Cottages &
Hotel Refurbishment
Proposed Elevations 1 of 3

Scale: 1:100 @ A1 (1:200 @ A3)

Drawing No: 1156 / P110 rev. B

The Boat Shed, Michael Browning Way
Exeter EX2 8DD
01392 438051 mail@g-a.uk.com

grainge architects



Elevation 1: Proposed Hotel and Garden Cottages Waterside Elevation

Material Key

Roof

Garden cottages - slate

Walls

Garden cottages - white render with granite detailing and granite quoins

Windows and Doors

Garden cottages - painted timber

Hotel refurbishments - powder coated aluminium

External Features

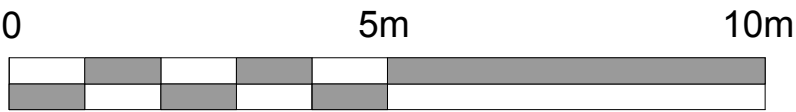
Terrace balustrade - 1.5m glass balustrade

External decking - treated timber

APPROVED
 By Craig Dryden at 3:02 pm, Sep 28, 2018



Elevation 2: Proposed Hotel and Garden Cottages Elevation



Rev	Date	Description	Author
-	20.04.18	planning issue.	le
A	01.05.18	Window changed to reflect client comments. Hipped roof demolished and ridge line extended.	le
B	04.07.18	New downlights and flag pole removed from elevation and note following planners comments	le



Elevation Key (NTS)

PLANNING

Tregarthen Hotel
Isles of Scilly

Garden Cottages &
Hotel Refurbishment
Proposed Elevations 2 of 3

Scale: 1:100 @ A1 (1:200 @ A3)

Drawing No: 1156 / PIII rev. B

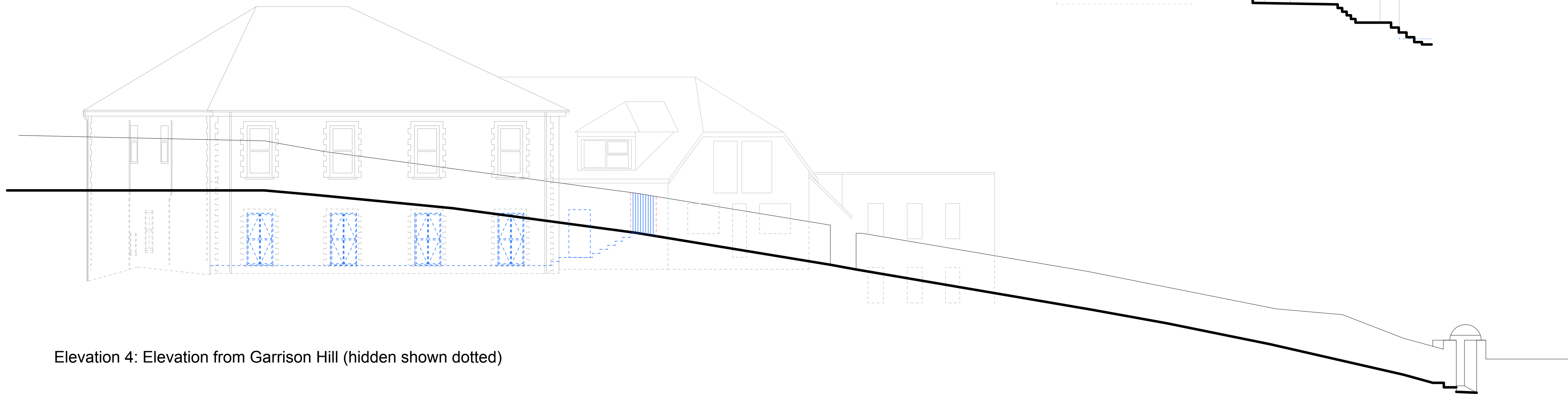
The Boat Shed, Michael Browning Way
Exeter EX2 8DD
01392 438051 mail@g-a.uk.com



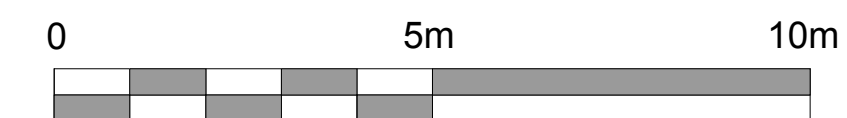
Elevation 3: Elevation through Garrison Hill

Material Key
Roof
Garden cottages - slate
Walls
Garden cottages - white render with granite detailing and granite quoins
Windows and Doors
Garden cottages - painted timber
Hotel refurbishments - powder coated aluminium
External Features
Terrace balustrade - 1.5m glass balustrade
External decking - treated timber

APPROVED
By Craig Dryden at 3:02 pm, Sep 28, 2018



Elevation 4: Elevation from Garrison Hill (hidden shown dotted)



Rev	Date	Description	Author
-	20.04.18	planning issue.	le
A	01.05.18	Window changed,hipped roof demolished and ridge extended to reflect client comments	le
B	04.07.18	New downlights, signage & flag pole removed from elevation and note following planners comments	le



Elevation 5: Elevation from the top of Garrison Hill (hidden behind Garrison Wall)

Existing chimney demolished and new feature window to bedroom



Elevation Key (NTS)

PLANNING

Tregarthen Hotel
Isles of Scilly

Garden Cottages &
Hotel Refurbishment
Proposed Elevations 3 of 3

Scale: 1:100 @ A1 (1:200 @ A3)

Drawing No: 1156 / P112 rev. B

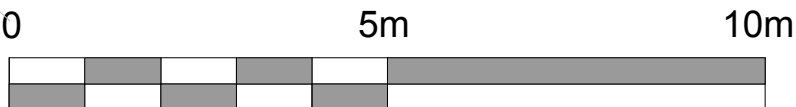
The Boat Shed, Michael Browning Way
Exeter EX2 8DD
01392 438051 mail@g-a.uk.com

grainge architects



Material Key	
Roof	
Garden cottages - slate	
Walls	
Garden cottages - white render with granite detailing and granite quoins	
Windows and Doors	
Garden cottages - painted timber	
Hotel refurbishments - powder coated aluminium	
External Features	
Terrace balustrade - 1.5m glass balustrade	
External decking - treated timber	

APPROVED
By Craig Dryden at 3:02 pm, Sep 28, 2018



Rev	Date	Description	Author
-	16.02.18	Draft phase 2 planning first issue.	et
A	20.04.18	planning issue.	le
B	01.05.18	Window changed to reflect client comments.	le
C	04.07.18	Note regarding new downlights and flag pole removed following planners comments	le

PLANNING

Tregarthen Hotel
Isles of Scilly

Garden Cottages
& Hotel Refurbishment
Proposed First Floor Level

Scale: 1:100 @ A1 (1:200 @ A3)

Drawing No: 1156 / P103 rev. C

The Boat Shed, Michael Browning Way
Exeter EX2 8DD
01392 438051 mail@g-a.uk.com

grainge architects



Material Key

Roof

Garden cottages - slate

Walls

Garden cottages - white render with granite detailing and granite quoins

Windows and Doors

Garden cottages - painted timber

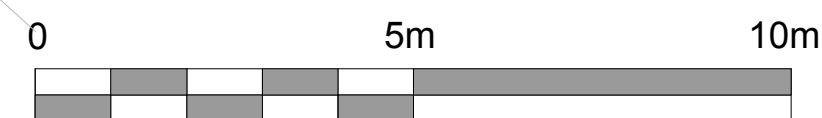
Hotel refurbishments - powder coated aluminium

External Features

Terrace balustrade - 1.5m glass balustrade

External decking - treated timber

APPROVED
By Craig Dryden at 3:02 pm, Sep 28, 2018



Rev	Date	Description	Author
-	16.02.18	Draft phase 2 planning first issue.	et
A	20.04.18	planning issue.	le
B	04.07.18	Note regarding new downlights and flag pole removed following planners comments	le

PLANNING

Tregarthen Hotel
Isles of Scilly

Garden Cottages &
Hotel Refurbishment
Proposed Ground Floor Level

Scale: 1:100 @ A1 (1:200 @ A3)

Drawing No: 1156 / P102 rev. B

The Boat Shed, Michael Browning Way
Exeter EX2 8DD
01392 438051 mail@g-a.uk.com

grainge architects



Material Key

Roof

Garden cottages - slate

Walls

Garden cottages - white render with granite detailing and granite quoins

Windows and Doors

Garden cottages - painted timber

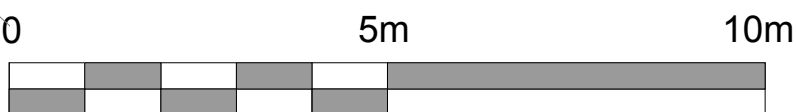
Hotel refurbishments - powder coated aluminium

External Features

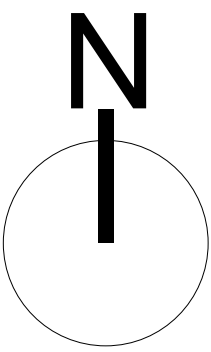
Terrace balustrade - 1.5m glass balustrade

External decking - treated timber

APPROVED
By Craig Dryden at 3:03 pm, Sep 28, 2018



Rev	Date	Description	Author
-	20.04.18	planning issue.	le
A	04.07.18	Note regarding new downlights and flag pole removed following planners comments	le



PLANNING

Tregarthen Hotel
Isles of Scilly

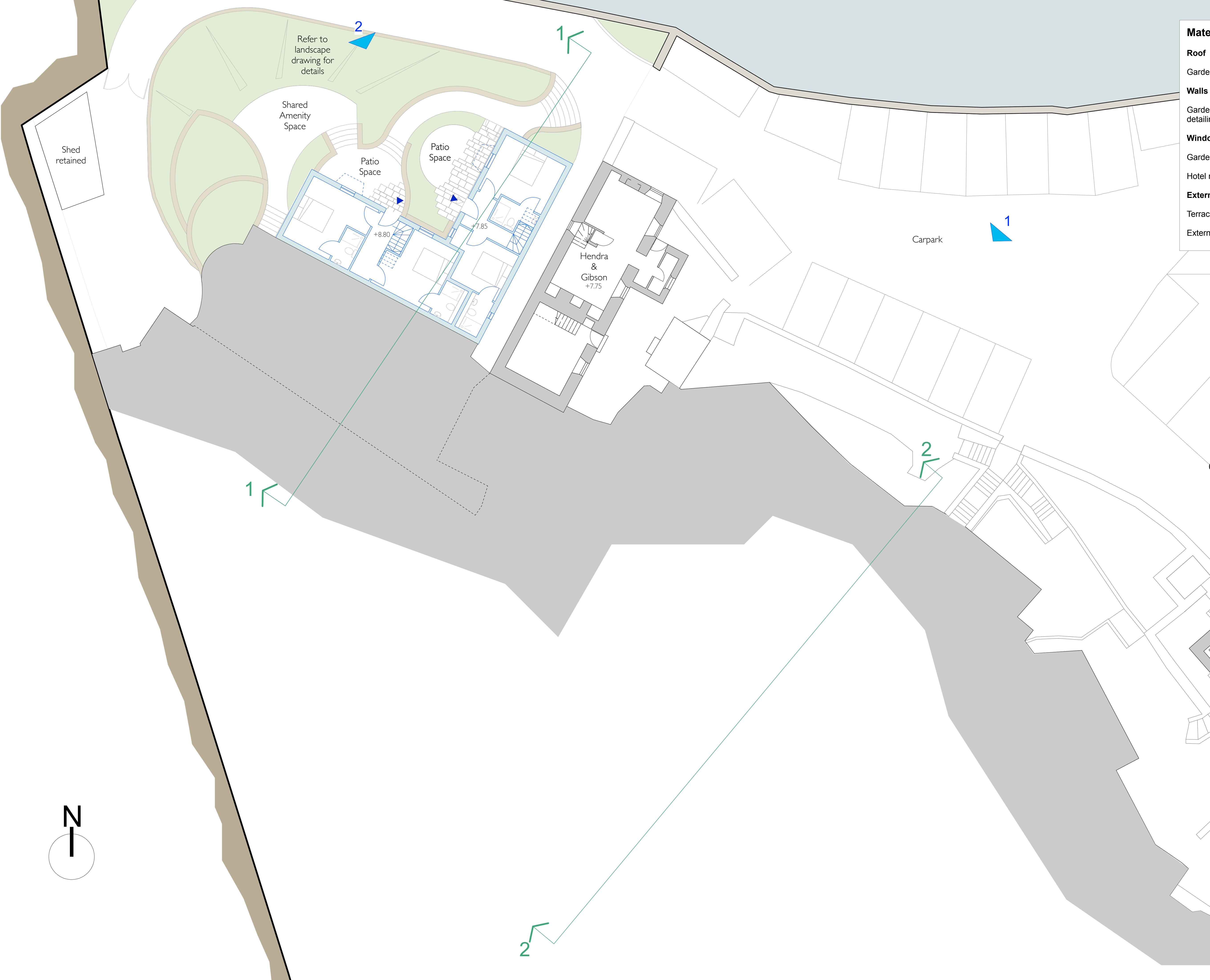
Garden Cottages &
Hotel Refurbishment
Proposed Lower Ground Level

Scale: 1:100 @ A1 (1:200 @ A3)

Drawing No: 1156 / P101 rev. A

The Boat Shed, Michael Browning Way
Exeter EX2 8DD
01392 438051 mail@g-a.uk.com

grainge architects



Material Key

Roof

Garden cottages - slate

Walls

Garden cottages - white render with granite detailing and granite quoins

Windows and Doors

Garden cottages - painted timber

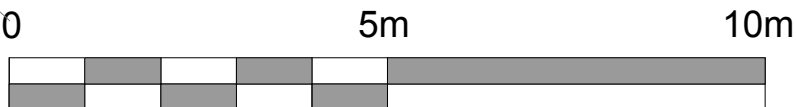
Hotel refurbishments - powder coated aluminium

External Features

Terrace balustrade - 1.5m glass balustrade

External decking - treated timber

APPROVED
By Craig Dryden at 3:03 pm, Sep 28, 2018



Rev	Date	Description	Author
-	16.02.18	Draft phase 2 planning first issue.	et
A	20.04.18	planning issue.	le
B	04.07.18	Note regarding new downlights and flag pole removed following planners comments	le

PLANNING

Tregarthen Hotel
Isles of Scilly

Garden Cottages &
Hotel Refurbishment
Proposed Road Level

Scale: 1:100 @ A1 (1:200 @ A3)

Drawing No: 1156 / P100 rev. B

The Boat Shed, Michael Browning Way
Exeter EX2 8DD
01392 438051 mail@g-a.uk.com



Material Key

Roof

Garden cottages - slate

Walls

Garden cottages - white render with granite detailing and granite quoins

Windows and Doors

Garden cottages - painted timber

Hotel refurbishments - powder coated aluminium

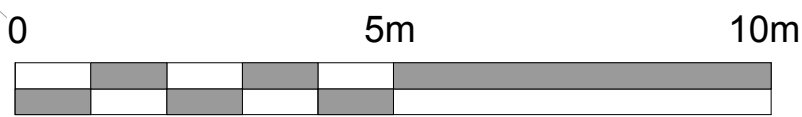
External Features

Terrace balustrade - 1.5m glass balustrade

External decking - treated timber

APPROVED

By Craig Dryden at 3:03 pm, Sep 28, 2018



Rev	Date	Description	Author
-	20.04.18	planning issue.	le
A	01.05.18	Hipped roof removed, existing ridge extended.	le
B	04.07.18	Note regarding new downlights and flag pole removed following planners comments	le

PLANNING

Tregarthen Hotel
Isles of Scilly

Garden Cottages &
Hotel Refurbishment
Proposed Roof Level

Scale: 1:100 @ A1 (1:200 @ A3)

Drawing No: 1156 / P104 rev. B

The Boat Shed, Michael Browning Way
Exeter EX2 8DD
01392 438051 mail@g-a.uk.com