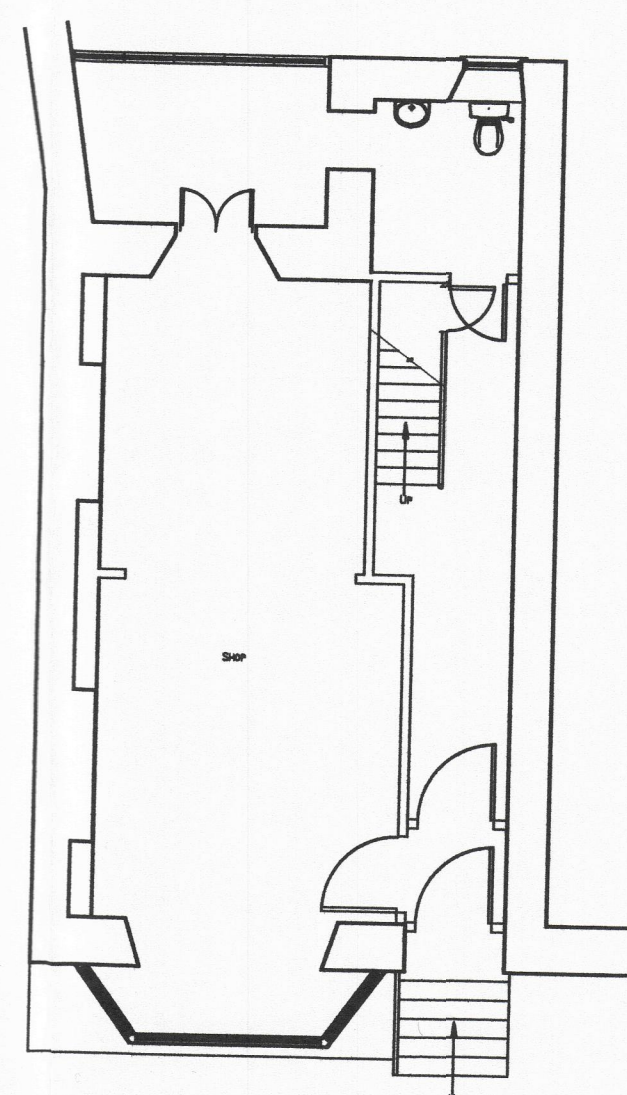


19 / 043

RECEIVED BY THE
PLANNING DEPARTMENT
02 AUG 2019



Existing Plan



North Elevation



South Elevation



West Elevation

*Calaco Jacks
The Bank
St. Mary's
Isles of Scilly*

Existing

Mr R Pender

*N.B.-No measurements to be scaled from this drawing unless specified. Whilst all efforts are made to insure accurate measurements Any discrepancies should be reported immediately to the architect.
© Copyright Paul Osborne*

Date - August 2012
Amended - June 2019
Scale - 1:100

PAUL OSBORNE
CARN THOMAS
ST. MARY'S, ISLES of SCILLY.
TR21 0PT Tel (01720) 423377
Email: paul@sailscilly.com

CJ-EB-2b