



*butt jointed 150 x 20 mm timber rainscreen and edging timbers  
Stainless steel nail fixings*

*powder coated aluminium  
fixed window*

*powder coated aluminium  
top hung window with opaque glazing*

*recesses / boundary junctions in  
powder coated aluminium flashing*

**RECEIVED**  
By A King at 1:38 pm, Mar 04, 2021

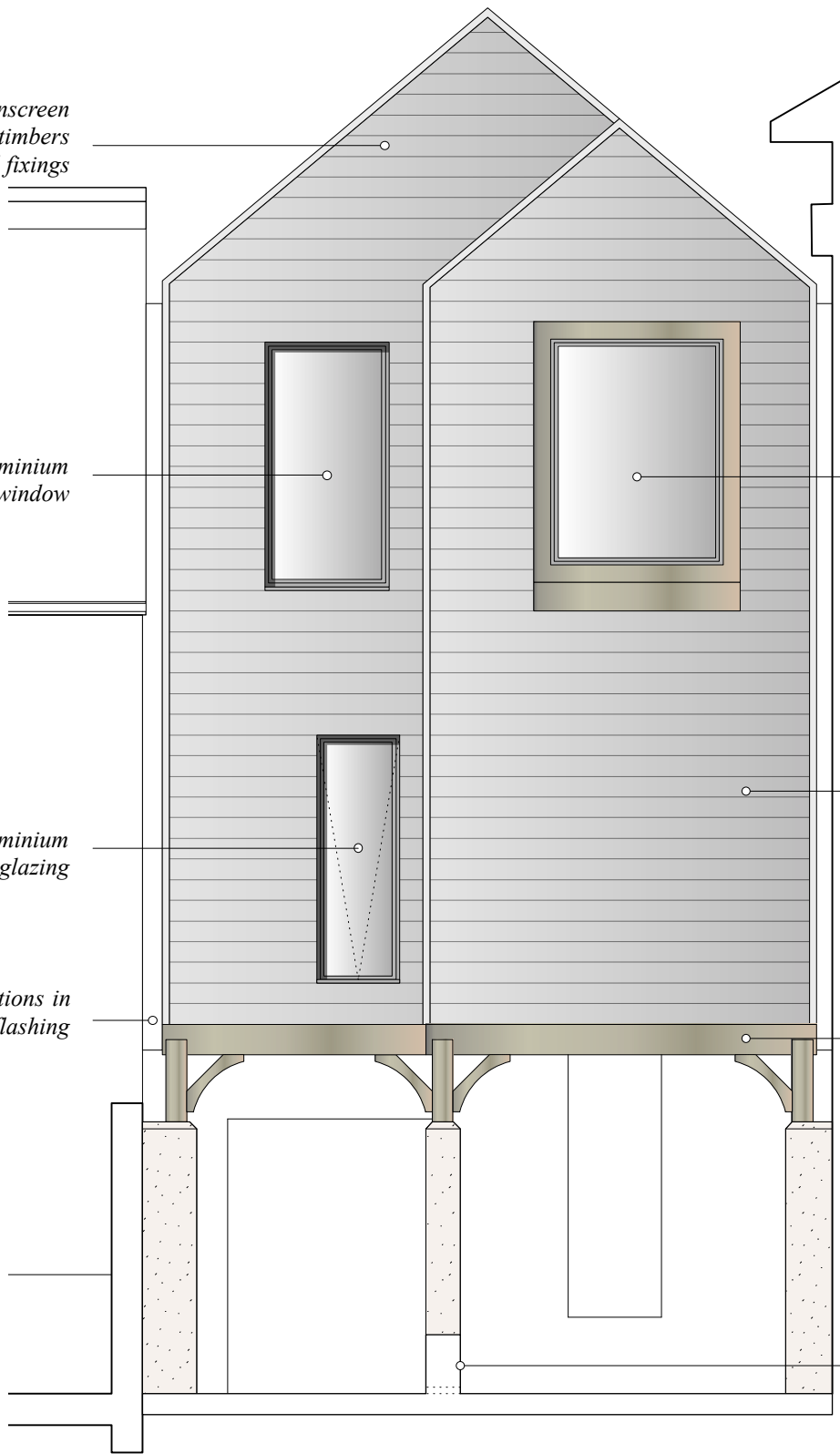
*protruding timber window. Fixed powder coated aluminium  
Framing in green oak*

*butt jointed 150 x 20 mm timber rainscreen and edging timbers  
Stainless steel nail fixings*

*first floor structure in green oak*

*ground floor columns in reinforced blockwork  
with lime render to match existing house*

*low level blockwork wall with lime render  
one way flow valves at increments*



REAR ELEVATION

**PARK VIEW 2**  
LOWER STRAND, ST MARY'S  
  
**REAR  
ELEVATIONS**  
  
DRW NO. PV08  
DATE - FEB 2021  
SCALE - 1:50 @ A3