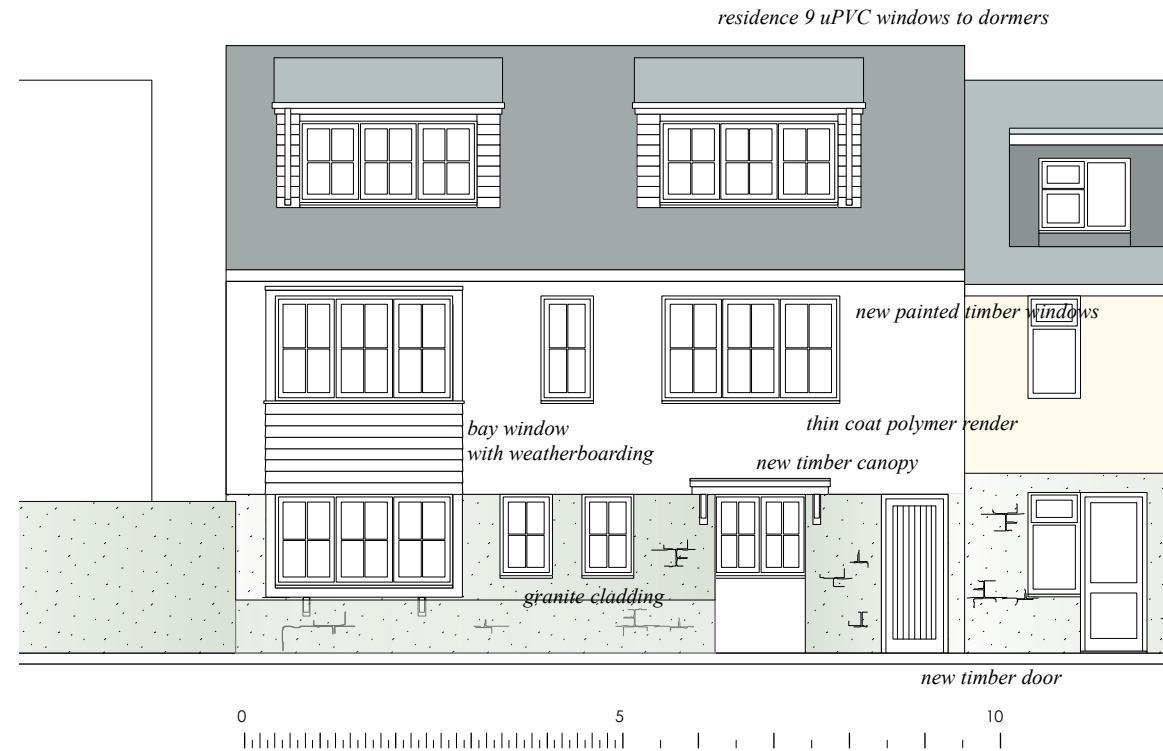
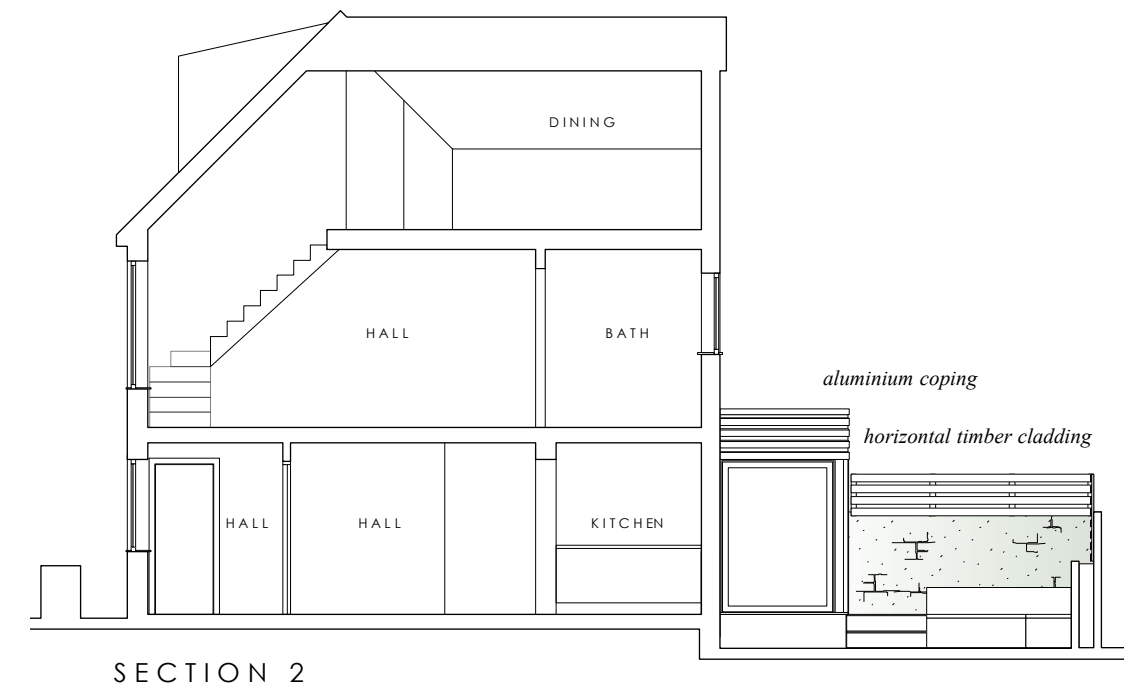
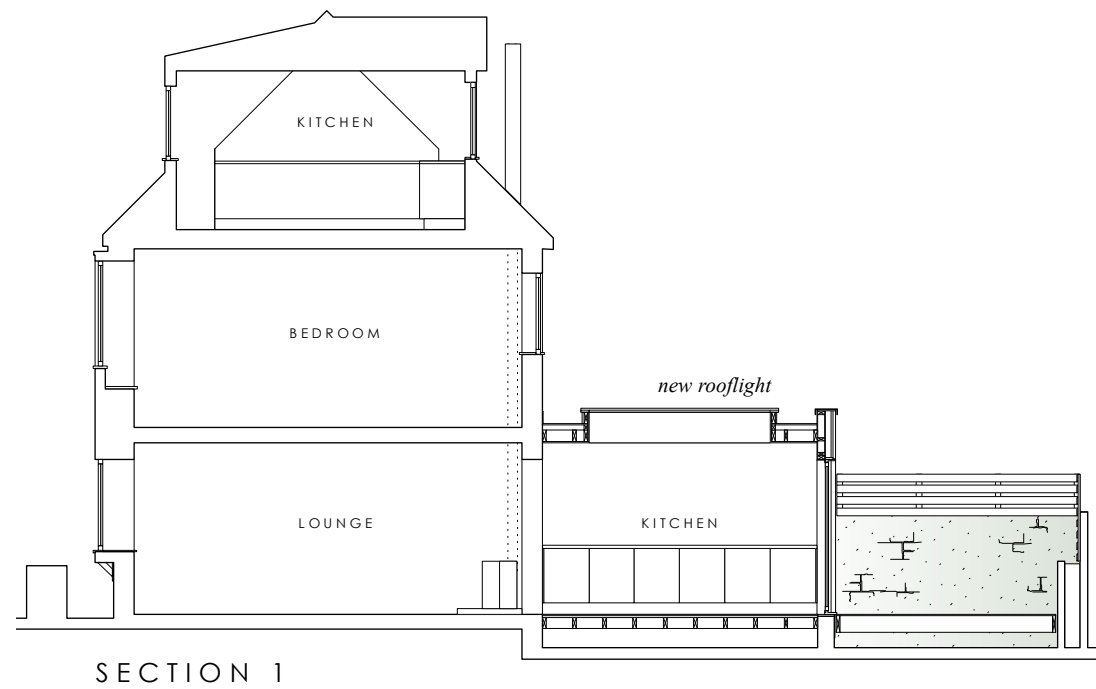


FRONT ELEVATION



REAR ELEVATION



DESIGN AND ACCESS STATEMENT. PART 4

The proposals will see a complete overhaul of the front elevation. The existing windows will be removed and replaced with new timber windows in a 4 panel configuration. The large hallway window will be replaced with 2 smaller openings and the Living room and bedroom 1 windows will be formed into a new minimally projecting bay with horizontal cladding in between. The ground floor walls will be clad in natural granite cladding to match the neighbours on either side and the upper floor will be re-rendered. A small projecting timber canopy will sit above the reduced width entry porch. This reconfiguration of the facade will help to reduce the dated proportions of the building and break up the monotony of the window arrangement. The second floor windows to the dormers will be in uPVC. These will be 'Residence 9' conservation windows in the same detail as the timber windows below. This decision has been taken for maintenance reasons, but with the view to maintaining a more sympathetic and cohesive appearance.

RECEIVED
By Tom Anderton at 12:32 pm, Nov 25, 2020

AURIGA

PORHCRESSA RD
ST MARY'S TR210JL

PROPOSED
ELEVATIONS
+ SECTIONS

DRW. NO. AU05
DATE - NOV 2020
SCALE - 1:100 @ A3