



SP	Easting	Northing	Elevation
SP1	91.4971	16.0150	0.000
SP2	91.4971	16.0081	0.000
SP3	91.4972	16.0077	0.000
SP4	91.5520	16.0043	0.000
SP5	91.5547	16.0085	0.000
SP6	91.4960	16.0115	0.000
SP7	91.4940	16.0117	0.000
SP8	91.4966	16.0165	0.000
SP9	91.4946	16.0167	0.000
SP10	91.4937	16.0187	0.000
SP11	91.4937	16.0207	0.000
SP12	91.5011	16.0208	0.000
SP13	91.4970	16.0246	0.000

**HAZARDS WARNING**

- 1! PUBLIC ACCESS TO BEACHES
- 2! SOFT AND UNSTABLE MATERIALS
- 3! UNKNOWN LOCATION AND DEPTH OF TELECOMMUNICATION CABLES

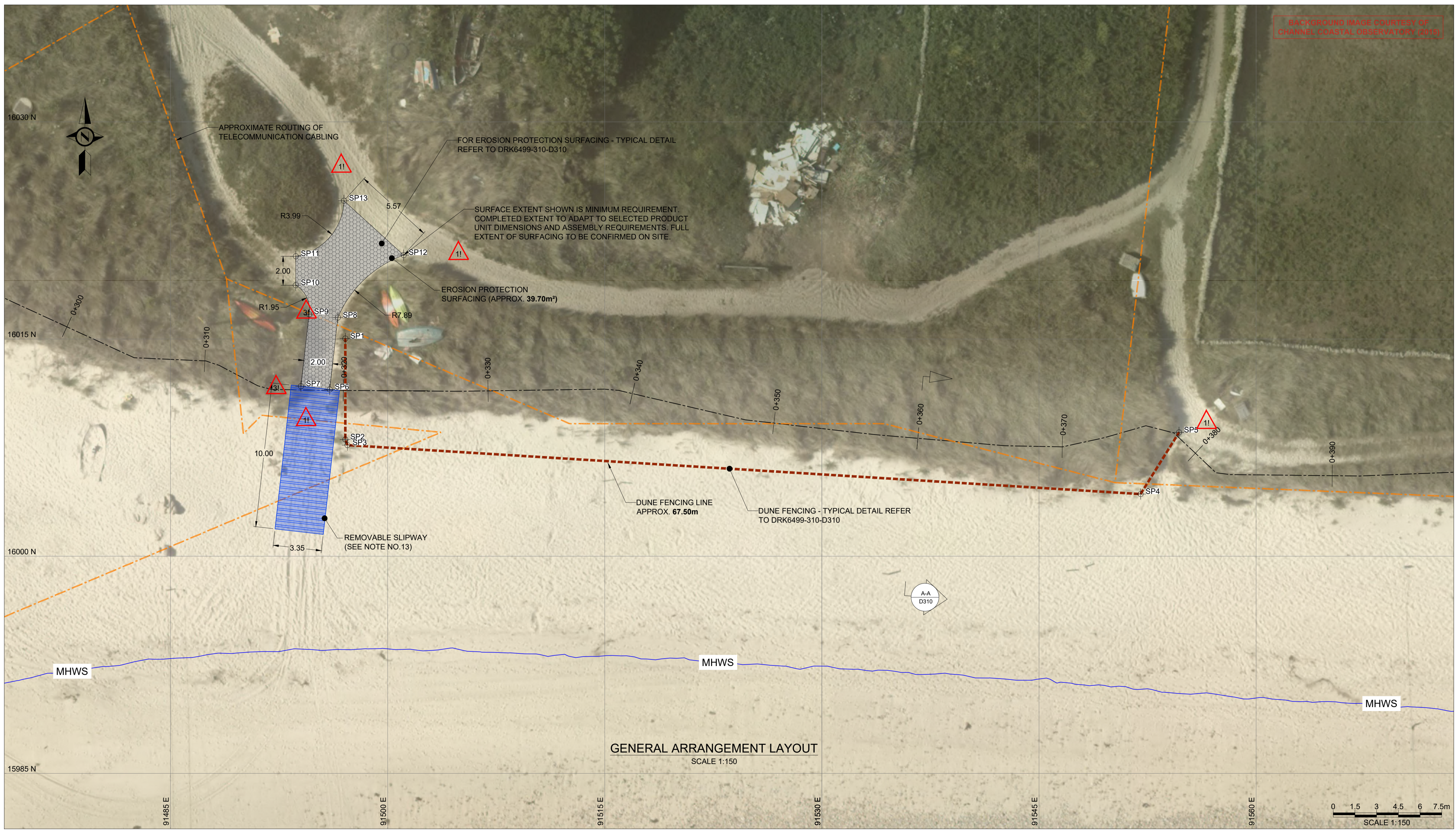
HR Wallingford has prepared this document under the terms of the contract between them and their client, for the exclusive use of that client. HR Wallingford accepts no liability for any use of this document other than by their client and then only for the purposes for which it was prepared. No warranty is given for any third party data included in this document.



- NOTES:**
- ALL DIMENSIONS ARE IN METRES UNLESS STATED OTHERWISE.
  - HORIZONTAL DATUM IS REFERENCED TO OSGB 1936 BRITISH NATIONAL GRID.
  - VERTICAL DATUM IS IN METRES. ORDNANCE DATUM.
  - SETTING OUT POINTS TO BE AGREED FOLLOWING DETAILED SURVEYS.
  - ALL LEVELS TO BE CONFIRMED FOLLOWING ON SITE SURVEY.
  - BACKGROUND IMAGES REPRODUCED FROM BING MAPS, © 2021 MICROSOFT AND CHANNEL COASTAL OBSERVATORY (2015).
  - ELECTRICAL CABLE ROUTING INFORMATION SUPPLIED BY WESTERN POWER DISTRIBUTION. TELEPHONE CABLE ROUTING SUPPLIED BY OPENREACH.
  - CABLE ROUTES AND DEPTHS SHOWN ARE APPROXIMATE ONLY. CONTRACTOR TO LOCATE AND PROTECT RELEVANT CABLING PRIOR TO WORKS.
  - EROSION PROTECTION SURFACING TO BE PROPRIETARY SURFACING PRODUCT, X-GRID BY KEDEL OR SIMILAR APPROVED.  
[HTTPS://WWW.RECYCLEDPLASTICBUILDINGMATERIALS.CO.UK/ DRAINAGE-AND-GROUND-REINFORCEMENT.HTML](https://www.recycledplasticbuildingmaterials.co.uk/drainage-and-ground-reinforcement.html)
  - FOR GENERAL NOTES REFER TO DRAWING No. DKR6499-000-D102.
  - FOR TYPICAL SECTIONS REFER TO DRAWING No. DKR6499-310-D310.
  - REMOVABLE SLIPWAY BY TRACKWAY OR SIMILAR APPROVED PRODUCT  
[HTTPS://FAUNTRACKWAY.CO.UK/ACCESS/BOAT-RAMP-KIT](https://fauntrackway.co.uk/access/boat-ramp-kit). TO BE SUPPLIED WITH PUSHBAR AND STAPS.

**RECEIVED**  
By Lisa Walton at 4:43 pm, Oct 31, 2022

- LEGEND:**
- EROSION PROTECTION SURFACING AREA
  - DUNE FENCING
  - REMOVABLE SLIPWAY
  - MHWS=2.77 mOD
  - TELECOMMUNICATIONS CABLES
  - ELECTRICITY CABLES



01	ISSUED FOR REVIEW	PGU	AGC	AUO	10 AUG 22
REV	DRAWING STATUS	DRN	APPR	AUTH	DATE

CLIENT:  
**THE COUNCIL OF THE ISLES OF SCILLY**

MARINE CONSULTANT:  
**HR Wallingford**  
Howbery Park, Wallingford  
Oxfordshire OX10 8BA  
United Kingdom  
Tel: +44(0)1491 835381  
Fax: +44(0)1491 832233  
[www.hrwallingford.com](http://www.hrwallingford.com)

PROJECT:  
**ISLES OF SCILLY  
DESIGN SERVICES FOR OFF ISLANDS  
COASTAL EROSION DEFENCE AND  
DUNE MANAGEMENT**

DRAWING TITLE:  
**ST. MARTIN'S - 26&27  
GENERAL ARRANGEMENT LAYOUT**

SCALE:  
**AS SHOWN**

SHEET SIZE:  
**A1**

DRAWING No:  
**DKR6499-310-D110**

REV:  
**01**

09/08/22 AGC \\mva\uk\local\projects\live\dkr6499-310-D110 [01\_2]\_General Arrangement-St.Martin's 26&27\_00\_01.dwg