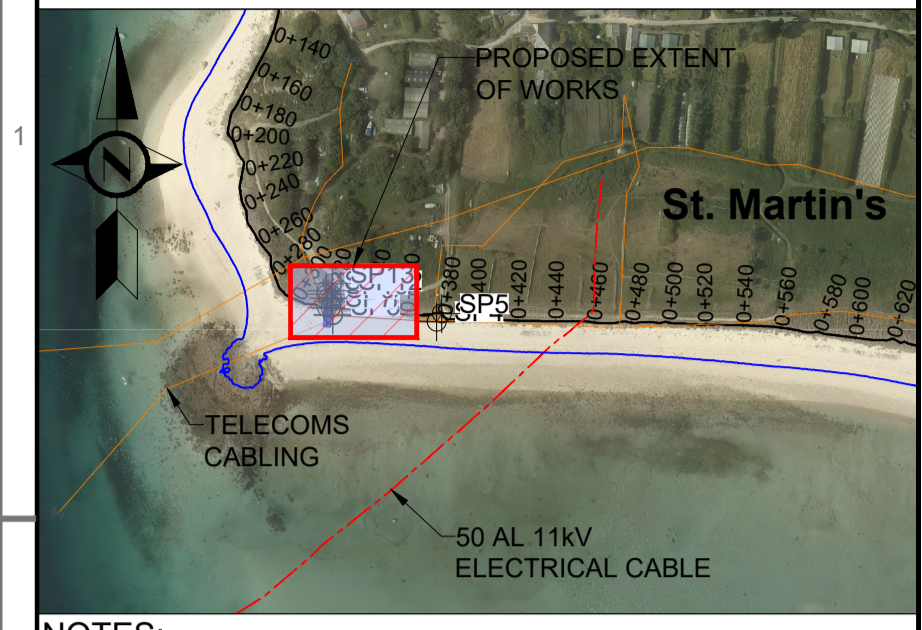


HR Wallingford has prepared this document under the terms of the contract between them and their client, for the exclusive use of that client. HR Wallingford accepts no liability for any use of this document other than by their client and then only for the purposes for which it was prepared. No warranty is given for any third party data included in this document.

KEY PLAN:



NOTES:

1. ALL DIMENSIONS ARE IN METRES UNLESS STATED OTHERWISE.
2. HORIZONTAL DATUM IS REFERENCED TO OSGB 1936 BRITISH NATIONAL GRID.
3. VERTICAL DATUM IS IN METRES, ORDNANCE DATUM.
4. SETTING OUT POINTS TO BE AGREED FOLLOWING DETAILED SURVEYS.
5. ALL LEVELS TO BE CONFIRMED FOLLOWING ON SITE SURVEY.
6. BACKGROUND IMAGE REPRODUCED FROM BING MAPS, © 2021 MICROSOFT.
7. CABLE ROUTES AND DEPTHS SHOWN ARE APPROXIMATE ONLY. CONTRACTOR TO LOCATE AND PROTECT RELEVANT CABLING PRIOR TO WORKS.
8. ELECTRICAL CABLE ROUTING INFORMATION SUPPLIED BY WESTERN POWER DISTRIBUTION. TELEPHONE CABLE ROUTING SUPPLIED BY OPENREACH.
9. EROSION PROTECTION SURFACING TO BE PROPRIETARY SURFACING PRODUCT, X-GRID BY KEDEL OR SIMILAR APPROVED. [HTTPS://WWW.RECYCLEDPLASTICBUILDINGMATERIALS.CO.UK/ DRAINAGE-AND-GROUND-REINFORCEMENT.HTML](https://www.recycledplasticbuildingmaterials.co.uk/drainage-and-ground-reinforcement.html)
10. SURFACING CONSTRUCTION DETAIL AND GEOGRID TO BE CONFIRMED BY SELECTED SUPPLIER.
11. DUNE FENCING TO BE SEMI PERMEABLE WOODEN FENCING APPROVED BY ENGINEER.
12. DUNE FENCING TO BE INSTALLED AS PER SUPPLIER'S REQUIREMENTS.
13. FOR GENERAL NOTES REFER TO DRAWING No. DKR6499-000-D102.
14. FOR GENERAL ARRANGEMENT LAYOUT REFER TO DRAWING No. DKR6499-310-D110.
15. REMOVABLE SLIPWAY BY TRACKWAY OR SIMILAR APPROVED PRODUCT. [HTTPS://FAUNTRACKWAY.CO.UK/ACCESS/BOAT-RAMP-KIT](https://fauntrackway.co.uk/access/boat-ramp-kit). TO BE SUPPLIED WITH PUSHBAR AND STAPS.

TIDE LEVELS	
mOD	
HAT	+3.40m
MHWS	+2.77m
MHWN	+1.44m
MLWN	-0.87m
MLWS	-2.18m
LAT	-2.82m

RECEIVED
By Lisa Walton at 4:44 pm, Oct 31, 2022

01	ISSUED FOR REVIEW	PGU	AGC	AUO	10 AUG 22
REV	DRAWING STATUS	DRN	APPR	AUTH	DATE

CLIENT:
THE COUNCIL OF THE ISLES OF SCILLY

MARINE CONSULTANT:
HR Wallingford
Howbery Park, Wallingford
Oxfordshire OX10 8BA
United Kingdom
Tel: +44(0)1491 835381
Fax: +44(0)1491 832233

PROJECT:
**ISLES OF SCILLY
DESIGN SERVICES FOR OFF ISLANDS
COASTAL EROSION DEFENCE AND
DUNE MANAGEMENT**

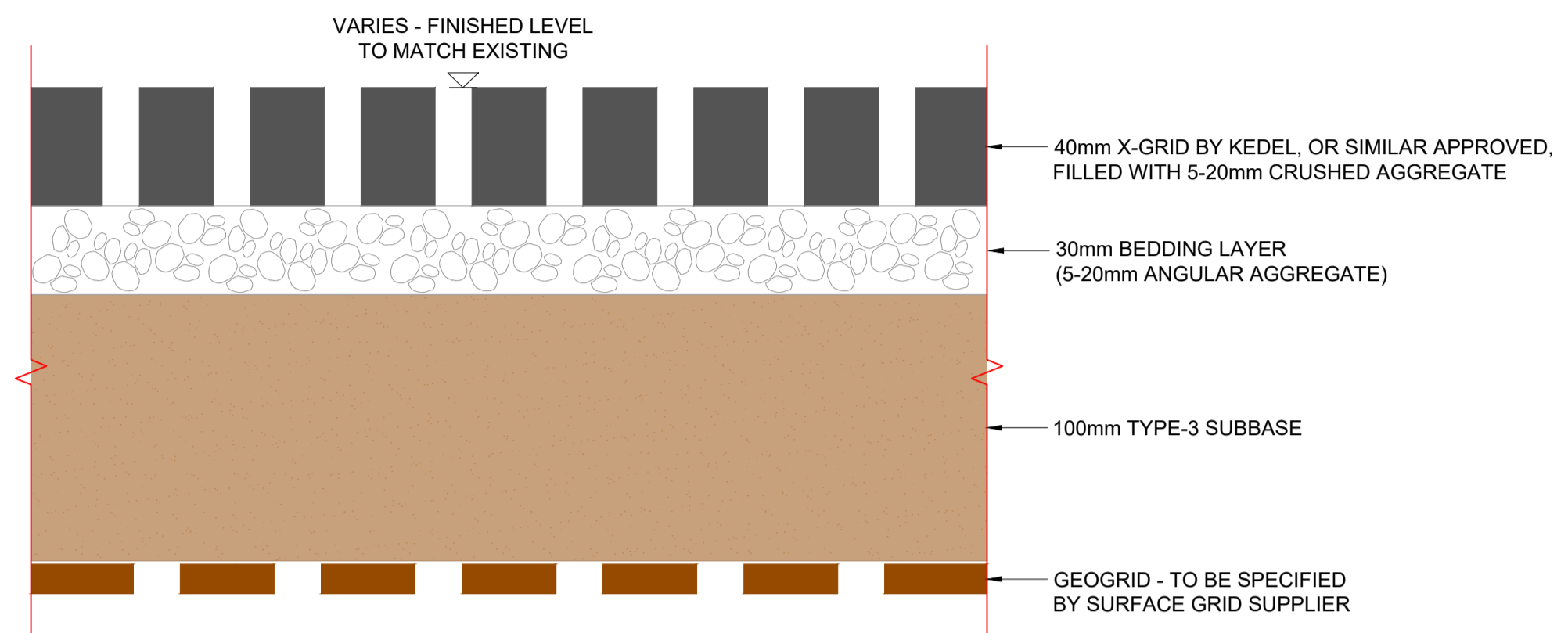
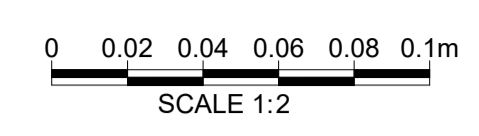
DRAWING TITLE:
**ST. MARTIN'S - 26&27
SECTIONS AND TYPICAL DETAILS**

SCALE:
AS SHOWN

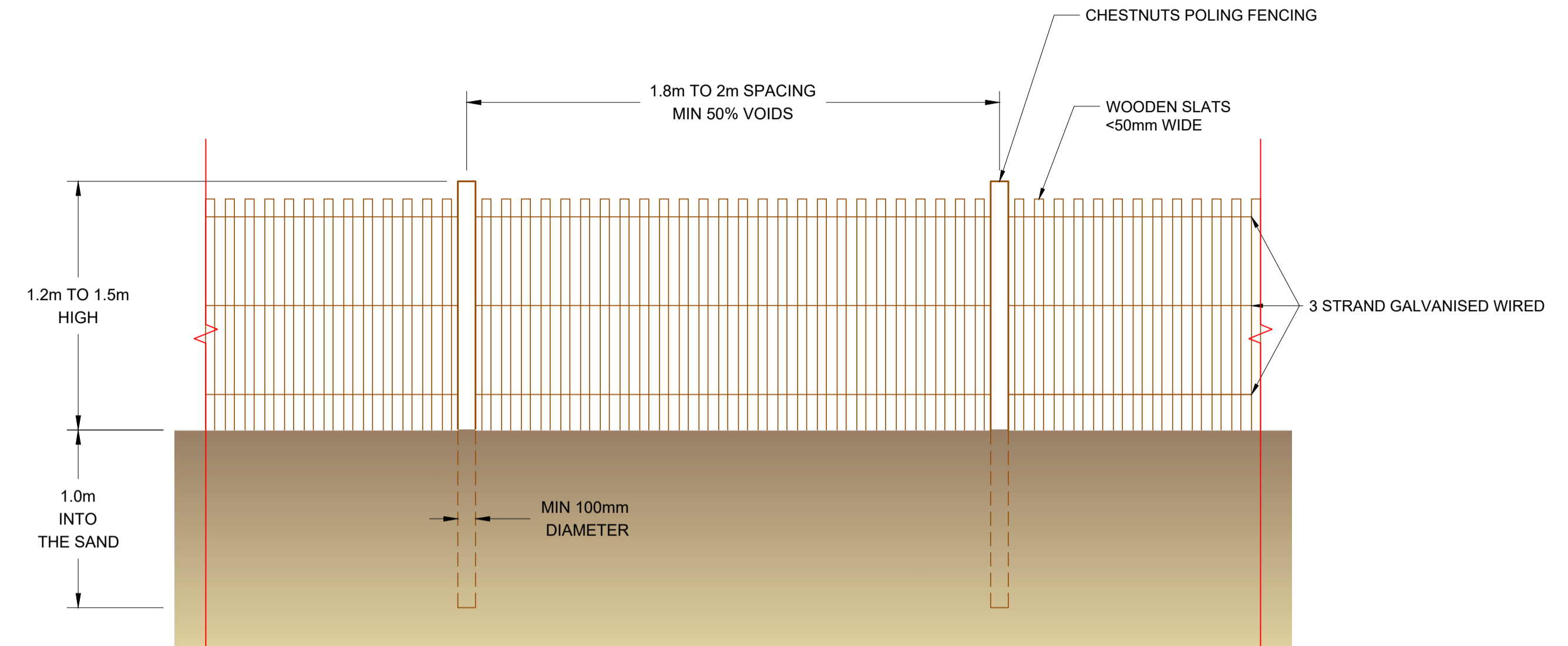
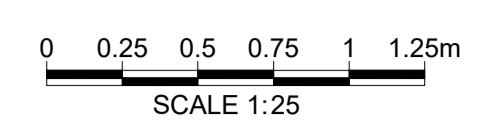
SHEET SIZE:
A1

DRAWING No:
DKR6499-300-D310

REV:
01



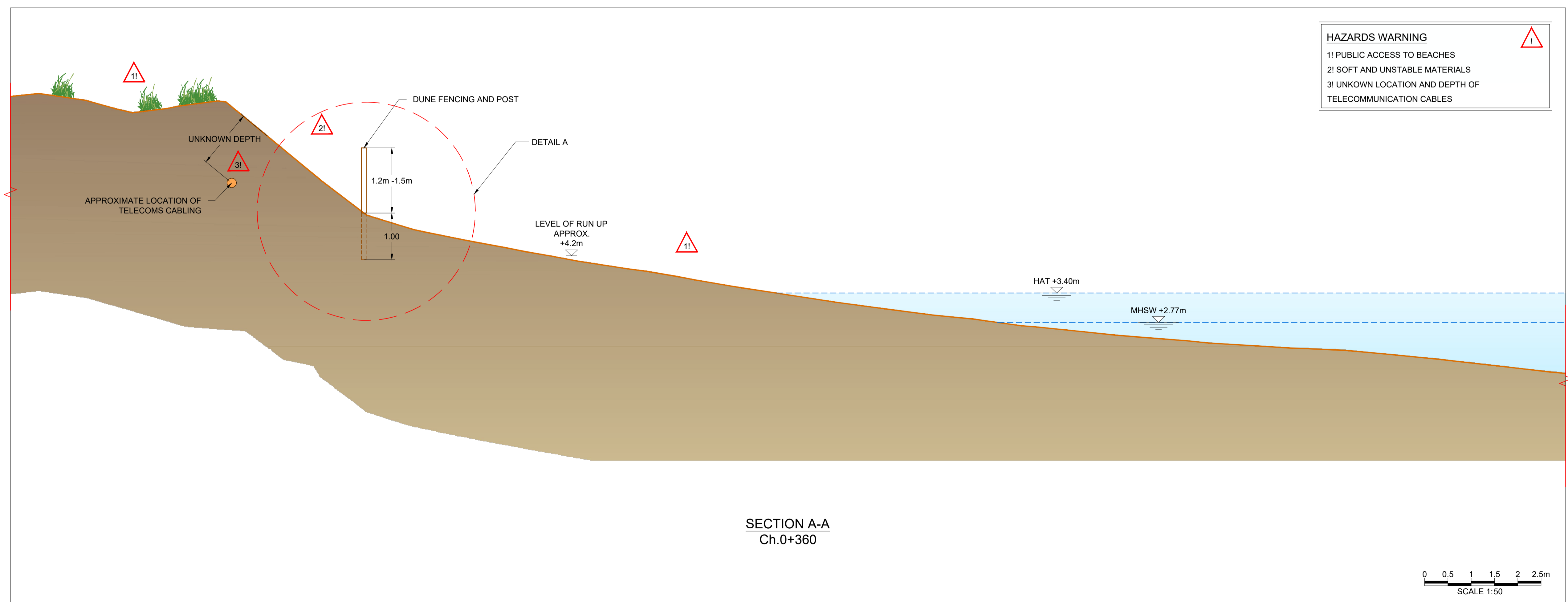
EROSION PROTECTION SURFACING - TYPICAL DETAIL
SCALE 1:2



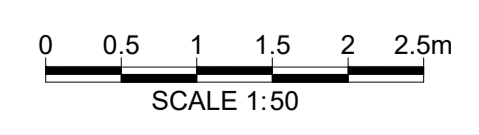
DETAIL A - TYPICAL DUNE FENCING DETAIL
SCALE 1:25

HAZARDS WARNING

1! PUBLIC ACCESS TO BEACHES
2! SOFT AND UNSTABLE MATERIALS
3! UNKNOWN LOCATION AND DEPTH OF TELECOMMUNICATION CABLES



SECTION A-A
Ch.0+360



I:\m\uk\local\projects\live\dkr6499-310-D110 [01_2]_General Arrangement-St.Martin's
 26&27_00_01.dwg
 AGC
 09/08/22