

Building Materials

Roof: Grey fibre-cement slates
 External Walls: Stone grey composite re-cycled cladding to match house
 Windows and doors: Anthracite grey upvc or aluminium
 Rainwater goods: Colour-coated steel Lindab gutters and downpipes



Cladco Stone Grey composite cladding to match house

RECEIVED

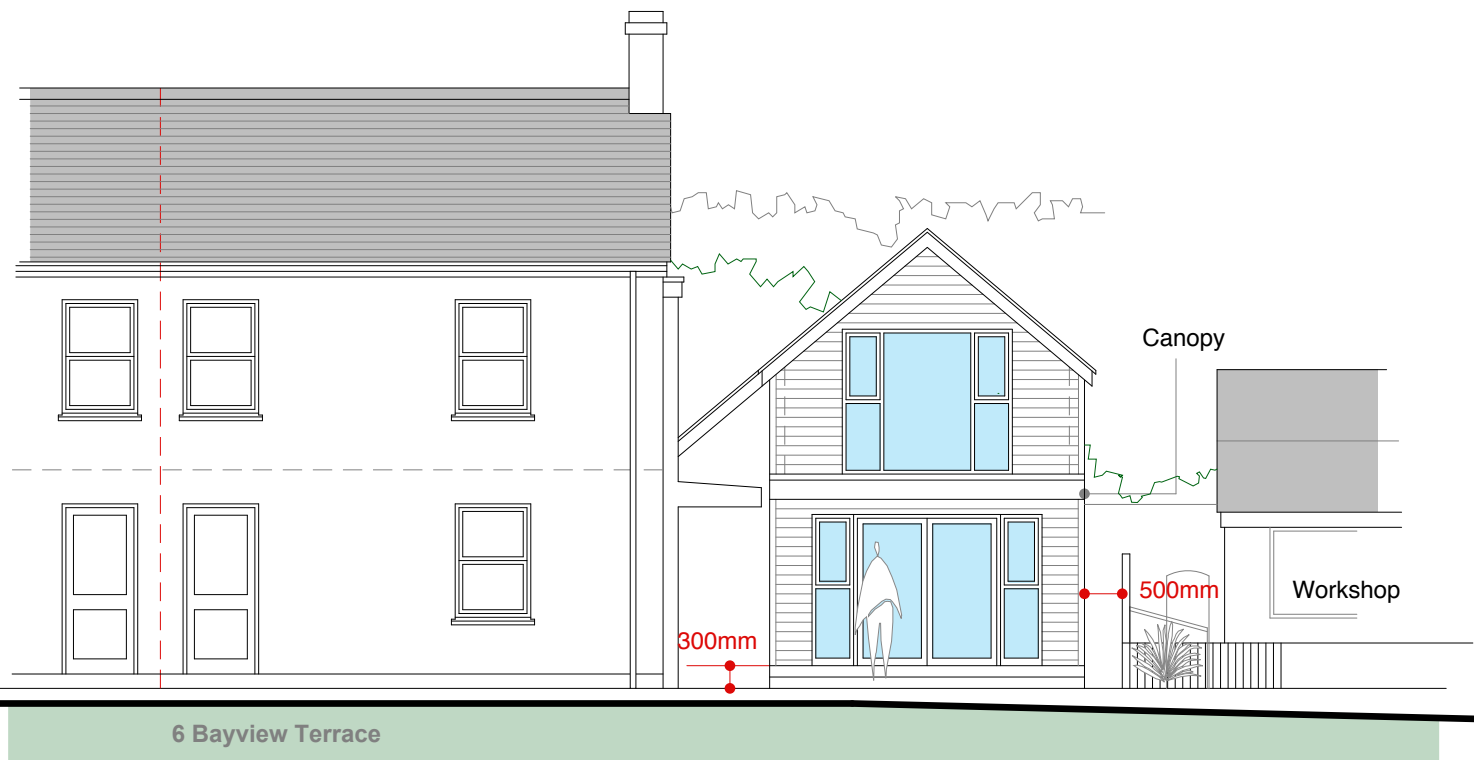
By Lisa Walton at 9:53 am, Dec 01, 2022

APPROVED

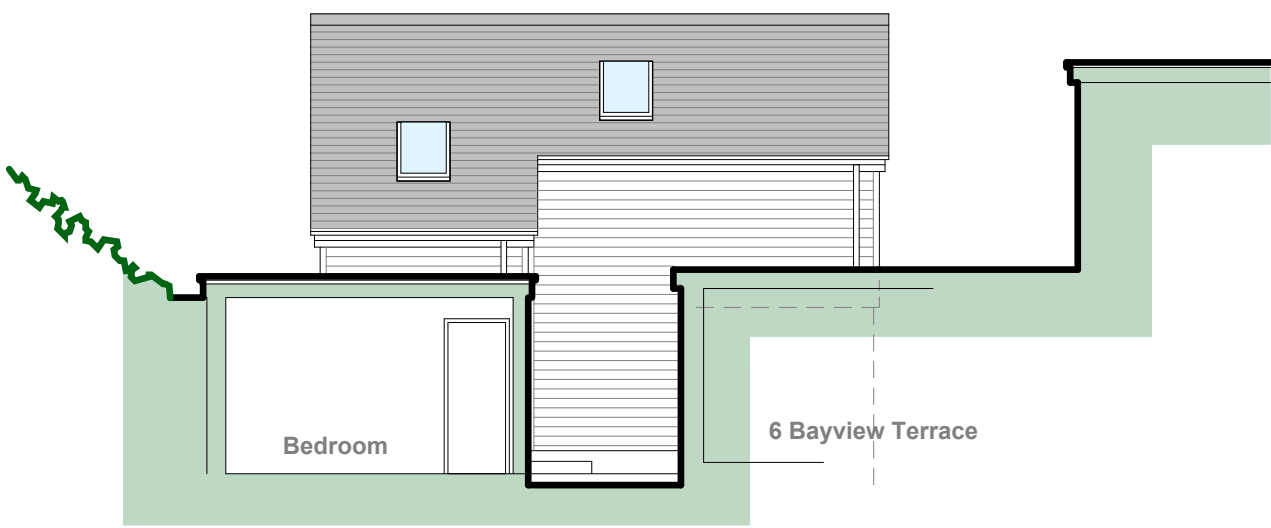
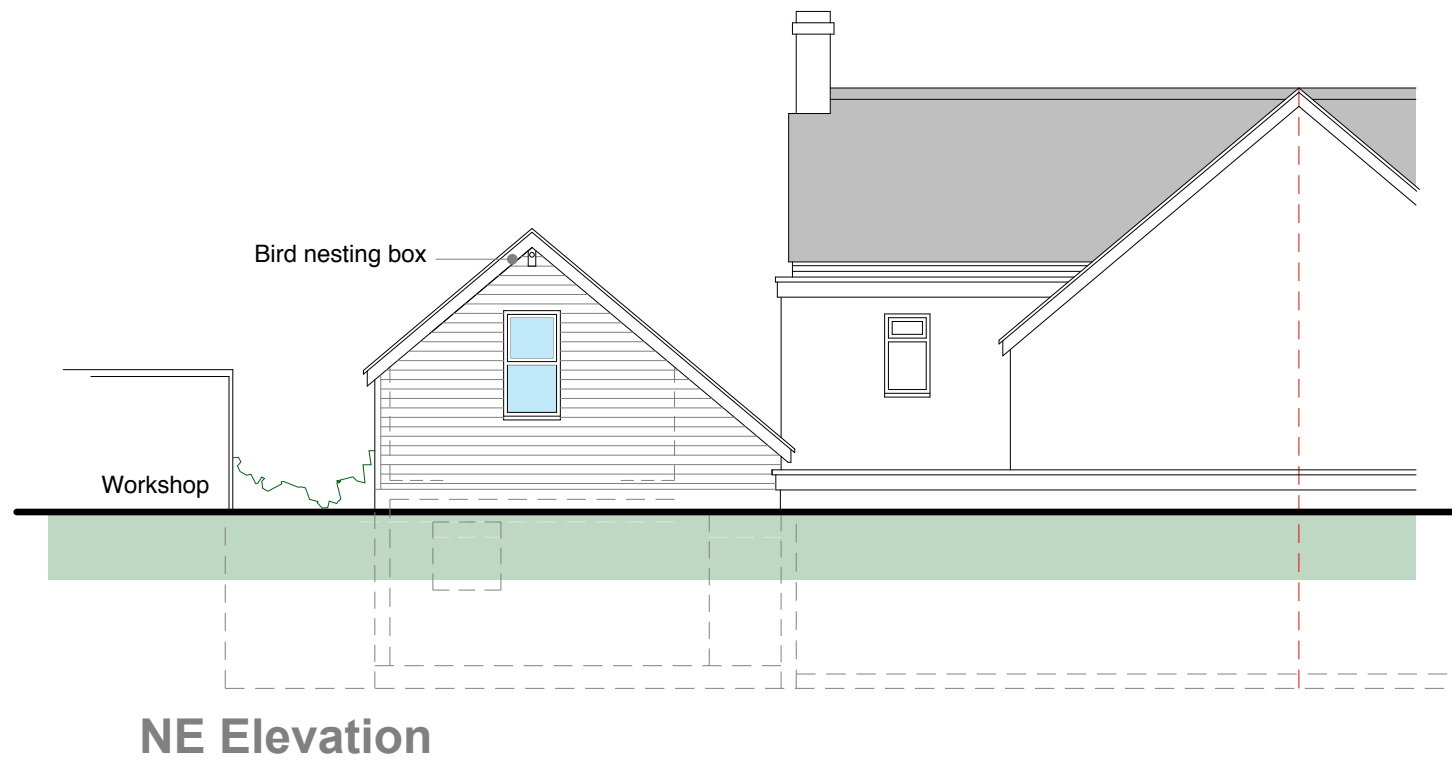
By Lisa Walton at 12:31 pm, Dec 15, 2022

AMENDMENTS

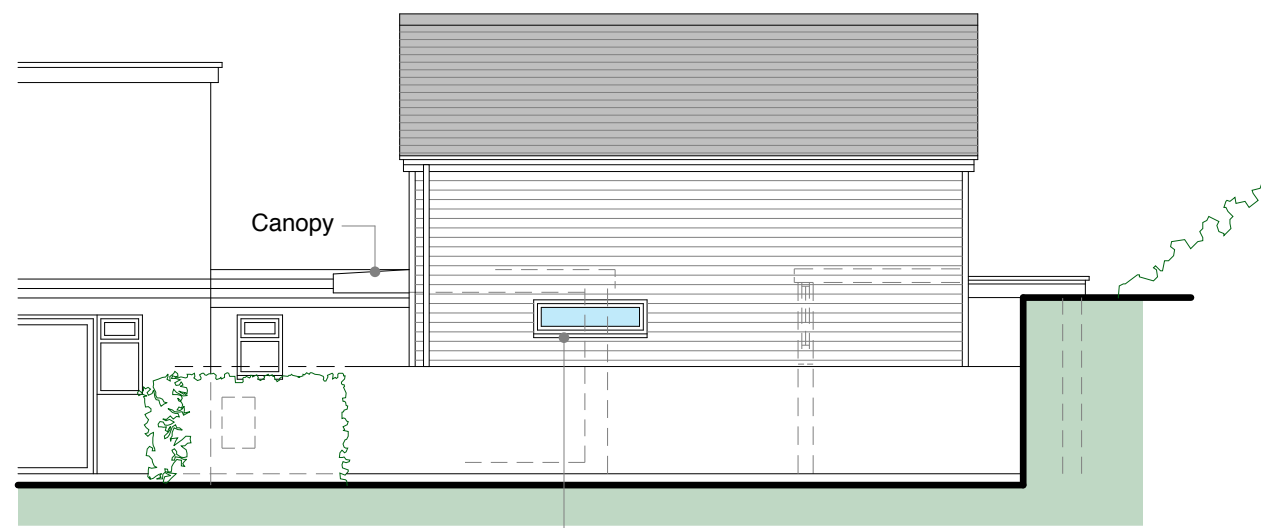
- A Two-storey wing repositioned further from boundary wall MRB 101122
- B Proximity of neighbour's outbuilding to chalet corrected MRB 251122



SW Elevation



NW Elevation



SE Elevation

PLANNING

Studio St Ives
 4 Gabriel Street
 St Ives
 TR26 2LU
 01736 798427

MIKE BRADBURY DESIGN

PZ

JOB
Reconstruction of Chalet at 6 Bayview Terrace Portmellon St. Mary's Isles of Scilly for Mike Green & Hannah Barclay

TITLE
Proposed Elevations

DRWG. NO. REVISION
2018-P05 B

SCALE DATE
1:50 @ A1 1:100 @ A3 May 2022

OFFICE USE / PRE-ISSUE