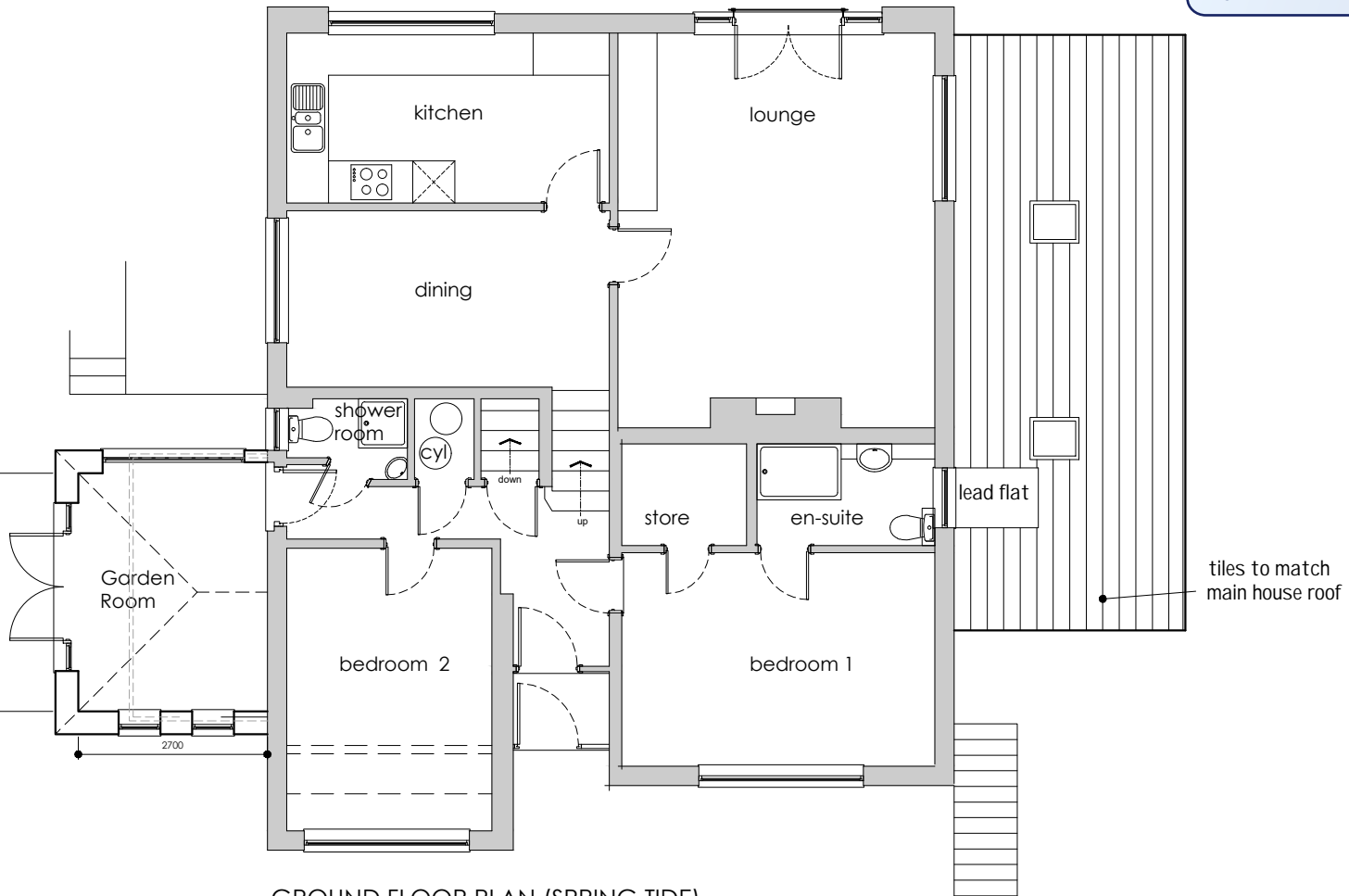
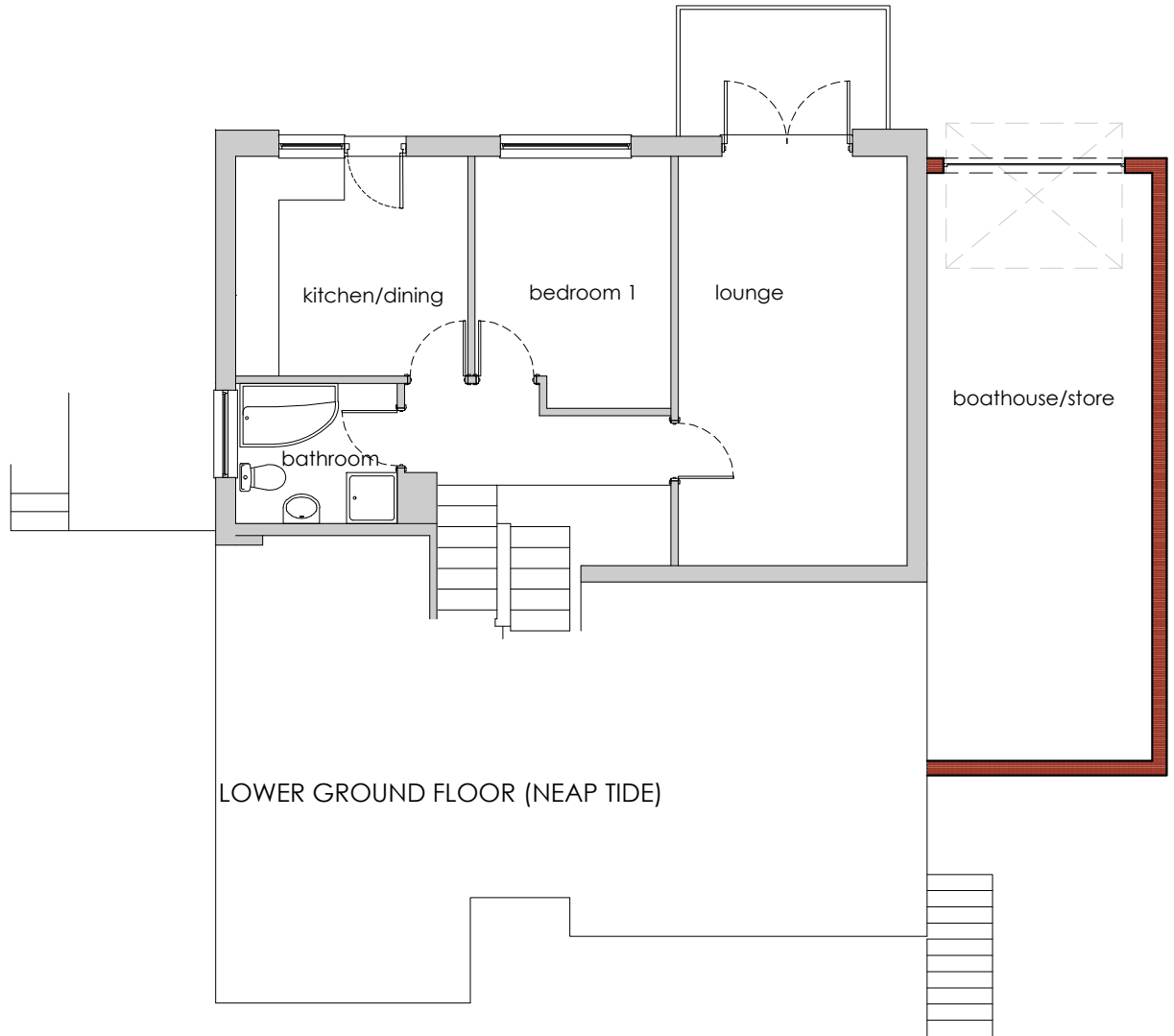


RECEIVED
By Lisa Walton at 6:08 pm, Apr 11, 2023



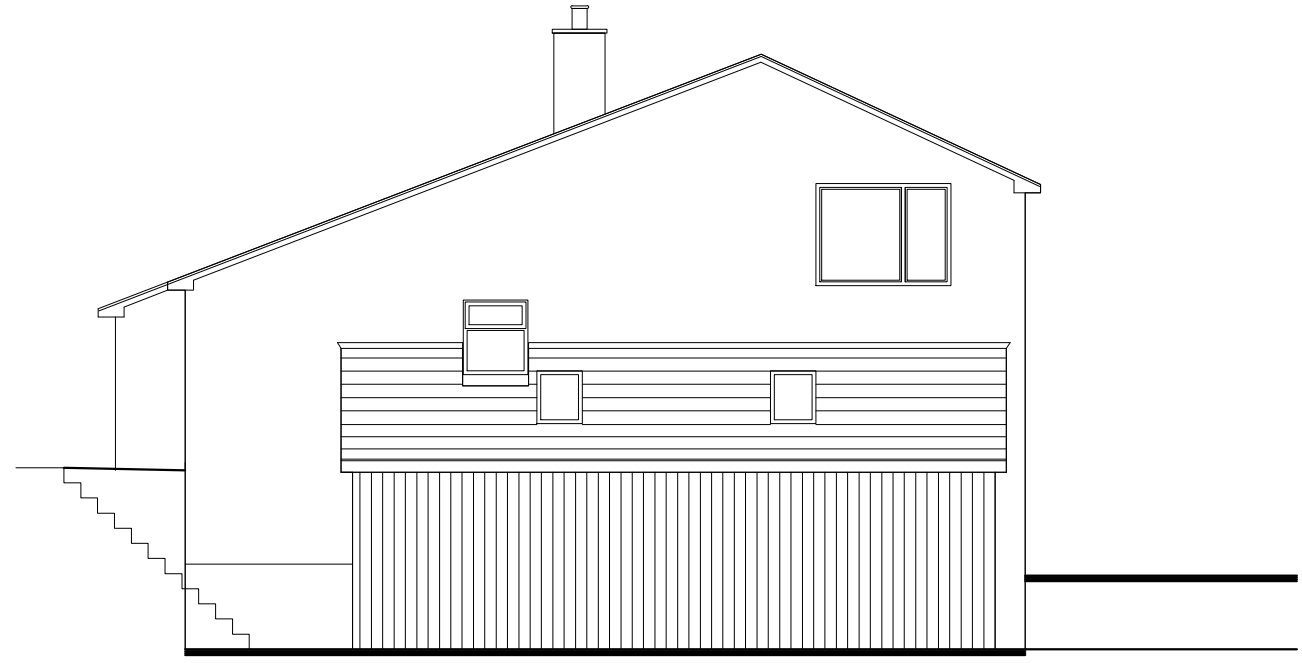
GROUND FLOOR PLAN (SPRING TIDE)



LOWER GROUND FLOOR (NEAP TIDE)



NORTH WEST ELEVATION



NORTH EAST ELEVATION



SOUTH EAST ELEVATION



THE TIDES, St Mary's, ISLES of SCILLY

1:100 @ A3 24 June 2022
0 1 2 3 4 5m

Rev B: 2 April 2023
more planner requested
amends
Rev A: 3 Sept 2022
Redesign requested by
planner to alter NE
elevation

TTcs22-P02
Rev B