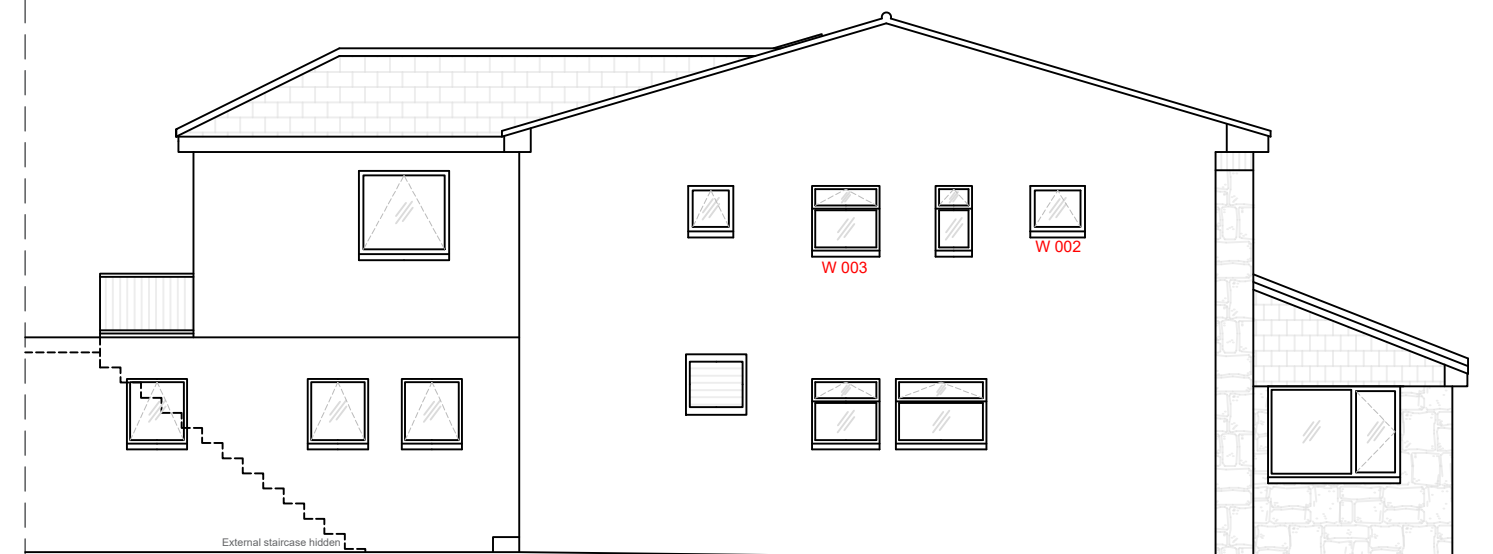
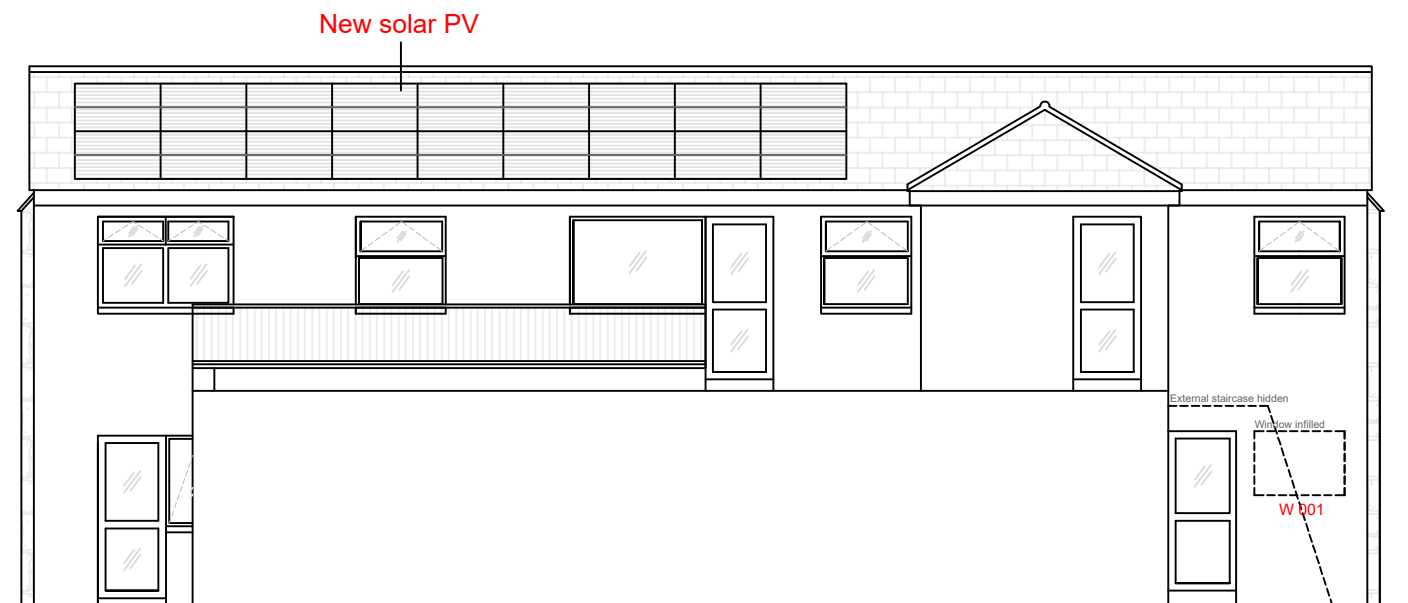


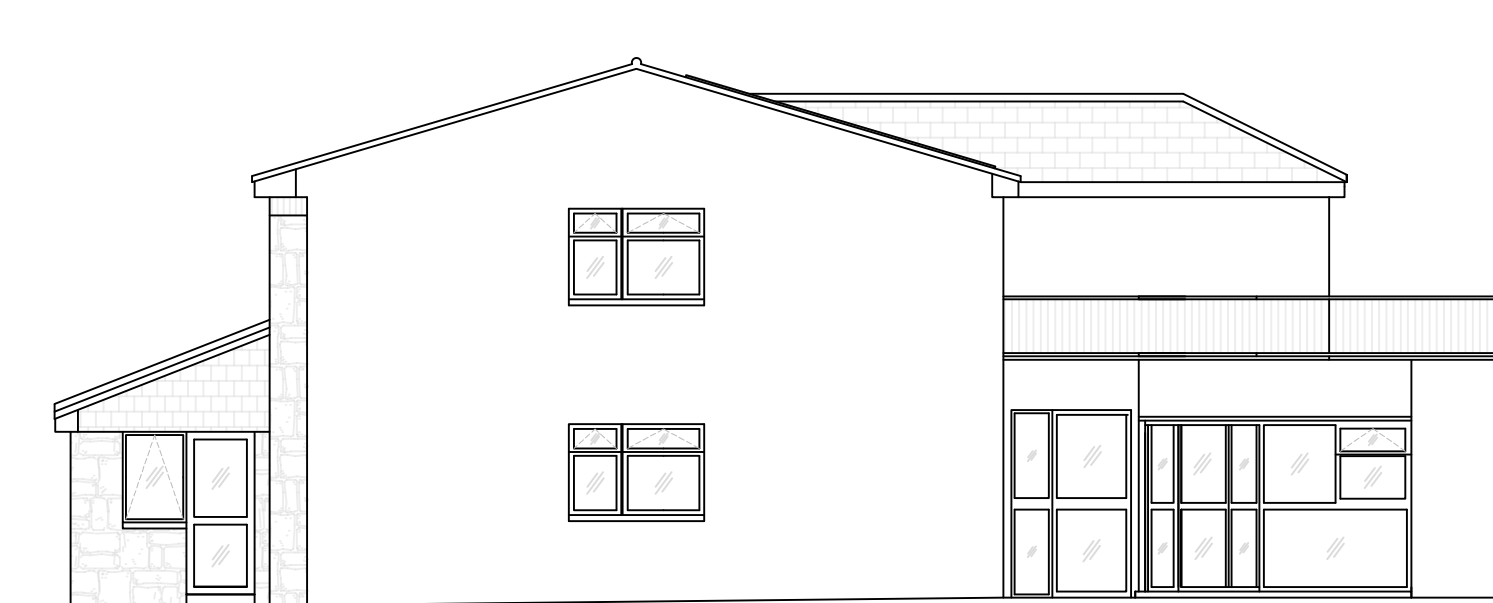
1 North Elevation
1:100



2 East Elevation
1:100



3 South Elevation
1:100



4 West Elevation
1:100

Ref	Existing	Proposed
W 001	Timber frame, single glazed	Remove window and block up opening
W 002	Timber frame, single glazed	uPVC double glazed, top hung opener
W 003	Timber frame, single glazed	uPVC double glazed, match existing opening configuration
Remaining Windows	uPVC double glazed	Remain as existing
External Doors	uPVC and Aluminium frame, double glazed vision panels	Remain as existing

RECEIVED
By Liv Rickman at 2:52 pm, Sep 14, 2023

Currie & Brown
Poseidon House, Neptune Park,
Maxwell Road, Plymouth, PL4 0SN
United Kingdom
Tel: 01752 273473, Fax: 01752 257755, www.curriebrown.com

Client
Council of the Isles of Scilly

Title
**Park House
Proposed Elevations**

Project
Park House - Refurbishment Works

Date **14.09.2023** Drawn **AH**
Scale **1:100 @ A3** Checked **KC**

Drwg No. **4101565-PH-PL-02** Rev