

**RECEIVED**

**By A King at 9:16 am, Nov 16, 2023**

**Andrew King**

---

**Subject:** FW: P/23/086/COU: Land at Green Waste Processing Site, Parting Carn, St Mary's

**CABIN DETAILS**

The cabins will be constructed of steel, as mentioned in the attached Stackright Brochure and will be painted Pantone (RAL 7732U) [Pantone / PMS 7732 U / #498564 Hex Color Code, RGB and Paints \(encycolorpedia.com\)](#).

**Pantone / PMS 7732 U / #498564 Hex Color Code**



The hexadecimal color code #498564 is a shade of green-cyan. In the RGB color model #498564 comprised of 28.63% red, 52.16% green and 39.22% blue. In the HSL color space #498564 has hue of 147° (degrees), 29% saturation and 40% lightness. This color has an approximate wavelength of 523.73 nm.

The installation of the cabins will have some disturbance to the soil, and to minimise this we will install the cabins with 600mm x 600mm slabs on each corner.

The dimensions of the cabins are shown on plan reference 107780-PEF-XX-500-D.DR-T-0003\_S3\_P02.

Please let me know if you require anything further.

Kind regards

Maxwell

**Maxwell Griffin**  
**Graduate Planner**

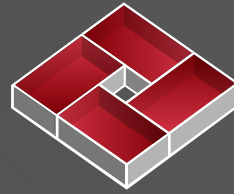
For and on behalf of Fisher German LLP

t: 01530442901 m: 07866212275  
The Estates Office - Norman Court - Ivanhoe Business Park  
Ashby de la Zouch LE65 2UZ



**RECEIVED**

*By A King at 9:16 am, Nov 16, 2023*



**STACKRIGHT**  
SPACE IN STEEL

**PORTABLE ACCOMMODATION ENGINEERED TO LAST**



# SPACES THAT WORK FOR YOU

**WELCOME TO STACKRIGHT'S RANGE OF  
PRECISION ENGINEERED PORTABLE AND  
MODULAR ACCOMMODATION.**

Stackright is one of the UK's leading manufacturers and suppliers of site accommodation and storage solutions. We specialise in the manufacture and supply of robust anti-vandal cabins and modular buildings that are designed and built to the preferred specification of our clients. Our in-house design and technical teams have the capability and experience to bring your accommodation ideas and requirements into reality, regardless of project size, specification, end-use or project location. Our product range includes everything from secure welfare, office and canteen facilities to bespoke toilet blocks, gatehouses and sales suites. We also produce a range of ancillary products, such as smoke shelters, staircases and water bowser units, that complement our main product offering and ensure we can satisfy your every need.

This brochure provides an overview of many of the products we can supply, however, this is not an exhaustive list of our full offering. Should you have a particular requirement or wish to receive more information then please contact our sales team who would be happy to assist.





## CONTENTS

Why Stackright? _____	4
Portable Accommodation Offering _____	6
<b>SALUS</b> - Secure Welfare _____	8
<b>OFFICIUM</b> - Office/Personnel Units _____	9
<b>VIRIDIS</b> - Eco Cabins _____	10
<b>VENDO</b> - Sales Office _____	12
<b>SERVO</b> - Storage Units _____	13
<b>OBEX</b> - Security Cabins _____	14
<b>IGNIS</b> - Fire Rated Units _____	15
<b>NEXUS</b> - Anti-Vandal Modular Buildings _____	16
Accessories - Ancillary Product Range _____	18
Assembly and Fabrication _____	19



# WHY STACKRIGHT?

## ACCOMMODATION SOLUTIONS THAT MEET ALL YOUR BESPOKE REQUIREMENTS

In recognition that no two customers' building needs are the same, we adopt a consultative approach with our clients to ensure we develop a building solution that meets their specific requirements in full, as well as creating a space that fulfils all the demands of their application. Whether you need a single cabin or a complex modular building, our experienced in-house design and technical teams are there to offer a complete bespoke design and build service. We'll work with you to make your ideas happen, and advise on feasibility and design to make the most efficient use of your available space and budget.



## SECTORS

As one of the UK's leading suppliers of secure accommodation and storage units we work with a diverse range of clients across multiple sectors nationwide. From small local businesses to globally recognised enterprises, we have the experience, expertise and capacity to deliver the complete service – no matter the scale or complexity of your project. Some of the sectors our clients work within:

- Construction & Engineering
- Oil & Gas
- Energy & Utilities
- Sports & Leisure
- Residential
- Industrial and Commercial
- Security and Access Control
- Rail & Highways

## STAY AHEAD OF THE COMPETITION

We constantly innovate to provide the most up to date and compliant solutions, and through our experience we can suggest improvements and upgrades that will future-proof your accommodation and help you to stay ahead of the competition. Our ongoing investment in R&D underlines our dedication to continual improvement and gives our clients the assurance that our products will remain at the forefront of a continually evolving market.

## SUPERIOR QUALITY THAT LASTS

Utilisation of robust materials and manufacturing processes, at our purpose-built UK factory, results in our cabins being built to last in even the most challenging of environments. Our plant boasts its own press section, welding production line, spraying and baking facility, fit-out lines and external storage area, ensuring we have complete control over the quality of our builds at every stage of the process. This means you can rest assured, no matter how challenging your accommodation and storage requirements, Stackright will meet them to the highest of standards. Our ISO 9001 certification clearly demonstrates this commitment to quality.



## OPERATIONS

With our purpose-built manufacturing facility in West Lancashire and numerous Group offices, plants and depots positioned across the UK, we are ideally situated to support our national clients. Our plant is sited conveniently alongside the major motorway networks in the North West of England. Our production facility is equipped with all the necessary elements to manufacture products to the very highest of standards, coupling this with our 100% directly employed workforce provides Stackright with a blend of control and stability that enables us to keep our commitments on agreed delivery dates and budgets.

## OUR COMMITMENT TO SUSTAINABILITY

The manufacturing sector and environmental awareness can sometimes appear to occupy opposite ends of the spectrum, yet, as one of the UK's largest manufacturers of secure accommodation we place environmental concerns, the needs of the local community and our workforce firmly at the top of our agenda. As a privately owned company with a focus on long term sustainable growth, we recognise the success of our business is inextricably linked to the health and wellbeing of people and the planet. We aim to adopt and apply best practice sustainability principles by ensuring environmental, social and economic parameters are considered and integrated in the operations of our business. We strive to source high-quality materials from like minded organisations within our supply chain, ensuring we source responsibly and with attention to potential impacts on both people and the environment. In doing so, we aim to continuously improve and strengthen our sourcing practices while remaining sensitive to the local community in which we operate. Our products and processes are continuously being developed and enhanced in line with our sustainability goals. An example of this is Stackright's dedicated ECO product range that incorporates a variety of smart energy saving features with enhanced insulation performance. This innovative development is the result of several years of continuous research from our product development team and is proving a firm favourite with customers, bringing significant cost savings and reductions in energy consumption. Our ISO 14001 certification and environmental management system underpins our sustainability goals and offers immediate reassurance to both our customers and employees that we have taken steps to minimise our organisation's impact on the environment.

## FINANCIAL STABILITY

The decision to work with Stackright comes with the assurance that we will see the project through and be here to support you for all your ongoing requirements for years to come. As a fully owned subsidiary of the privately owned GCH Group, our business is well capitalised with a strong balance sheet. This degree of financial stability offers our existing and prospective customers an unrivalled assurance of project delivery.



# PORTABLE ACCOMMODATION RANGE

Stackright's range of secure accommodation units are designed and constructed to meet all your needs for legally compliant facilities, no matter the scenario, setting or industry sector. To maximise available space on site, units can also be linked together to create double or triple-stacked complexes, with access to the upper floors provided by an external staircase. Constructed from robust, galvanised steel the Stackright range of portable accommodation products display strong durability characteristics and are fit for use in all environments.



<b>SALUS</b>	Secure Welfare
<b>OFFICIUM</b>	Office/Personnel Units
<b>VIRIDIS</b>	Eco Cabins
<b>VENDO</b>	Sales Suites
<b>SERVO</b>	Storage Units
<b>OBEX</b>	Security Cabins
<b>IGNIS</b>	Fire Rated Units
<b>NEXUS</b>	Anti-Vandal Modular Buildings
<b>Accessories</b>	Ancillary Product Range



## DESIGN OPTIONS

THE UNITS CAN BE DESIGNED AND BUILT TO YOUR OWN REQUIREMENTS WITH TYPICAL OPTIONS INCLUDING:

- Open plan or partitioned
- Combination units - include office/welfare/toilet facilities within same unit
- Insulation type/thickness
- Doors and windows - number and type
- Single or stackable units
- Wall and floor coverings
- Window shutters and heavy duty locks
- Roller shutters



Flat or corrugated external steel façade



## PAINT OPTIONS

We have the capability to provide an exterior paint finish to match your company branding and can colour match RAL numbers.



## WARRANTY

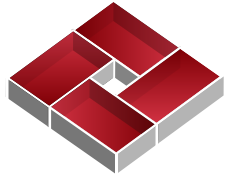
All of our units come with a standard 10 year structural manufacturing defects warranty. All other products, materials and external paintwork are covered by a 12 months defects warranty.

## STACKRIGHT STANDARD UNIT SIZES

3050mm x 2440mm 10' x 8'		6405mm x 2440mm 21' x 8'	
3660mm x 2440mm 12' x 8'		7320mm x 2745mm 24' x 9'	
4880mm x 2440mm 16' x 8'		9760mm x 3050mm 32' x 10'	

Bespoke unit sizes also available upon request





STACKRIGHT  
**SALUS**

## SECURE WELFARE UNITS

The SALUS range includes a variety of welfare units such as canteens, drying rooms, toilets and washrooms. These facilities are available in a selection of sizes and can be configured to suit. With a number of internal layout options available, the SALUS range can be configured to accommodate several functions in the same unit, therefore best maximising the available space on site.

### CANTEENS INCLUDE:

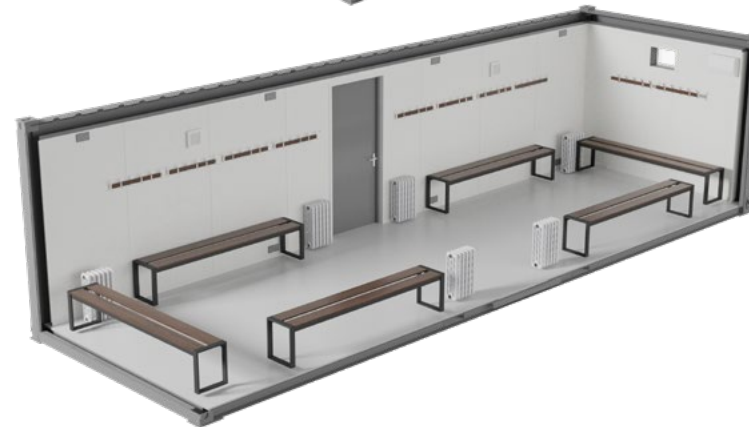
- Kitchen area
- Sinks and cupboards (associated plumbing)
- Seating and tables

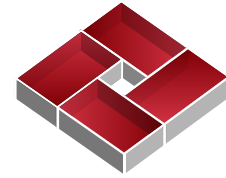
### DRYING ROOMS INCLUDE:

- Benches
- Coat hooks
- Mechanical ventilation
- Heating system
- Lockers

### TOILET & WASHROOM BLOCKS INCLUDE:

- Hygienic and easy to clean WCs, urinals, wash basins
- Non-slip flooring
- Efficient heating and drying systems
- Various configurations available upon request
- Disabled DDA (Disability Discrimination Act) options available





STACKRIGHT  
**OFFICIUM**



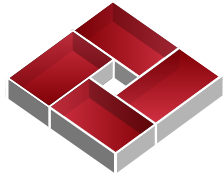
## OFFICE/PERSONNEL UNITS

We have a full range of temporary office accommodation, ideally suited for a variety of purposes. Partitioning can be used to create individual offices and meeting rooms.

### OFFICIUM RANGE OPTIONS

- Stackable units
- Can be partitioned to suit
- Fully insulated
- Whiteboards and coat hooks
- Spacious open-plan settings
- Ducting for data cables
- Choice of flooring
- Glazed to suit

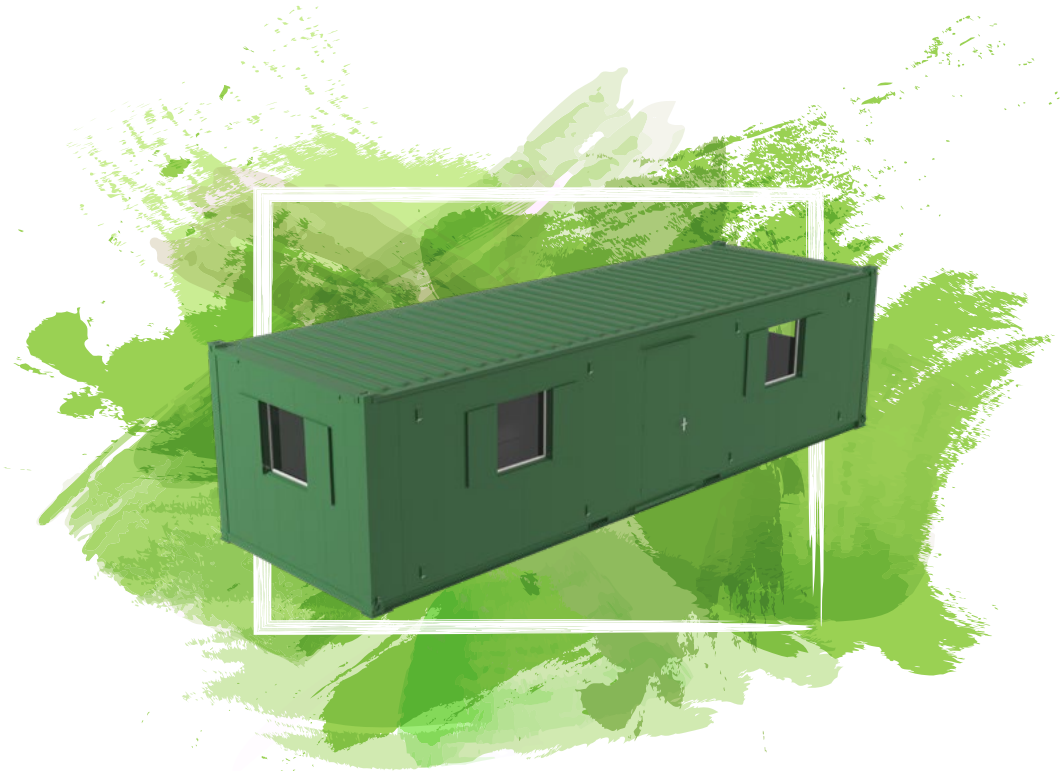




STACKRIGHT  
**VIRIDIS**

## ECO CABINS

Our VIRIDIS range has been designed to provide the necessary durability of build, comfort, unit size options and security features offered across our wider product range. These units are also enhanced with additional design features introduced to drive energy efficiency and minimise water consumption and waste. This results in significant savings in running costs and ultimately a reduction in carbon emissions.



### UNIT OPTIONS WITHIN THE VIRIDIS RANGE INCLUDE:

- Offices
- Meeting rooms
- Welfare accommodation
- Toilets and washrooms
- Drying rooms
- Combination units also available

### KEY BENEFITS

- Assists towards achieving sustainability and environmental targets
- Reduces carbon footprint
- Energy efficient
- Reduced running costs
- Can be configured to suit requirements
- Available in a range of sizes



## THE VIRIDIS RANGE COMBINES A NUMBER OF ENERGY SAVING OPTIONS DESIGNED TO REDUCE BOTH CARBON EMISSIONS AND ENERGY CONSUMPTION

Double-glazed windows to reduce heat loss and enhance U-value performance



Enhanced insulation to improve U-value performance



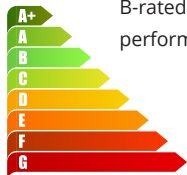
Water supply dual-flush toilet cisterns and push-button taps



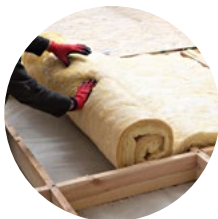
Thermostats and timers to ensure heating is only used when required



Water harvesting and waterless urinals



B-rated EPC performance



Capability to enhance under floor thermal insulation



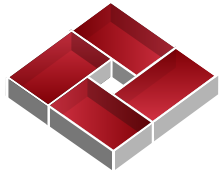
Emphasis on responsible sourcing of materials



Energy efficient remote monitoring and control capability



Production facility ISO 14001 accredited - Supports your BREEAM targets



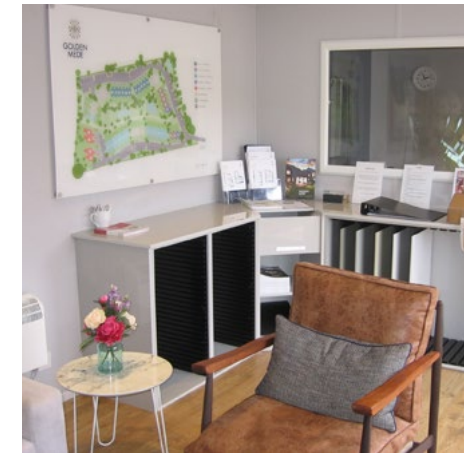
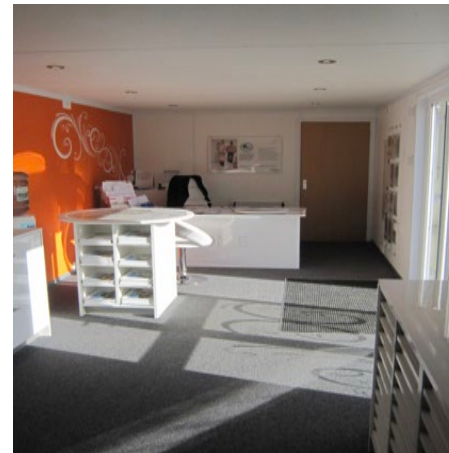
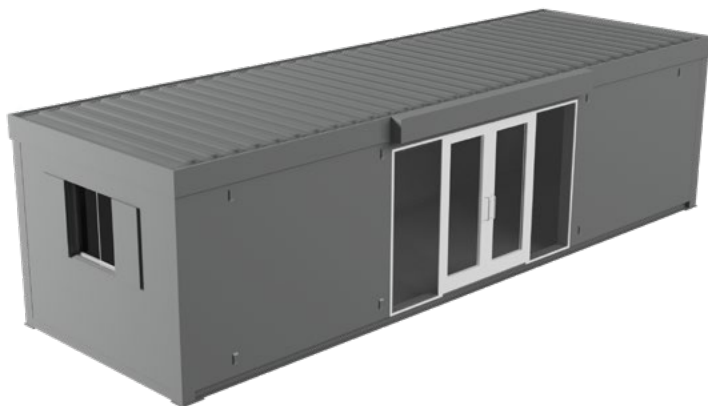
STACKRIGHT  
**VENDO**

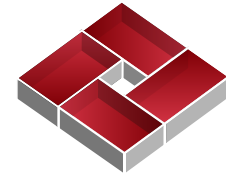
## SALES AND MARKETING SUITES

The VENDO product range has become a popular option for our clients in the retail and house building sectors. These units can be configured to meet the exacting needs of our clients to ensure they create a comfortable and professional environment for them to meet with customers.

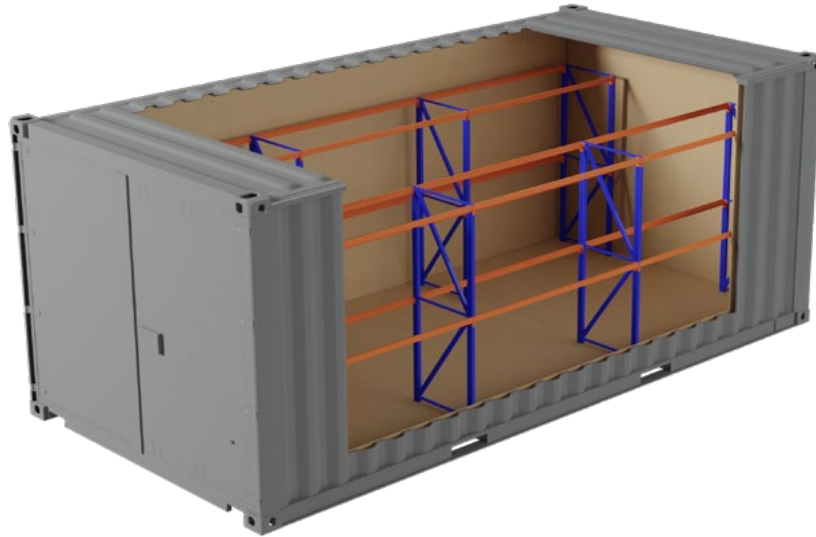
### CONFIGURATION OPTIONS FOR THE VENDO RANGE INCLUDE:

- Enhanced glazing and door options - Including full-height glazing
- Exterior decoration in company branding
- Partitioning can create a reception area and meeting rooms
- Heating/Cooling Air Conditioning Systems





STACKRIGHT  
**SERVO**



## STORAGE UNITS

The SERVO storage unit range has been designed and built with robust materials and security components to ensure equipment, materials and tools will be safe, regardless of the environment they are used in. Each Secure Store is fitted with a high security locking system giving our clients peace of mind and offering extreme resistance to theft and vandalism.

### KEY BENEFITS

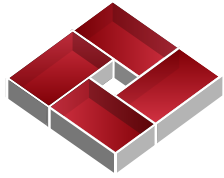
- Highly secure units
- Strong and resilient
- Can be configured to suit requirements
- Available in a range of sizes



### CONFIGURATION OPTIONS IN THE SERVO RANGE INCLUDES:

- Double doors for ease of access for larger plant items
- Heating
- Lighting
- Lined or Unlined
- Racking
- Shelving





STACKRIGHT  
**OBEX**

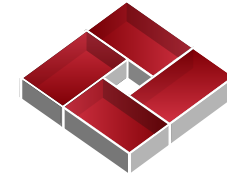
## SECURITY CABINS

The OBEX range has been created and designed for our clients who have a requirement for a more substantial security cabin. The increased floor space within these larger security units offer the flexibility to design and configure the internal layouts to accommodate a range of different functions. Therefore, they not only provide a safe and comfortable environment for security personnel to welcome visitors and restrict access, but they can also be adapted to house an induction room, one-way entry and exit corridors or even an access control turnstile. The units can be painted to any RAL reference number, meaning visitors receive the best possible first impression.

### OBEX RANGE OPTIONS:

- Windows can be fitted on all sides if required
- Internal configuration options to accommodate a range of functions
- Fully insulated ensuring all year round comfort for personnel
- Roller shutters
- Can be designed to house entry/exit turnstiles





STACKRIGHT  
**IGNIS**



The IGNIS product range has successfully satisfied independent 3rd party fire testing – achieving integrity and insulation fire resistance for 30 minute exposure (structure, doors and windows).

### KEY BENEFITS

- 30 minute fire rating – third party accredited
- Strong and resilient
- Can be configured to suit requirements
- Available in a range of sizes

## FIRE RATED UNITS

The IGNIS range offers complete reassurance that the units will safeguard your site and personnel against the dangers of fire and its spread. The IGNIS range is manufactured to the required specification that has been independently tested and certified by the Warringtonfire Research Centre to provide 30 minutes fire resistance when tested in accordance with BS 476. This level of fire certification allows the IGNIS range to fully comply with the Joint Code of Practice on the Protection of Fire on Construction Sites and Buildings Undergoing Renovation.

### IGNIS RANGE OVERVIEW

- As part of our third party fire accreditations, a full review of all building elements and the fire rated properties of the materials used within the IGNIS range has been undertaken to ensure full compliance with the requirements of the Joint Code of Practice.
- 'Class 0' rating for internal spread of flame and propagation of fire.
- The extensive use of non-combustible materials in the construction of the IGNIS product range offers the assurance they will not contribute to the severity or duration of any fire, thus greatly reducing the potential fire load.
- The construction and specification of the IGNIS range is fully compliant with the requirements of Section 13 of the Code for Temporary Accommodation and Temporary Buildings. *The fire rated units must not be altered or modified without express written permission from Stackright, failure to do so may compromise the fire performance of the unit.*
- Available units within the IGNIS range - offices, canteens, welfare facilities and security cabins.



## ANTI-VANDAL MODULAR BUILDINGS

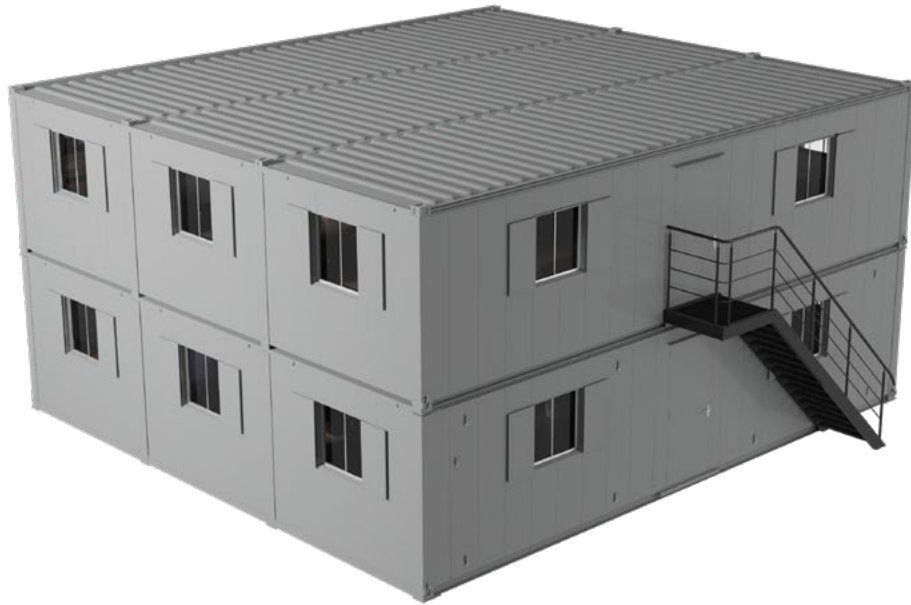
The NEXUS anti-vandal modular system was developed to offer our clients with complete design freedom to configure the internal layouts of their units to their exact requirements. This level of internal configuration flexibility is underpinned by the fact the NEXUS system has the capability to create large open plan spaces that can be utilised in any number of ways, such as large communal areas to create shared office space or extensive welfare set ups. The opportunity to partition off sections of these large open plan spaces to create private areas such as meeting rooms or offices, only further enhances the design freedom afforded by use of this system.

### KEY BENEFITS

- Flexibility to create large open plan spaces
- Can be used for a wide range of functions
- Rapid build speed – when compared to traditional building methods
- More cost effective than traditional builds
- Additional modules can be added to increase capacity







## THE NEXUS MODULAR BUILDING SYSTEM CAN BE UTILISED & CONFIGURED TO CREATE:

- Office space - with reception area and meeting rooms
- Storage areas
- Canteens
- Toilet blocks
- Shower rooms
- Sales and marketing suites

## THE END-TO-END PROCESS WITH NEXUS

- Client requirements are drawn up by our skilled design team.
- Costs and delivery requirements discussed and agreed.
- Delivery details and site preparation requirements are agreed with client.
- Required number of units are produced in agreed time frame and delivered to site.
- Installation undertaken - ensuring wind and water tightness is achieved as quickly as possible.
- The modular building is created by linking the units together to create the correct floor area.
- Process is repeated for additional floors.
- Post installation aftercare visit is carried out to complete final checks.

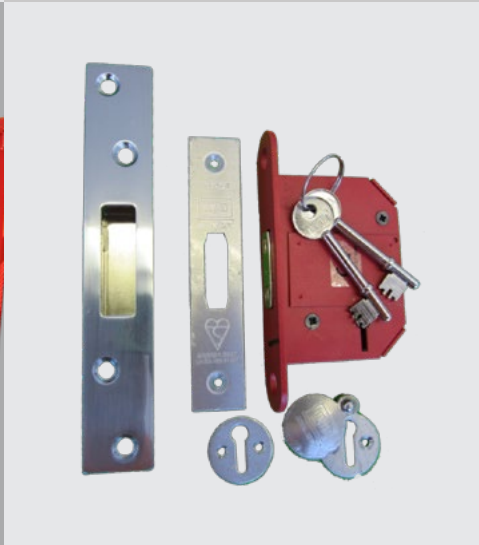




# ACCESSORIES

## ANCILLARY PRODUCT RANGE

Our extensive range of ancillary products have been developed through our collaborative approach to working with our clients and understanding what is important to them. With the aim of offering our clients a one-stop shop, Stackright's ancillary product range includes items and options that will optimise the comfort, safety and security of your accommodation. We also produce a range of additional units and structures that both complement our other products or can be used standalone.



### THESE INCLUDE:

- Security Doors
- Turnstile Pods
- Automatic Door Closers
- Smoking Shelters
- Secure Bowzers
- Effluent Tanks
- Secure Service Units
- Steps, Stairs and Handrails
- Chemical Stores
- Platforms and Ramps



# ASSEMBLY & FABRICATION

To consistently deliver high quality units for our clients, both on time and on budget, we operate an unrivalled production facility within our industry. The entire manufacturing process is completed at our multi-acre headquarter facility in Skelmersdale, Lancashire, where our production plant and skilled workforce are fully equipped to deliver our products both on time and to the highest possible standards. We directly employ teams of qualified welders, joiners, window fitters, electricians, plumbers and paint sprayers.

We take great pride in the fact that all processes are undertaken and completed in-house, from initial designs through to fabrication, painting and internal fit-out. Keeping the entire production process in-house not only ensures we have complete control over the quality of our builds at every stage of the process, but it also gives us the flexibility to schedule production to meet demand. This offers our customers unrivalled reassurance that they are ordering a quality product that is built to last, and that Stackright has the capability and capacity to meet their order requirements without compromise.

- Over 170 directly employed tradesman
- Efficient production processes results in industry leading output capacity
- Ongoing commitment to investment in our workforce, processes and the latest production technologies
- Multiple production lines
- Material stock holding facility

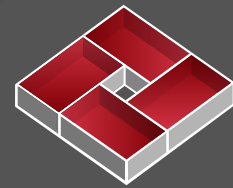


## QUALITY ASSURED ACCREDITATIONS

We are proud to announce that our management systems are approved and compliant with the standards of ISO 45001. The scope includes, the design and manufacture of steel housings, accommodation units, storage units and the design, manufacture, and installation of modular buildings. Our business is also compliant to ISO 9001, which clearly underlines our commitment to quality, meeting customer requirements and our ongoing dedication to continual improvement. Furthermore, our ISO 14001 accreditation underlines our commitment to our sustainability goals and improving the overall impact our business has on the environment.







**STACKRIGHT**  
SPACE IN STEEL



[sales@stackright.com](mailto:sales@stackright.com)

01695 455580 | [www.stackright.com](http://www.stackright.com) | Copyright © Stackright 2022

Stackright Ltd, Gardiners Place, West Gillibrands Ind Est. Skelmersdale, Lancashire, WN8 9SP