

RECEIVED

By Liv Rickman at 4:25 pm, Jan 31, 2024

23010-04

Isles of Scilly Enabling Works

Design Commentary
January 2024



Over the last few years, it has become apparent that the Council owned and run care home, Park House, on St. Marys island, needs to be replaced.

The NHS has now confirmed that grant funding has been allocated to Cornwall Partnerships NHS Foundation Trust (CFT) for the development of an integrated health and social care facility on the Isles of Scilly.

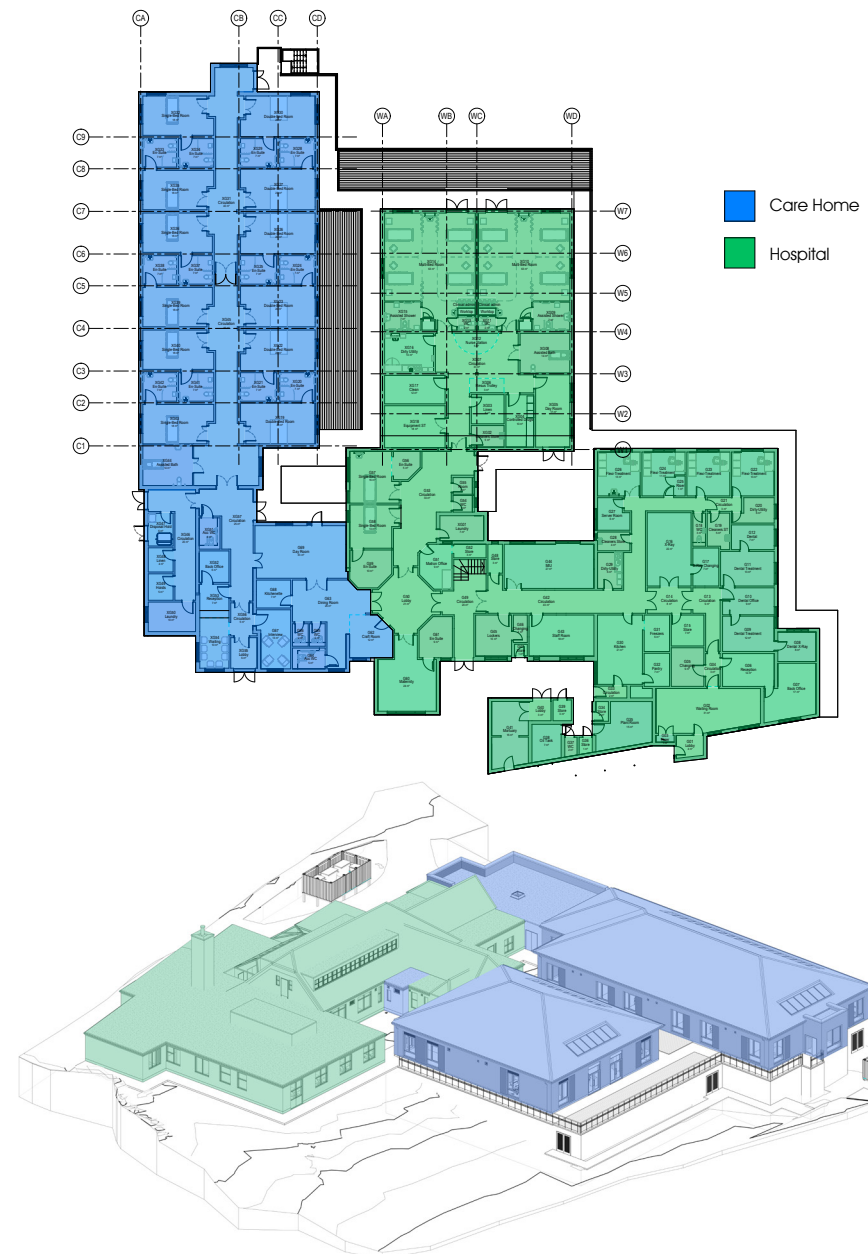
The extension and remodelling of the new integrated health and social care facility will require significant changes being made to the layout of the existing St Mary's Community Hospital on the Isles of Scilly, and this "Adaptability Report" is a critical part of the evidence base that will be included within the SFBC and associated cost modelling.

The proposed design solution provides two new 'off-site' construction extensions. The first extension, indicated in blue, provides 12 new care home beds (6 single and 6 double) with en-suite bathrooms, together with supporting circulation spaces and assisted bathrooms.

A new entrance to the care home is being formed via extension and remodelling of the existing hospital frontage, to give the care home a dedicated entrance and it's own sense of identity. This new entrance zone contains support accommodations, such as laundry spaces, disposal holds, a reception and visitor waiting spaces. Part of the existing hospital is being remodelled to provide social spaces including Day Rooms and Dining spaces.

The hospital ward extension (indicated in green) is two new 4 bed hospital wards and supporting clinical spaces including dirty and clean stores, assisted baths, day rooms and various supporting stores. The remainder of the existing hospital is to be in part remodelled to provide additional clinical spaces and 2 single bed rooms.

The schedule of accommodation has been agreed with the clinical team on the Isles of Scilly and the team supporting Park House Care Home.



Massing

The purpose of this project is to create a comprehensive healthcare facility that could further aid the people of Scilly. In order to do this, our plan is to extend St Mary's Hospital, expanding their range of services by adding comprehensive Care Home facilities.

The Care Home would be introduced via a single storey extension onto the back of the hospital, together with an additional smaller ward extension to the rear, providing wonderful views of the coastline.

As a healthcare and care home facility, and to comply with the Health guide, patients will need level access. This required all extended spaces to be on the same ground access level; necessitating a raised platform to ensure a single storey massing.

Both extensions have a slate pitched roof in keeping with other buildings in the Hugh Town area. Both of the ridge lines to the extensions are lower than the existing hospital ridge.

We have attempted to reduce the impact on the stone plinths the two new extensions are positioned with soft landscaping and open glazed balustrades.



Panoramic view of Hospital from across the bay towards Porthcressa Beach



Panoramic view of Hospital from across the bay towards Porthcressa Beach from Upper Benham Battery.

St Marys Hospital has had a varied history in terms of its construction and development.

The building in its current form is predominantly single storey, part two storey with accommodation within the roof space to the central pitched roof.

The existing building was designed and built in the 1930s. Since then, the hospital has undergone various renovations, extensions and improvements across different periods to modernise its facilities and adapt to delivering required key services and evolving medical standards and technologies.

It has multiple pitched roofs. Pitched roofs are used on many buildings in the Isles of Scilly, St Mary's Airport is a significant example. It has multiple tiers of pitched roofs in the vernacular style.

This is reflective of the local architecture and aesthetics on the island, and in particular is in keeping with the appearance of the adjacent residential properties on King Edwards Road and Hospital Lane.

As such, the proposed extension will have pitched roofs, blending the new structure with the existing building to create a cohesive appearance, ensuring that all segments blend seamlessly into the environment.

We have proposed a new entrance for the Park House Care Home, to give this facility it's own identity and dedicated entrance with a new reception and waiting area.

The scenic views from the care home to the beautiful coastline have been maximised with the use low window sills. We have introduced garden courtyards to support the care home residents and hospital patients health and wellbeing whilst they reside in the facility.



St Marys Health Centre



St Marys Airport



View of Hospital Roof entering from main vehicle entrance



View of houses on Church Road

Materials

The existing building is a mixture of pitched slate roof on timber construction, and single ply membrane and bituminous felt flat roof constructions, on timber construction. The pitched roofs have a mixture of hipped gables, and vertically tiled gables.

The materials chosen for this project were selected in keeping with the vernacular styles of the Isles of Scilly. Employing the use of locally sourced Granite stone, Grey Slate roofs and Off White Insulated render to continue the existing finishes of the Hospital.

The existing external walls are of masonry construction and are predominantly white rendered, with a low-level painted masonry plinth.

A small area of granite stone has been used on the northeast elevation to the main entrance. Again, granite stone is a predominant stone traditionally used for buildings on the Island. Quarried locally, granite has been historically favoured due to its durability, resilience against weathering, and availability in the region.

Specifying and installing eco-friendly and locally sourced materials and labour for the construction works, will also prioritise materials with low environmental impact and high durability.

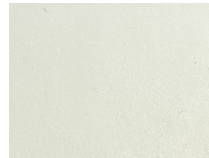
Through this analysis, and the supporting typologies native to the Isles, our decision to reuse the same materials in the proposed design will not only ensure a seamless blend, but will be long wearing, as proven by the existing materials.



Native Granite Stone



Grey Slate Roof



Off White Insulated Render



Dibble and Grub, situated on Portcressa Beach



Portcressa Public Library



Buzza Hill Dolmen



View of houses on Church Road