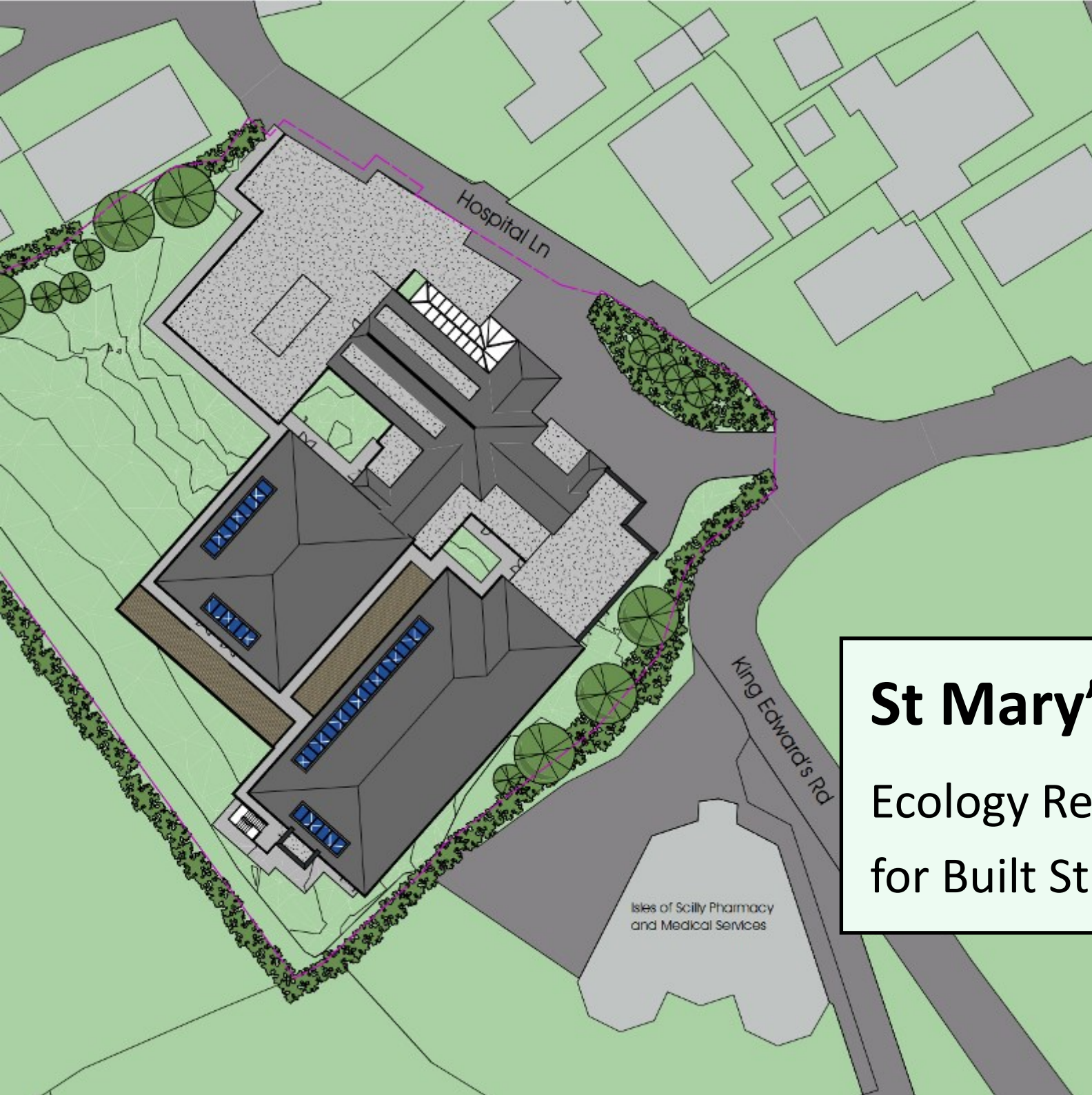


**RECEIVED**

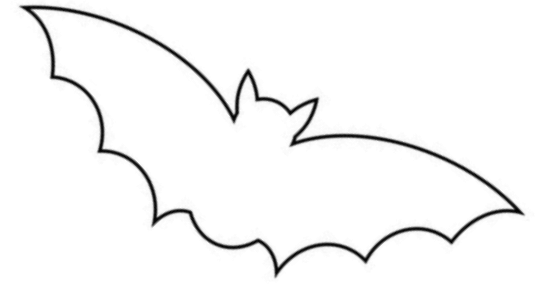
By Liv Rickman at 4:33 pm, Jan 31, 2024



# St Mary's Hospital

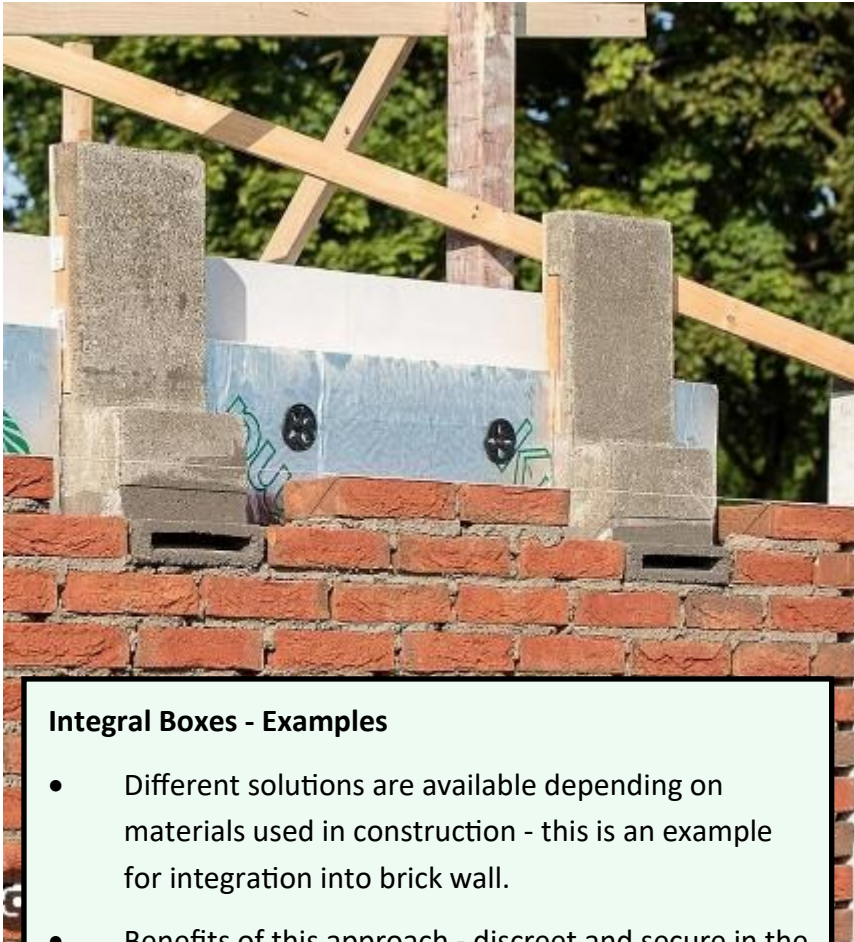
Ecology Recommendations  
for Built Structures

Isles of Scilly Pharmacy  
and Medical Services



### Building locations for Bat Boxes

- Red arrows indicate optimal locations - Yellow arrows indicate also acceptable locations. Direction of arrow shows where the box should face onto eg. the red arrows indicate boxes facing south-east onto boundary vegetation to secure a sheltered fly-in area.
- Integrated boxes are preferable - stand-alone boxes could be installed alternatively. There are minimal suitable locations on existing trees etc. so integration into the building is the optimal solution.
- Height needs to be 3m minimum above the ground and location must be unlit by security lights etc.
- The submitted plans would need to be show the bat box locations to demonstrate that acceptable mitigation for loss of minor roosts can be secured if required.
- 6x boxes should be installed in different locations on the aspects indicated - more would be preferable.
- Box design and specification should be targeted to common pipistrelle



### Integral Boxes - Examples

- Different solutions are available depending on materials used in construction - this is an example for integration into brick wall.
- Benefits of this approach - discreet and secure in the long term. They also ensure that bats are restricted to the exterior of the building, with sealed, self-contained boxes which would reduce concerns over H&S in a hospital setting
- “Designing for Biodiversity: a technical guide for new and existing buildings” co-published by BCT and RIBA is a good reference for integrated solutions.

### External Boxes - Examples

- Different solutions are available and design can be tailored to building materials to ensure aesthetic impact is minimised





### Building locations for Bird Boxes

- Red arrows indicate optimal locations, close to vegetation and away from regular disturbance by patients or staff.
- Stand-alone bird boxes are recommended to allow cleaning and maintenance where required
- Height needs to be 3m minimum above the ground to minimise the risk of predation
- 10x boxes should be installed in different locations on the aspects indicated
- Box design and specification should be targeted to common garden bird species including house sparrow, blackbird and robin.
- Swallow nest boxes could be installed if an appropriate location can be found - swifts do not breed on the islands so boxes for this species are not recommended.
- Overleaf is a summary of recommended boxes - if the number of boxes locations can be confirmed, I can provide a recommended specification list



Open-fronted boxes for blackbird and robin



Hole boxes for species such as great tit

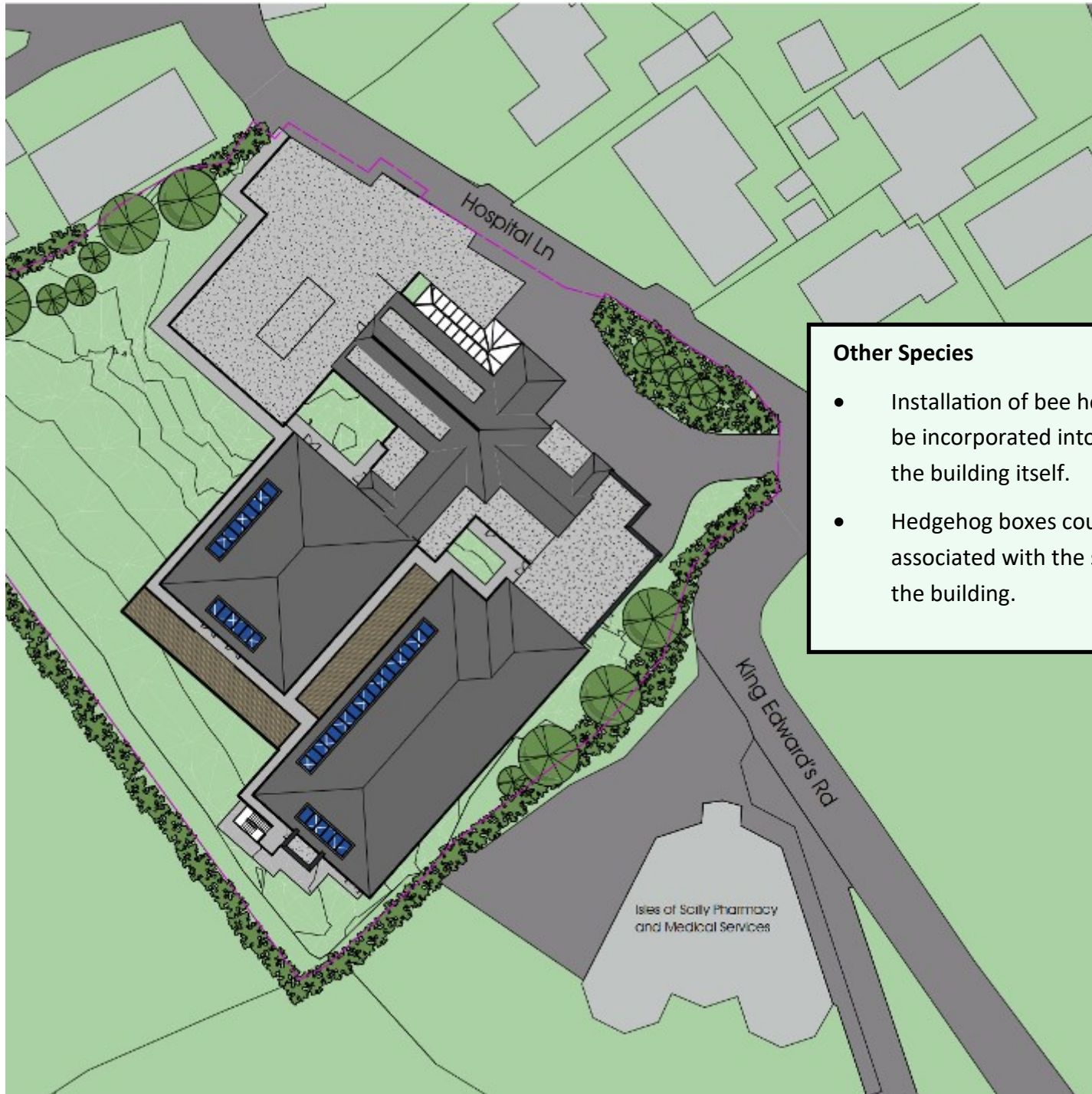
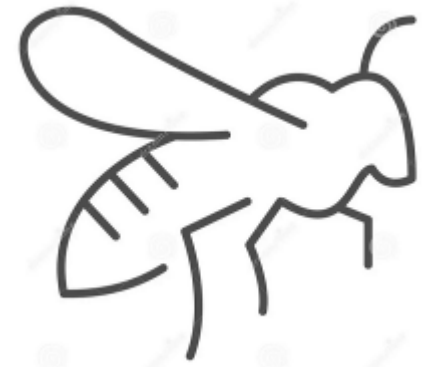


Sparrow terrace for communal nesting



Swallow nest cups

These would need to be situated in a covered or internal space - it is unlikely this could be accommodated in the build but if it may be an option then I can provide further details and specifications.



### Other Species

- Installation of bee hotels and habitat for other invertebrates can be incorporated into the landscaping of the hospital rather than the building itself.
- Hedgehog boxes could be considered - these would similarly be associated with the soft landscaping or habitat areas rather than the building.