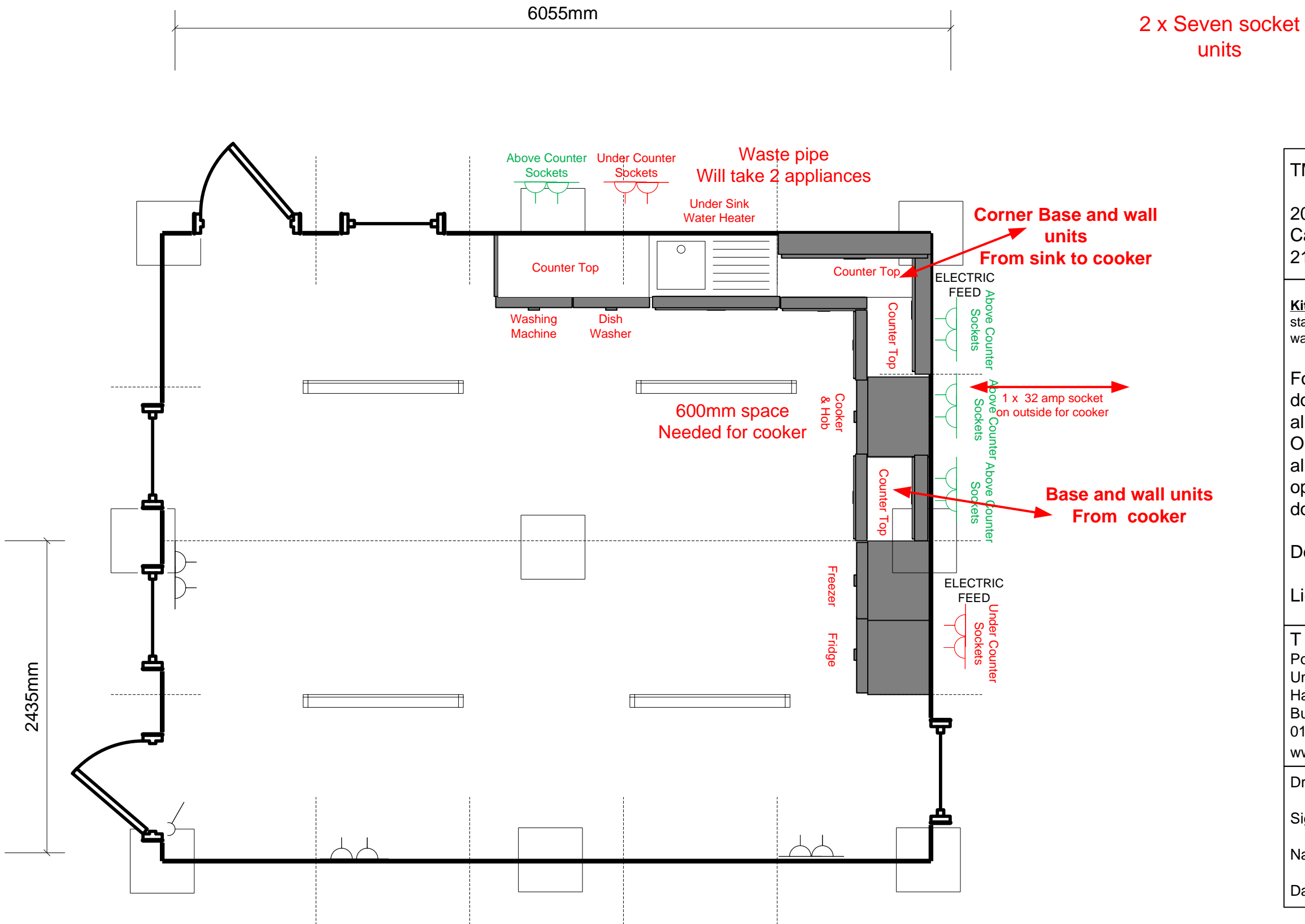


RECEIVED

By Liv Rickman at 3:29 pm, Mar 18, 2024



TMS Maritime
20' x 16' Canteen 21.02.2023
Kitchenette 1000 mm base unit, stainless steel sink, cold tap, electric water heater, worktop.
Four 800x1100 tilt & turn double glazed windows with aluminium roller shutter. One 754x1985 flush aluminium outward opening, right hand hung door with three keys
Double socket
Light switch
T F JACKSON Portable Accommodation Ltd Unit 25 Harpur Hill Business Park Buxton SK17 9JL 01298 79753 www.jackson-group.co.uk
Drawing is correct
Signature.....
Name.....
Date.....