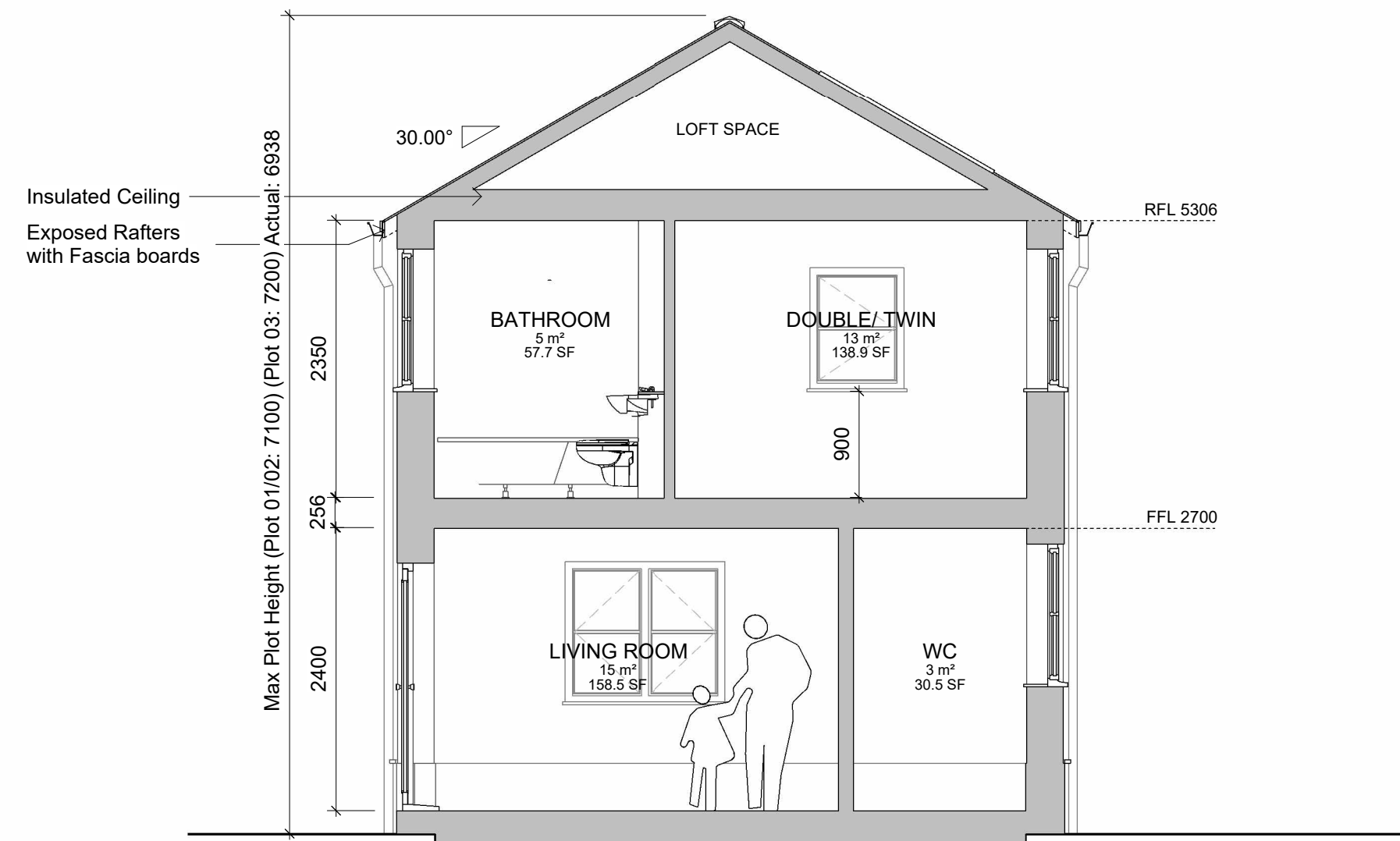


**RECEIVED**  
By Liv Rickman at 3:23 pm, Mar 26, 2024

Contractors to check all dimensions on drawings.  
Any discrepancies must be reported to KTA Architects Ltd or the contract administrator before proceeding.  
Do not scale except for planning purposes, work to figured dimensions.  
A Fire Consultant must be appointed for this project. KTA drawings & schedules to be read in conjunction with the Fire Consultant Fire Strategy Report.  
The Fire Strategy Report takes precedence over any KTA drawing or schedule & any discrepancy should be brought to KTA's attention.  
This drawing must be read in conjunction with all relevant consultants drawings.  
This drawing is © KTA Architects Ltd.

Revision Schedule			
Revision Number	Revision Date	Revision Description	Issued/ Authorised by
P2	MAR 2024	RMA ISSUE	OMS/AC
P1	FEB 2020	DRAFT ISSUE	MC/AC



**Section E**  
1 : 50

**HOUSETYPE E**  
2 Bed 4 Person  
Detached or Semi Detached

Part M(4) Category 2

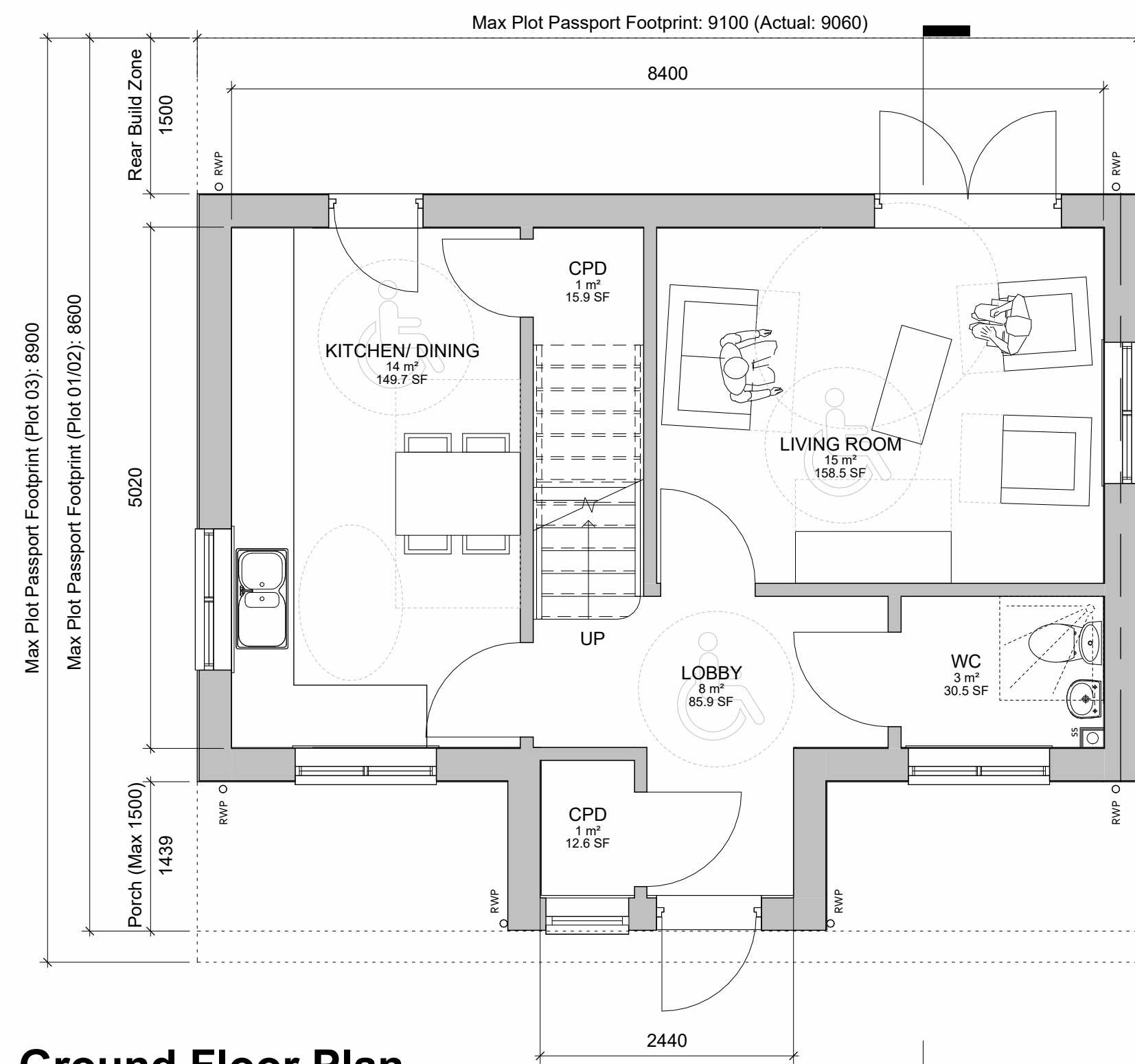
**2B/4P Housetype E - Front Entrance**  
GIA: 87.3m²  
Storage Area: 4m²  
Minimum GIA = 79m²  
(Technical housing standards - nationally described space standard)

Plot No.	House Type	Max. Plot Height
1	E	7.1m
2	E	7.1m
3	E	7.2m
4	F	7.1m
5	F	7.2m
6	F	7.2m
7	F	7.1m
8	F	7.2m
9	F	7.1m
10	Bespoke Unit	7.2m
11	D	8.4m
12	D	8.4m

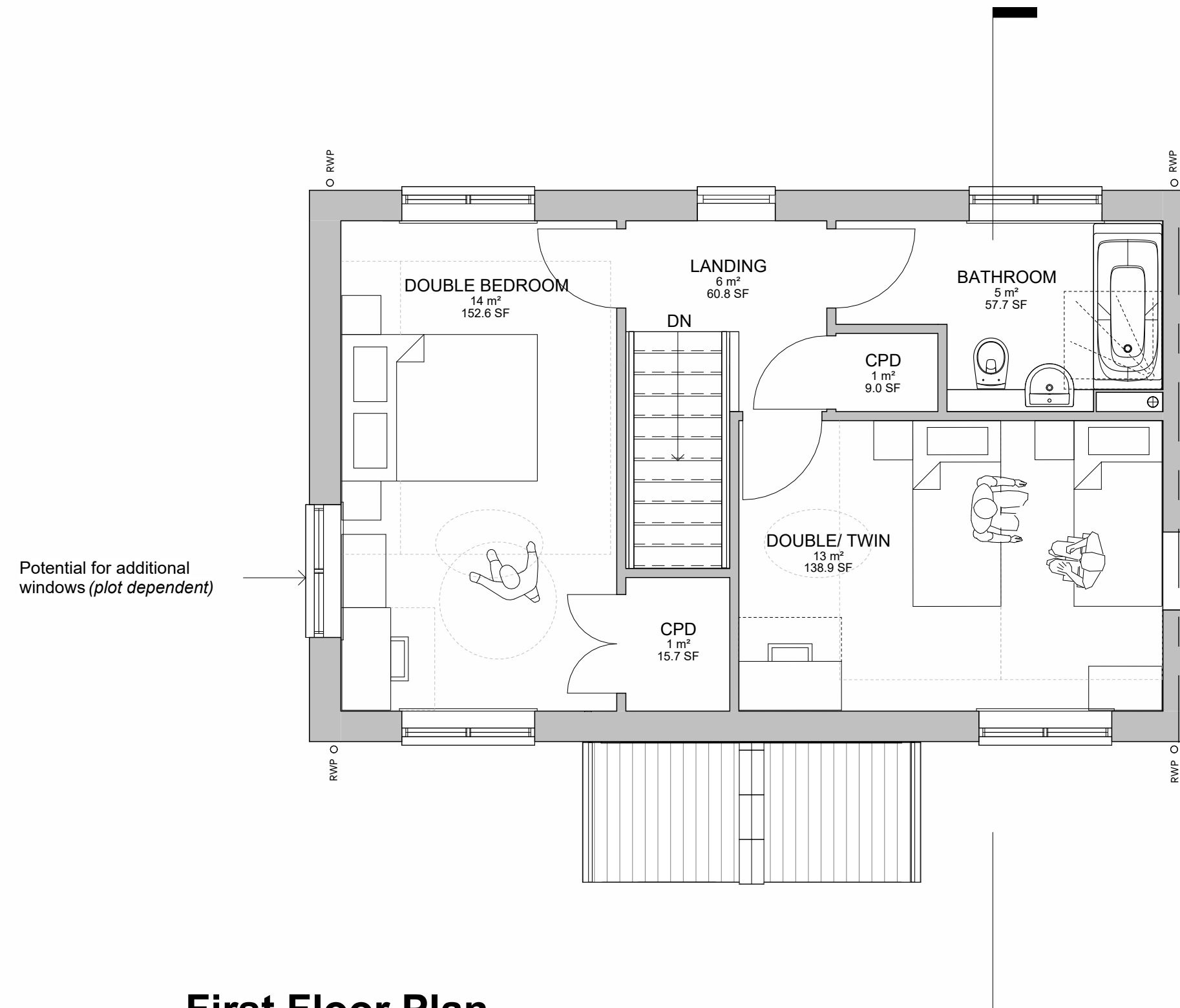
\* Refer to Outline Planning Permission for Development, Section C11: Restrictions of Building Height. Height measured from GFL to Ridge.

**PLANNING ISSUE**

**KTA**  
Architects | Urban Designers  
Winslade House, Winslade Park, Manor Drive,  
Clyst St. Mary, Exeter, EX5 1FY  
Tel: 01392 360338  
Email: kt@kta.uk.com  
Web: www.kta.uk.com



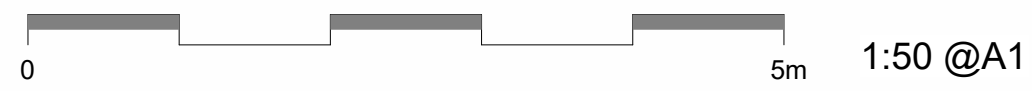
**Ground Floor Plan**  
1 : 50



**First Floor Plan**  
1 : 50

SC-KT-XX-XX-M3-A-2002-SK280-S0

SC-KT-XX-XX-M3-A-2002-SK280-S0



Project		Ennor Housing, Isles of Scilly	
Title		Housetype E - Typical Plans	
Author	Checked by	Scale	
OMS/AC	AC	1 : 50	@ A1
Project	Status		
2002	Pre Construction		
Drawing number			
2002-SC-KT-XX-XX-M3-A-2002-SK280-S0	P2		