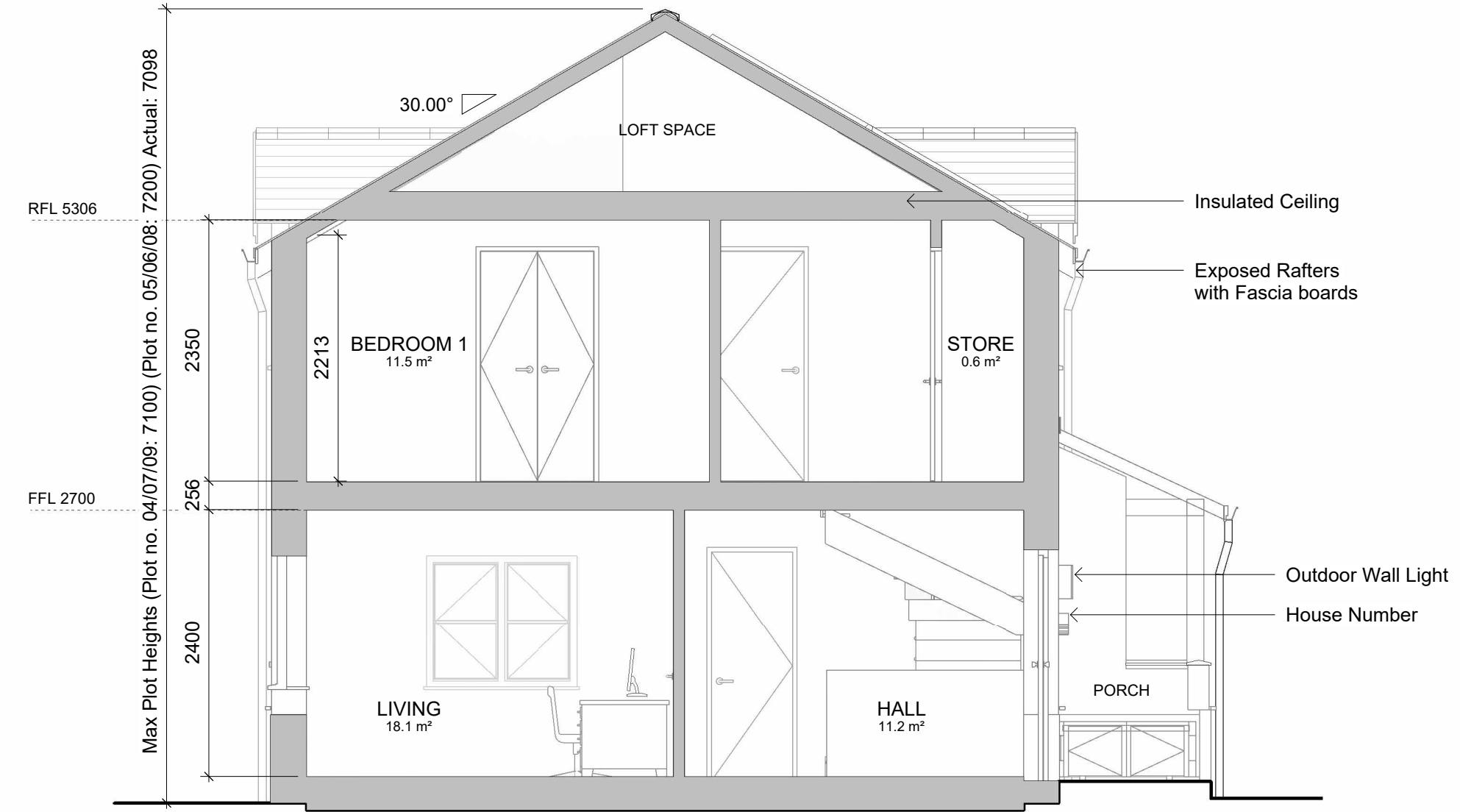
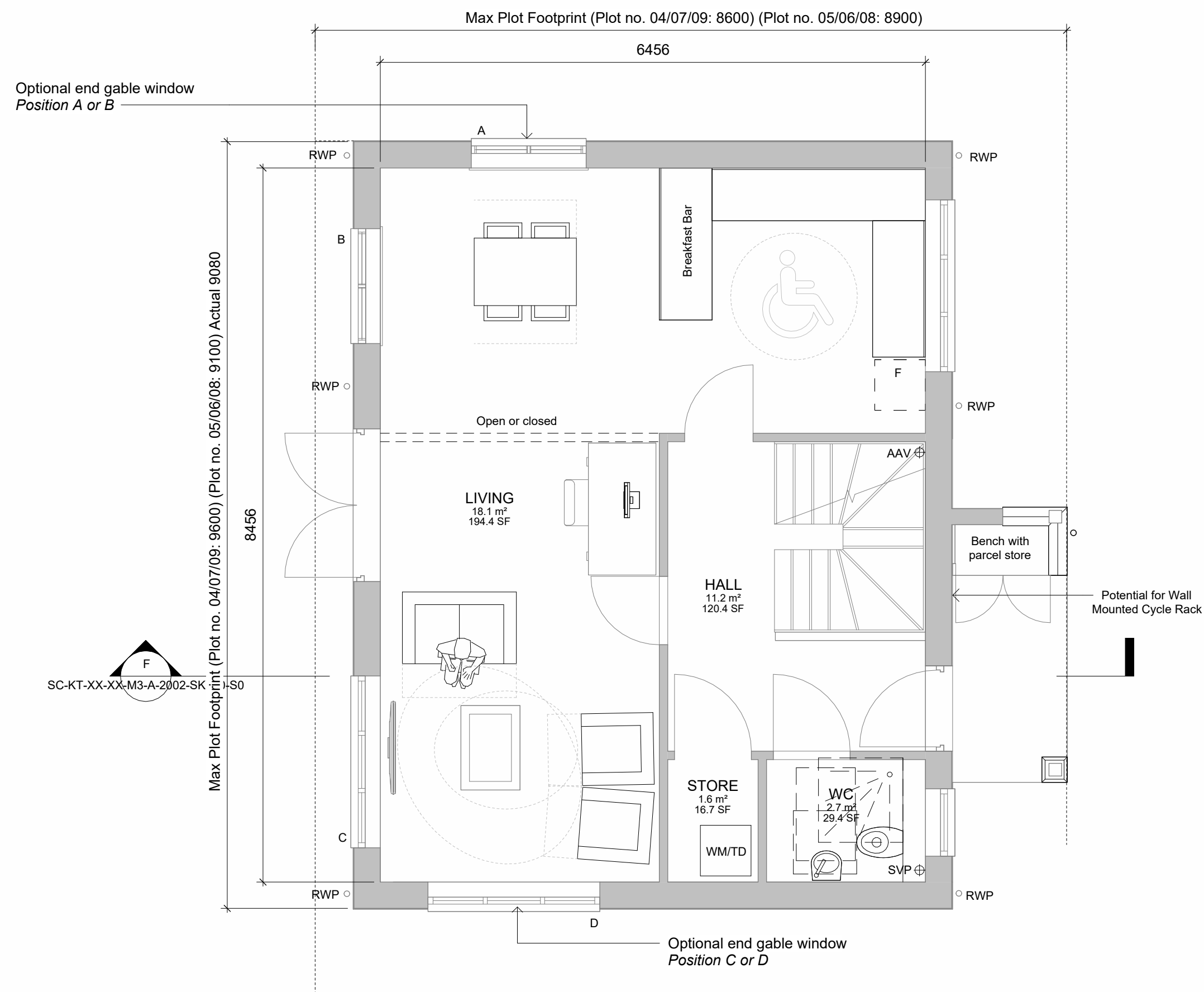


RECEIVED

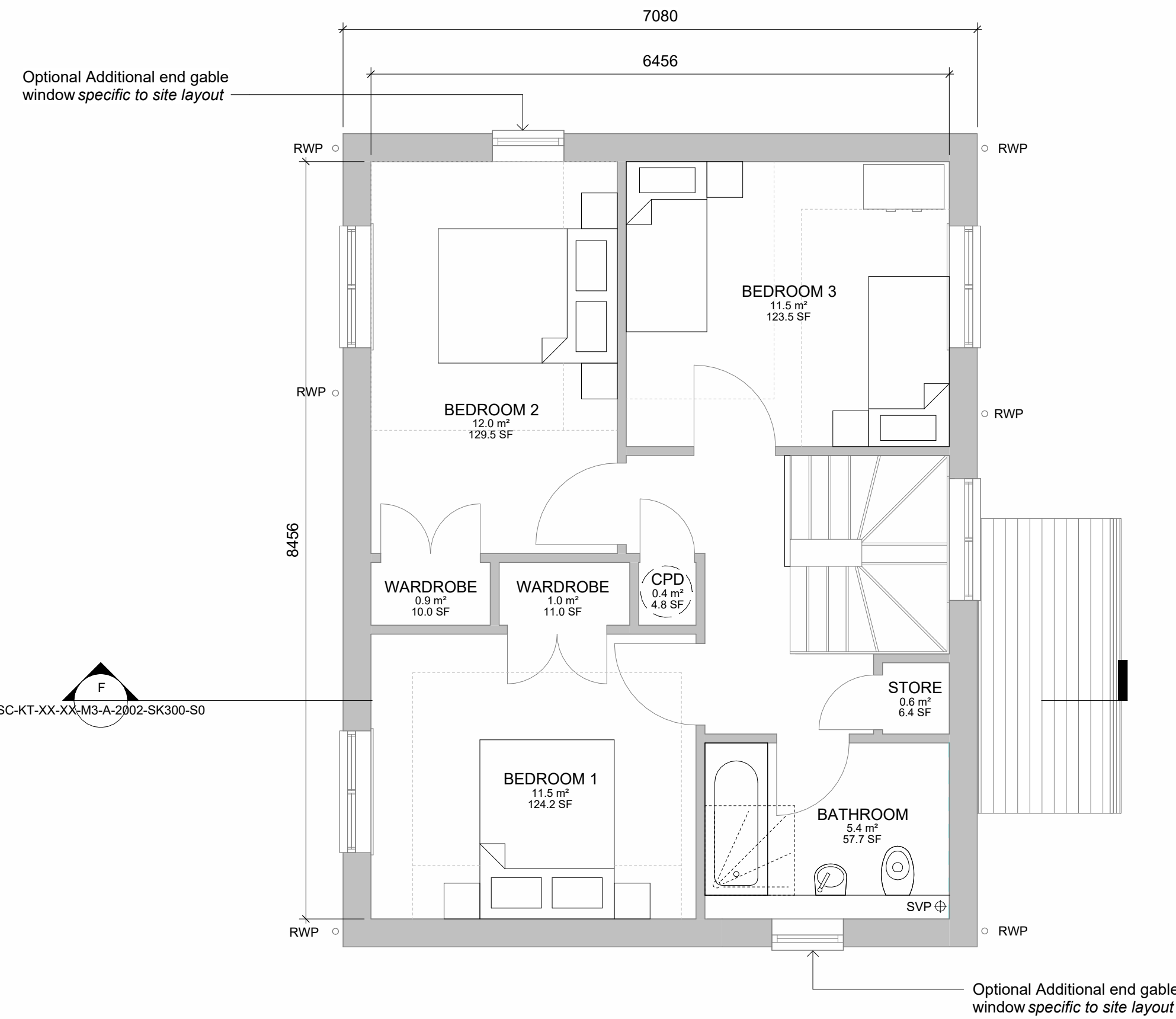
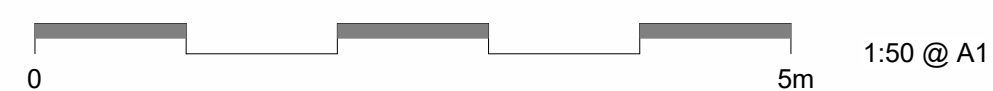
By Liv Rickman at 3:24 pm, Mar 26, 2024



Section F
1 : 50



Ground Floor Plan
1 : 50



First Floor Plan
1 : 50

Contractors to check all dimensions on drawings.
Any discrepancies must be reported to KTA Architects Ltd or the contract administrator before proceeding.
Do not scale except for planning purposes, work to figured dimensions.
A Fire Consultant must be appointed for this project. KTA drawings & schedules to be read in conjunction with the Fire Consultant Fire Strategy Report.
The Fire Strategy Report takes precedence over any KTA drawing or schedule & any discrepancy should be brought to KTA's attention.
This drawing must be read in conjunction with all relevant consultants drawings.
This drawing is © KTA Architects Ltd.

Revision Schedule			
Revision Number	Revision Date	Revision Description	Issued/ Authorised by
P3	MAR 2024	IRMA ISSUE	OMS/AC
P2	24/01/2023	Updated to suit plot passports	SO
P1	22/09/2023	DRAFT issue	EM/AC

HOUSETYPE F
3 Bed 6 Person
Detached or Semi Detached

Part M(4) Category 2

3B/ 6P Housetype F - Front Entrance
GIA: 109.2m²
Storage Area: 4.5m²
Minimum GIA = 102m²
(Technical housing standards - nationally described space standard)

Plot No.	House Type	Max. Plot Height
1	E	7.1m
2	E	7.1m
3	E	7.2m
4	F	7.1m
5	F	7.2m
6	F	7.2m
7	F	7.1m
8	F	7.2m
9	F	7.1m
10	Bespoke Unit	7.2m
11	D	8.4m
12	D	8.4m

* Refer to Outline Planning Permission for Development, Section C11: Restrictions of Building Height. Height measured from GFL to Ridge.

PLANNING ISSUE

KTA
Architects | Urban Designers

Winslade House, Winslade Park, Manor Drive,
Clyst St. Mary, Exeter, EX5 1FY

Tel: 01392 360338
Email: kt@kta.uk.com
Web: www.kta.uk.com

Project
Ennor Housing, Isles of Scilly

Title
Housetype F - Typical Plans

Author	Checked by	Scale
OMS/AC	AC	1 : 50 @ A1
Project	Status	
2002	Pre Construction	
Drawing number		
2002-SC-KT-XX-M3-A-2002-SK300-S0		P3