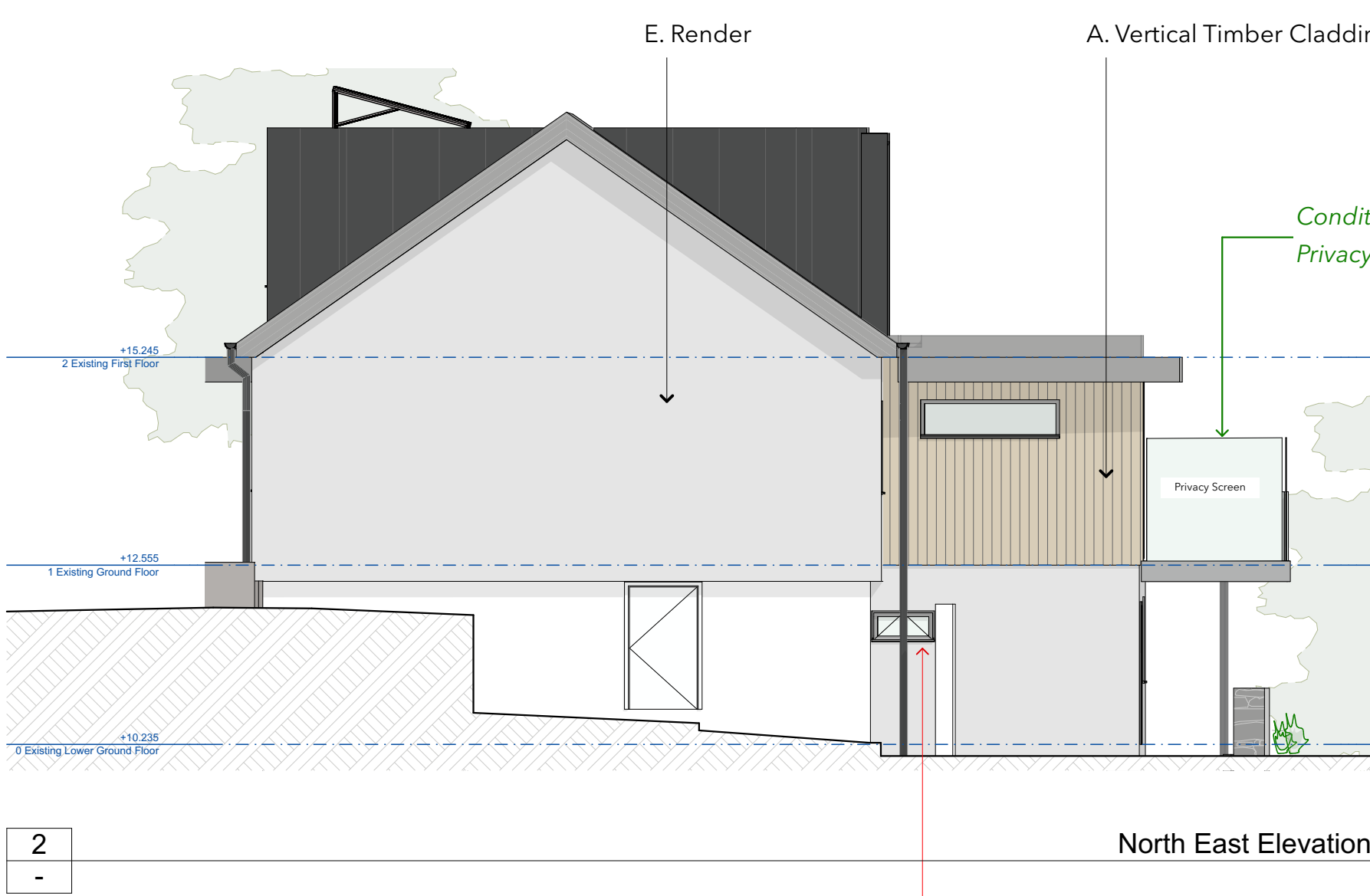
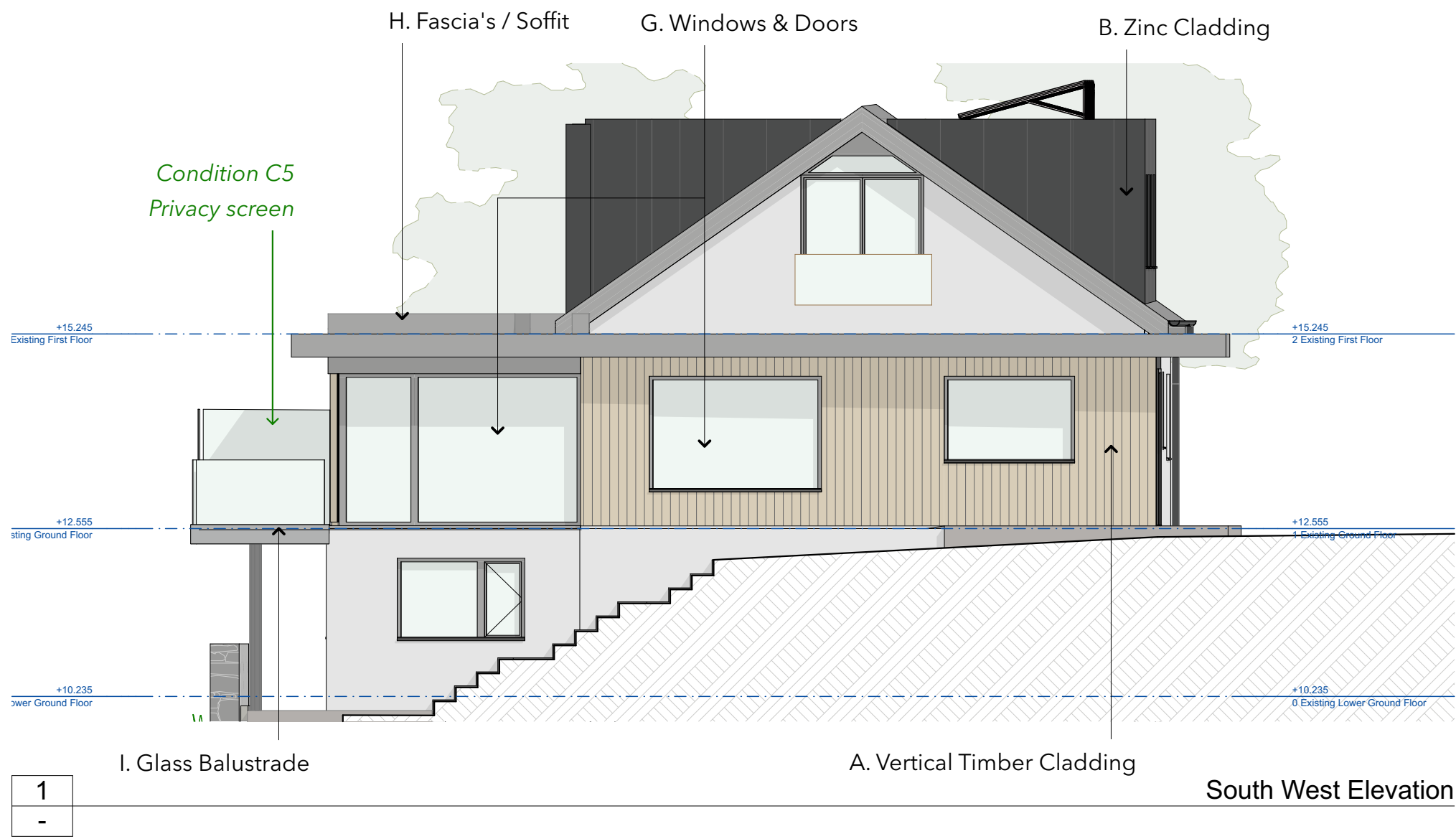


This drawing is not complete until full Building Regulation approval has been granted. Any work carried out before this shall be at the contractor's/client's risk.



Condition C5 - Privacy screen
Glass to be Pilkington Level 4
Height to be no less than 1.7m

PRE-COMMENCEMENT CONDITION: Submission of Balcony Screen details
C5 Prior to the commencement of the development, hereby approved, details of a privacy screen on the balcony shall be submitted to and agreed in writing by the Local Planning Authority. The agreed screen shall be installed, prior to first use of the balcony, and shall be permanently retained as approved thereafter.
Reason: To protect the amenities of the locality, including the amenities of neighbouring residential properties in accordance with Policy LC8(1) of the Isles of Scilly Local Plan (2015-2030).

PRE-COMMENCEMENT CONDITION: Submission of Facade Materials and Finishes
C3 Prior to the commencement of the development, hereby approved, a schedule of external materials finishes and samples to be used on the development shall be submitted to and approved in writing by the Local Planning Authority including windows and doors, timber cladding, stone cladding, roof materials, and glazed balustrades. Thereafter the development shall be carried out in full accordance with the approved schedule and samples.
Reason: To safeguard the appearance of the building and the character of the area and to enable the Local Planning Authority to properly consider the development. It is considered necessary of this to be a pre-commencement condition as these details need to be agreed prior to the construction of the development and thus go to the heart of the planning permission.



Proposed Materials List

Condition C3 - Materials

RECEIVED

By Lisa Walton at 10:59 am, Dec 17, 2025



A. Vertical silvered cladding, boards to be fixed-width



B. Zinc Cladding



C. Slate tile



D. Steel frame balcony



E. Render



F. Powder Coated Aluminium Flashing



G. Windows & Doors - Dark Grey
RAL 7016



H. Grey cladded fascia's & soffits

Revisions

PLANNING

Drawing Issued: 17/12/2025

Coastguard's Retreat

Coastguard's Retreat, St Mary's, Isles of Scilly, TR21 0JQ
John and Nicola Heneghan

Drawing Status
Planning
Drawn By
AM

Drawing Scale
1:50, 1:75 @A1 (50%@A3)
Checked By
CW

All Elevations - Materials

Drawing Title
1:50, 1:75 @ A1 / 50% @ A3

Drawing Number

1221- 420

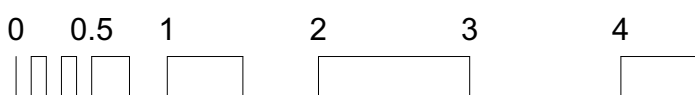
Revision

C

©Barc Architects Ltd 2025

Notes

This document and its design content is copyright ©. It shall be read in conjunction with all other associated project information including models, specifications, schedules and related consultants documents. Do not scale from documents. All dimensions to be checked on site. Immediately report any discrepancies, errors or omissions on this document to the Originator. If in doubt ASK.



barc
Hema Studio, 88 Longbrook Street,
Exeter, EX4 6AP
T: 01392 435 051
E: studio@barcarchitects.com