

HATCHES KEY

MOORINGS APARTMENT (FORMERLY APARTMENT ONE)

SPINNAKER APARTMENT (FORMERLY HOLGATES APARTMENT)

TOPSAIL APARTMENT (FORMERLY WESTERN APARTMENT)

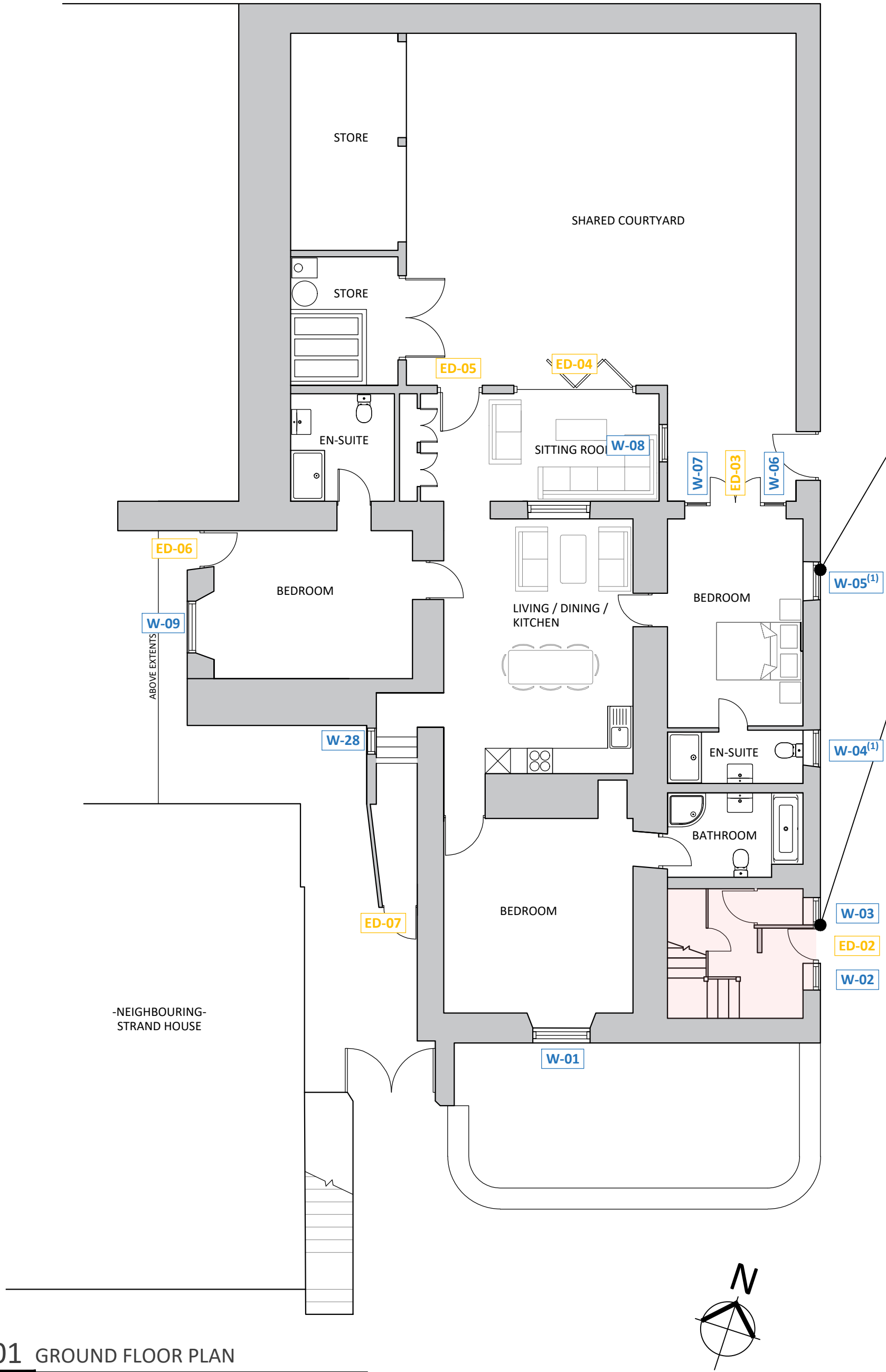
EXTERNAL WINDOW AND DOOR KEY

W-00

WINDOW

ED-00

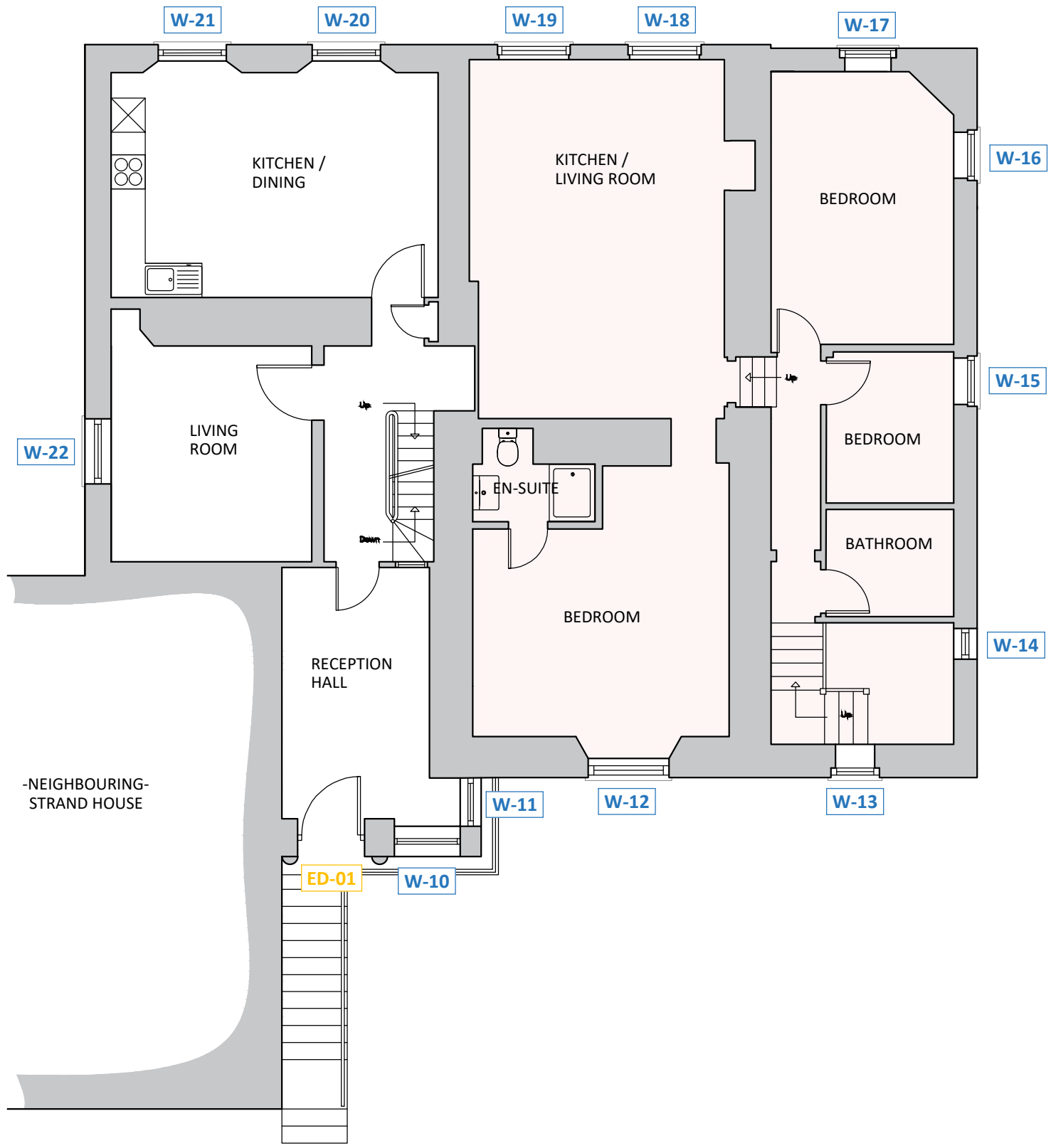
EXTERNAL DOOR



01 GROUND FLOOR PLAN

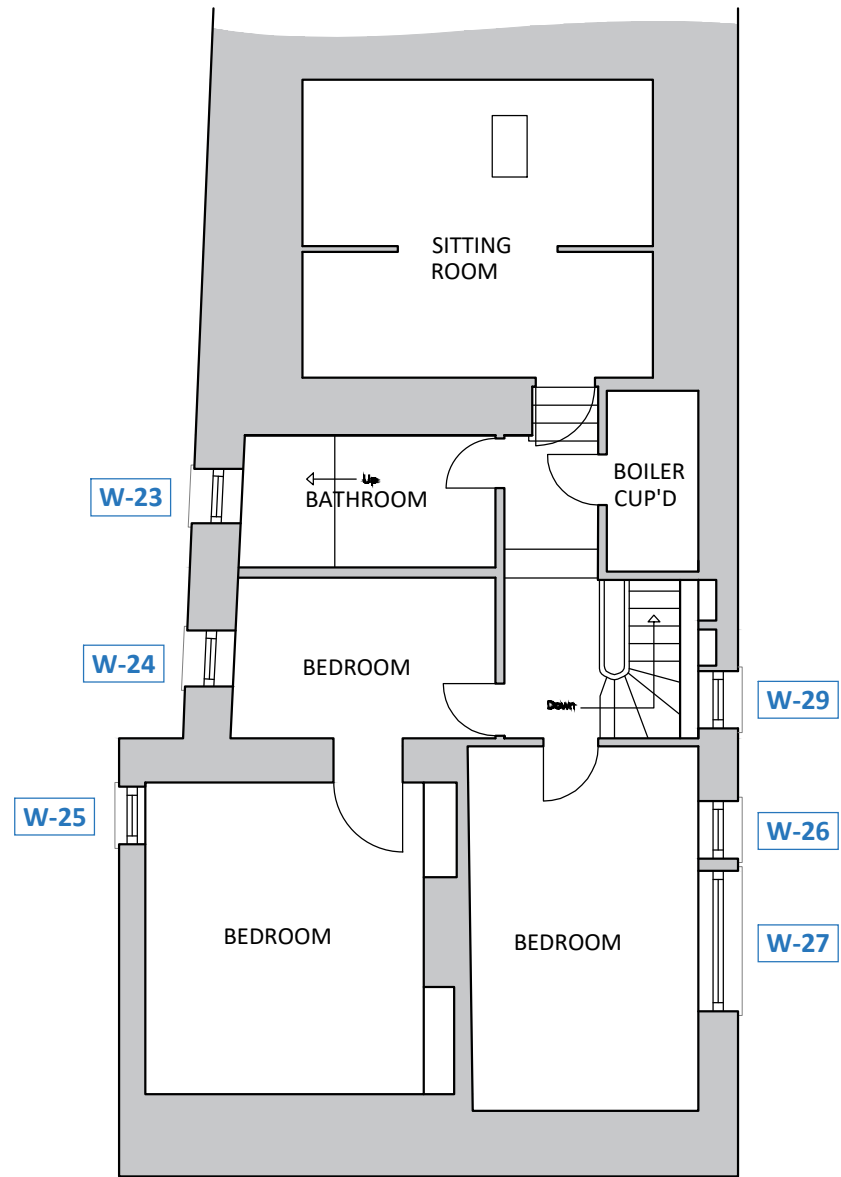
REF 3528-3-100  
SCALE 1:100

ALL EXTERNAL WINDOWS AND DOORS TO BE REPLACED WITH SLIM-LINE DOUBLE GLAZED TIMBER UNITS WITH PROFILES AND PROPORTIONS APPROPRIATE TO EXISTING UNITS - PLEASE REFER TO DAVID GILBERT JOINERY LTD DRAWINGS FOR DETAILS.



02 FIRST FLOOR PLAN

REF 3528-3-100  
SCALE 1:100



03 SECOND FLOOR PLAN

REF 3528-3-100  
SCALE 1:100

RECEIVED  
By Tom.Anderton at 9:24 am, Dec 17, 2025

REV	DESCRIPTION	DATE	INS
A	Loft plan amendments	DEC 25	JM

CAD HERITAGE

THE CONSERVATION DIVISION OF CAD ARCHITECTS LTD  
COURTLEIGH HOUSE, 74-75 LEMON STREET  
TRURO, CORNWALL, TR1 2PN  
CALL: 01872 630 041  
MAIL: info@cadheritage.co.uk  
WEB: www.cadheritage.co.uk

RIBA  
Chartered Practice

DATE	REVISION
NOV 25	JOM
AS SHOWN @ A1	SM

STATUS	DRAWING NO.	REVISION
PLANNING	3528-3-100	

