

HATCHES KEY

MOORINGS APARTMENT (FORMERLY APARTMENT ONE)

SPINNAKER APARTMENT (FORMERLY HOLGATES APARTMENT)

TOPSAIL APARTMENT (FORMERLY WESTERN APARTMENT)

EXTERNAL WINDOW AND DOOR KEY

W-00

WINDOW

(0)

ASSOCIATED GROUP TYPE

ED-00

EXTERNAL DOOR

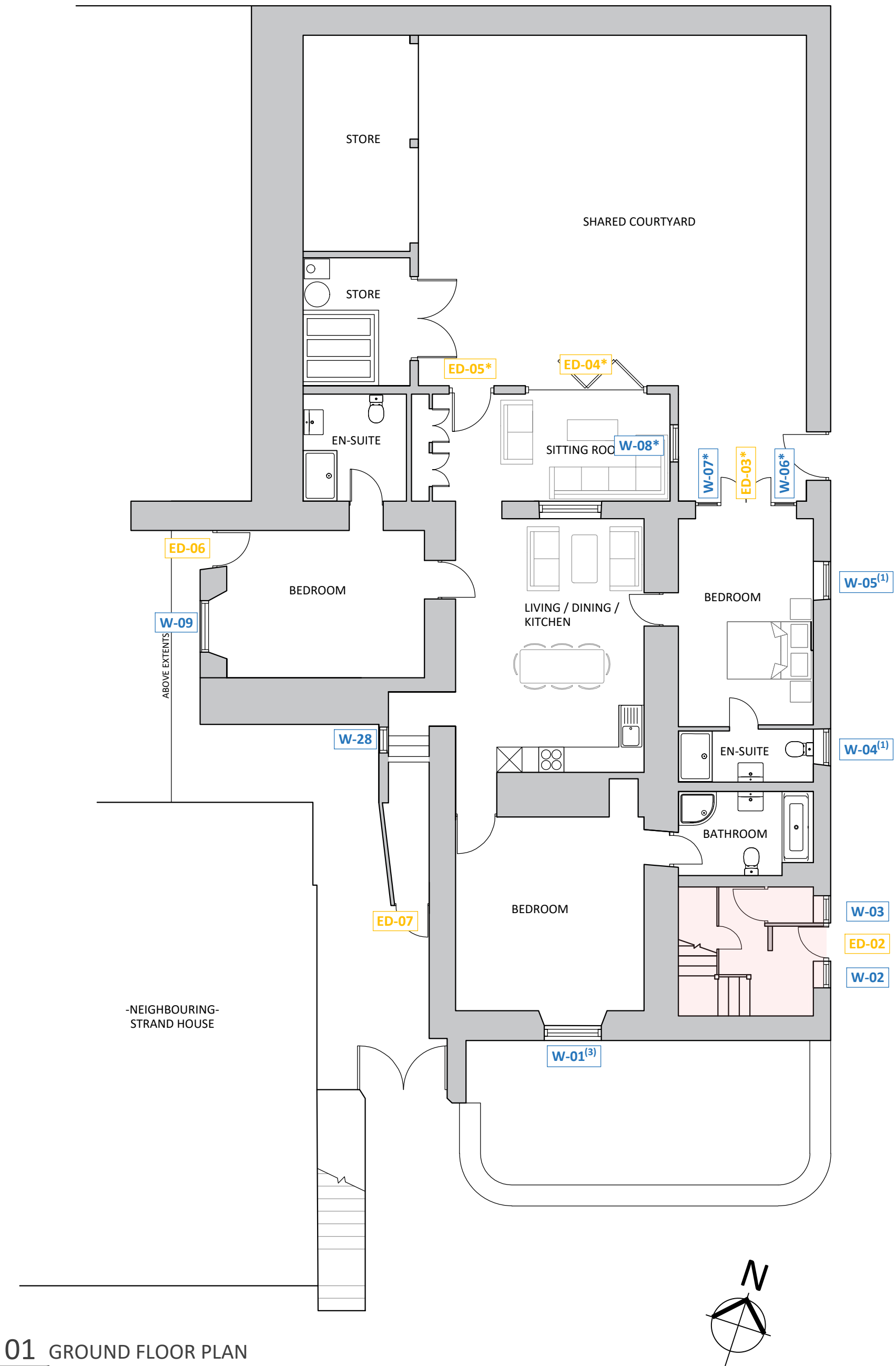
\* DOUBLE GLAZED UNIT

DRAWINGS TO BE READ IN CONJUNCTION WITH JOINERY REPORT, SCHEDULE AND ALL DETAILED WINDOW DRAWINGS.

GROUP TYPE **[1]** - ROUNDED HORN PROFILE  
Please refer to drawing 3528-1-500 for typical group 1 details and defects.

GROUP TYPE **[2]** - ANGULAR HORN PROFILE  
Please refer to drawing 3528-1-501 for typical group 2 details and defects.

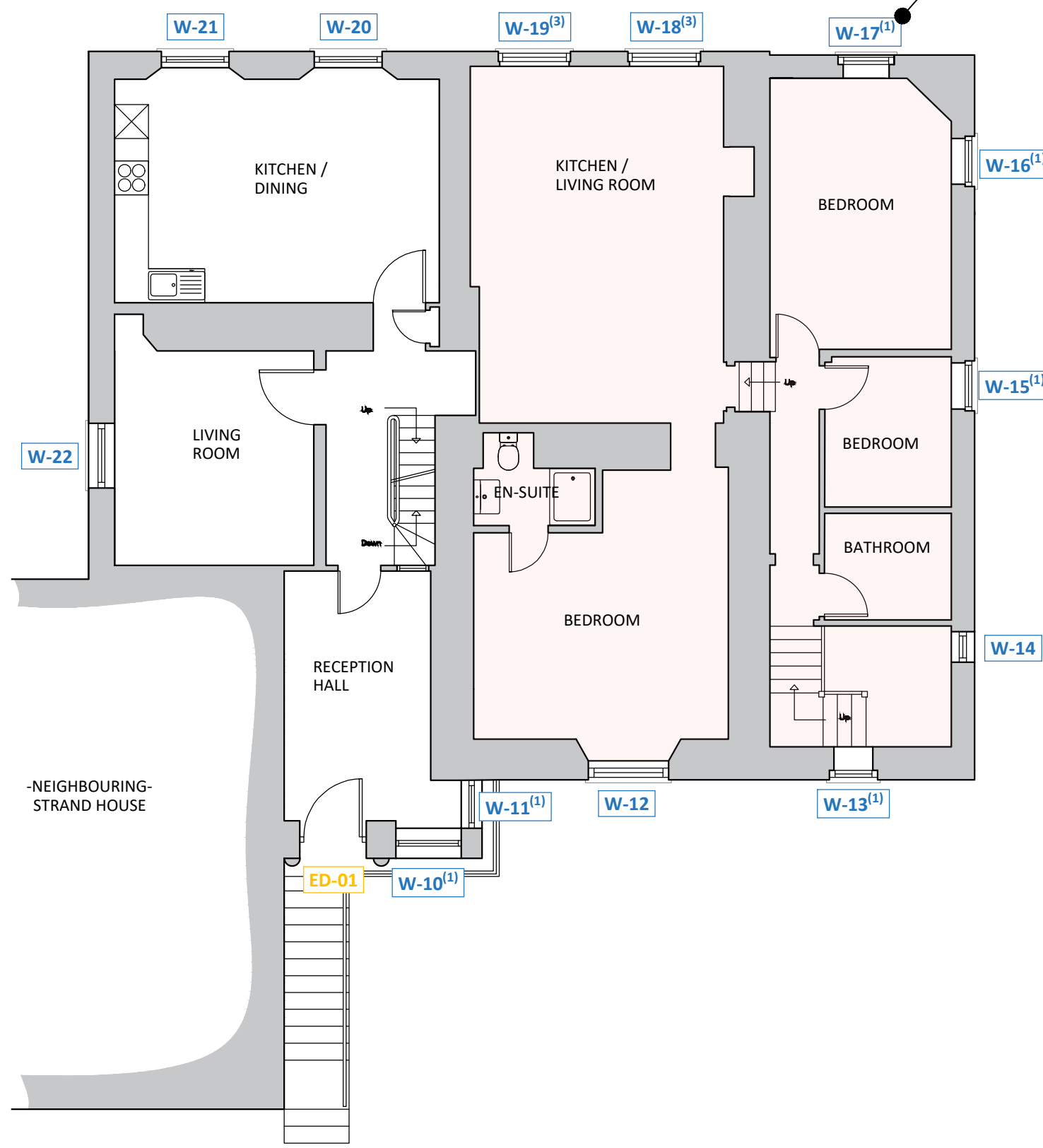
GROUP TYPE **[3]** - CONCAVE HORN PROFILE  
Please refer to drawing 3528-1-502 for typical group 3 details and defects.



01 GROUND FLOOR PLAN

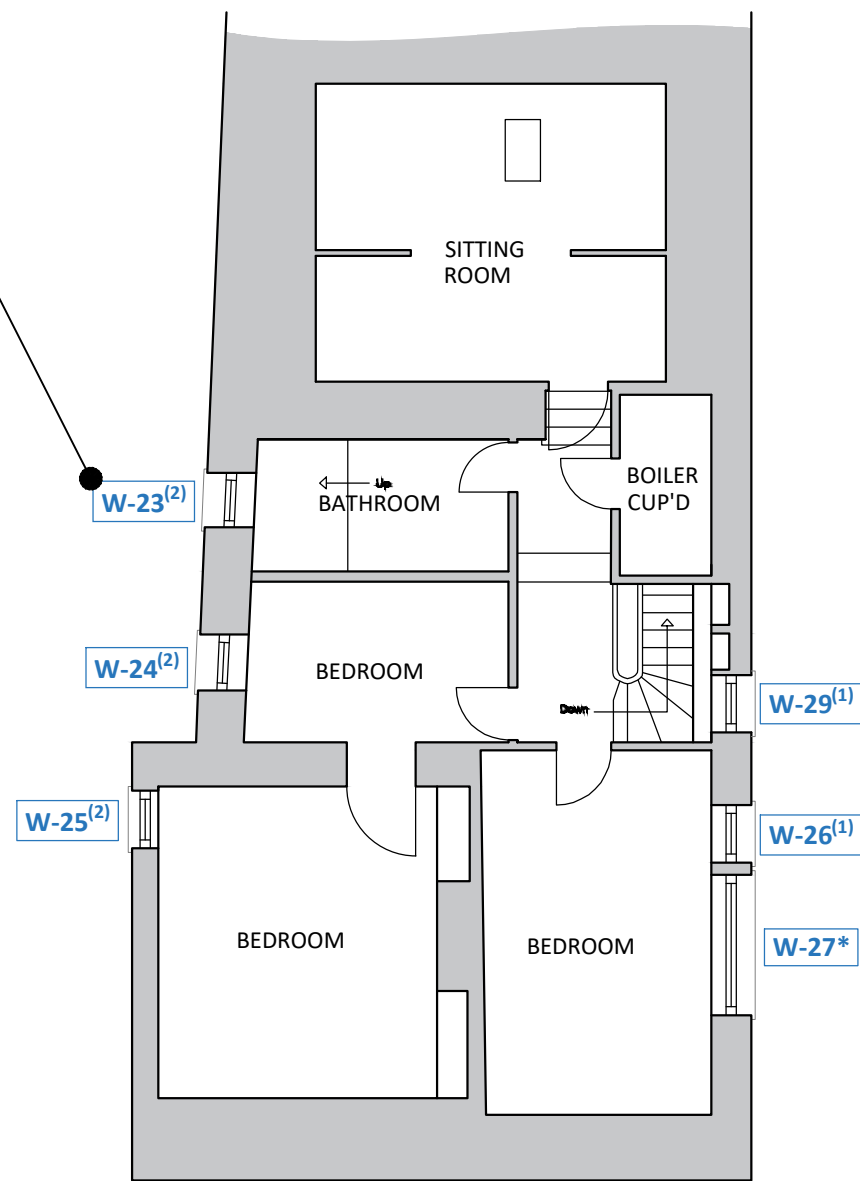
REF 3528-1-100  
SCALE 1:100

GROUPS 1 & 2 SHARE MATCHING GLAZING BAR PROFILES, WITH DIFFERENTIATIONS BEING MADE BASED ON HORN PROFILES.



02 FIRST FLOOR PLAN

REF 3528-1-100  
SCALE 1:100



03 SECOND FLOOR PLAN

REF 3528-1-100  
SCALE 1:100

RECEIVED  
By Tom.Anderton at 9:24 am, Dec 17, 2025

A	Window tags & loft plan amendments	DEC 25	JM
REV	DESCRIPTION	DATE	INS

CAD HERITAGE

THE CONSERVATION DIVISION OF CAD ARCHITECTS LTD  
COURTLEIGH HOUSE, 74-75 LEMON STREET  
TRURO, CORNWALL, TR1 2PN  
CALL: 01872 630 041  
MAIL: info@cadheritage.co.uk  
WEB: www.cadheritage.co.uk

RIBA  
Chartered Practice

DATE	REVISION
ALTERATIONS TO FORMER CUSTOMS HOUSE LOWER STRAND, ST MARYS, ISLES OF SCILLY TR21 0PS	JM
DATE	NOV 25
CLIENT	PAUL GROVES
SCALE	AS SHOWN @ A1
DETAIL	AS EXISTING MIXED FLOOR PLANS
CHECKED	SM

STATUS	DRAWING NO.	REVISION
EXISTING	3528-1-100	

