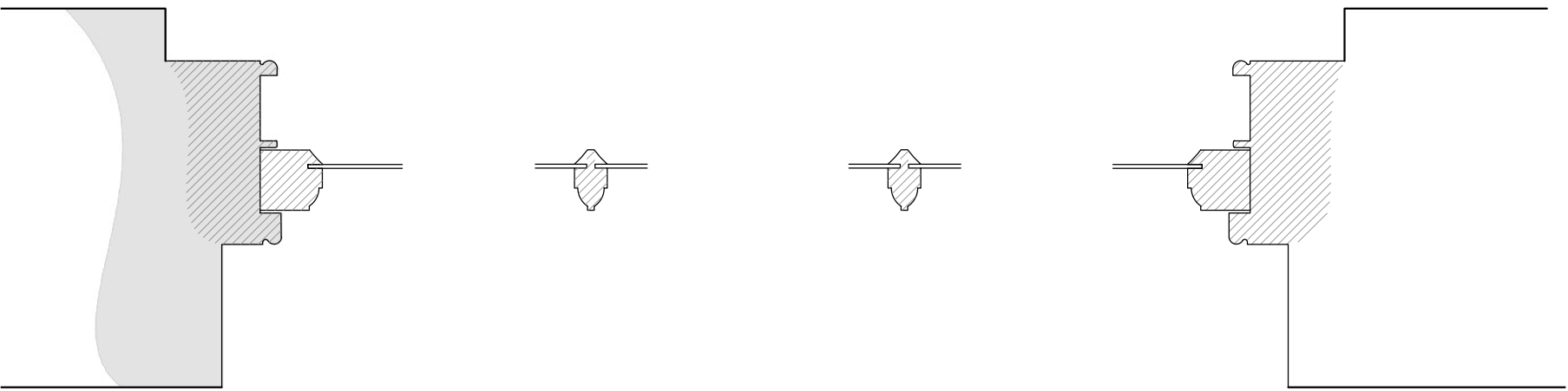


01 GROUP 1 TYPICAL ELEVATION
REF 3528-1-500
SCALE 1:20
W-04, W-05, W-09, W-10, W-11, W-13, W-15, W-16, W-17, W-26, W-29.

02 GROUP 1 GLAZING BAR DETAIL
REF 3528-1-500
SCALE 1:1



03 GROUP 1 TYPICAL PLAN DETAILS
REF 3528-1-500
SCALE 1:5

04 GROUP 1 TYPICAL SECTION DETAILS
REF 3528-1-500
SCALE 1:5



05 GROUP 1 TYPICAL PHOTOGRAPHS
REF 3528-1-500
SCALE N/A

EXTERNAL WINDOW GROUP 1 -
TIMBER VERTICAL SLIDING SASH WITH
ROUNDED HORN PROFILES

Group 1 timber sashes are characterised by their rounded profile of horns. With glazing bar profiles matching those of group 2's. All Convex Horned windows share matching profiles, though panel arrangements vary from 6 over 6, 4 over 4, and 2 over 2 units.

Windows in generally poor condition, with evidence of rot, failed repairs, rusting fixings, and previously replaced timber elements.

Replacements to be heritage slim-line double glazed units as per specialist design - please refer to David Gilbert Joinery Ltd drawings for details.

GROUP 1 - W-04, W-05, W-09, W-10, W-11, W-13, W-15, W-16, W-17, W-26, W-29.

© CAD ARCHITECTS LIMITED
THE DESIGN AND LAYOUT IN THIS DRAWING ARE THE COPYRIGHT OF CAD ARCHITECTS LTD. AND MAY NOT BE AMENDED OR ADAPTED FOR ANY PURPOSE WITHOUT THE EXPRESS WRITTEN APPROVAL OF CAD ARCHITECTS LTD.
THE DRAWING IS TO BE USED SOLELY FOR THE INTENDED PURPOSE AND THE ARCHITECT ACCEPTS NO RESPONSIBILITY FOR ANY ERRORS OR OMISSIONS ARISING THROUGH UNAUTHORISED USE.
CONTRACTORS MUST CHECK ALL DIMENSIONS ON SITE AND ONLY WORK FROM FIGURED DIMENSIONS. TAKE SITE DIMENSIONS FOR ALL FABRICATION WORK. REFER ALL DISCREPANCIES AND REQUIREMENTS FOR ADDITIONAL INFORMATION TO THE ARCHITECT FOR CLARIFICATION OF INSTRUCTION BEFORE PUTTING WORK IN HAND.



06 GROUP 1 TYPICAL DEFECTS
REF 3528-1-500
SCALE N/A

EXTERNAL WINDOW GROUP 1 DEFECTS

Rotting to sashes and box frames, with major replacements and scarfing attempts. Scarfed repairs clearly visible and numerous.

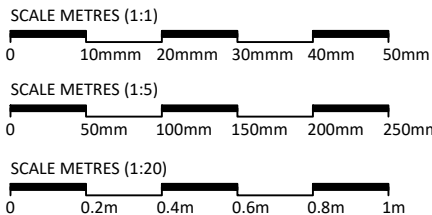
Large areas of previous repairs and alterations are now defective.

Rusting of parting bead pins, with complete separation of many parting beads, with persistent dampness.

Splitting and separation of sash frames at corner abutments.

Rotting of frame internally and externally, with softness to parts of unit's sills.

RECEIVED
By Tom.Anderton at 9:24 am, Dec 17, 2025



REV	DESCRIPTION	DATE	INS
CAD HERITAGE			
THE CONSERVATION DIVISION OF CAD ARCHITECTS LTD COURTLEIGH HOUSE, 74-75 LEMON STREET TRURO, CORNWALL, TR1 2PN CALL: 01872 630 041 MAIL: info@cadheritage.co.uk WEB: www.cadheritage.co.uk			
RIBA  Chartered Practice			
DATE	NOV 25	SCALE	AS SHOWN @ A1
CLIENT	PAUL GROVES	CHECKED	SM
DRAWING NO.	3528-1-500	STATUS	EXISTING