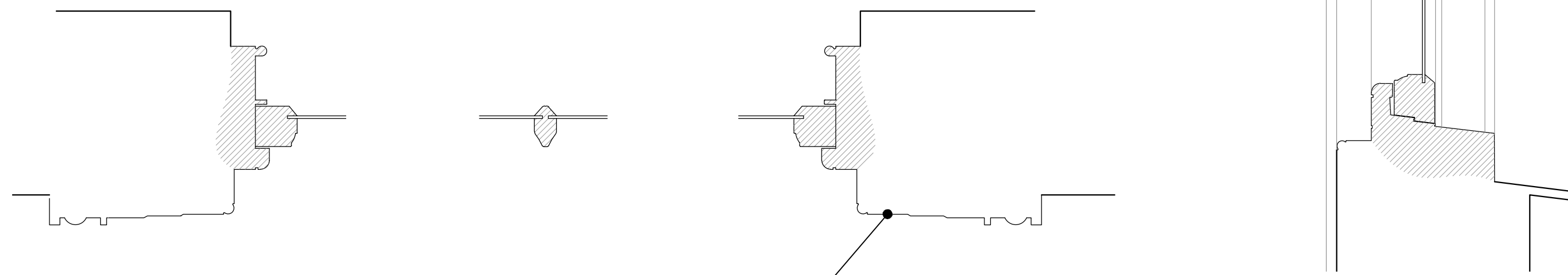


02 GROUP 3 GLAZING BAR DETAIL
REF 3528-1-502
SCALE 1:1

CONCAVE PROFILED HORN TO TOP SASH ONLY

01 GROUP 3 TYPICAL ELEVATION
REF 3528-1-502
SCALE 1:20
W-01, W-18, W-19.

EXTERNAL HANDLES TO WINDOWS W-18 & W-19



03 GROUP 3 TYPICAL PLAN DETAILS
REF 3528-1-502
SCALE 1:5

04 GROUP 3 TYPICAL SECTION DETAILS
REF 3528-1-502
SCALE 1:5

INTERIOR ARCHITRAVES AROUND WINDOWS W-18 & W-19.



05 GROUP 3 TYPICAL PHOTOGRAPHS
REF 3528-1-502
SCALE N/A

EXTERNAL WINDOW GROUP 3 -
TIMBER VERTICAL SLIDING SASH WITH
CONCAVE HORN PROFILES

Group 3 timber sashes are characterised by their concave curving profile of single horn to their exterior, and vertical glazing bar profiles. All Concave Horned windows share matching profiles and are all arranged as 2 over 2 units.

Windows in generally poor condition, with evidence of rot, failed repairs, rusting fixings, replaced timber elements, and cracked glazing.

Replacements to be heritage slim-line double glazed units as per specialist design - please refer to David Gilbert Joinery Ltd drawings for details.

GROUP 3 - W-01, W-18, W-19.

© CAD ARCHITECTS LIMITED
THE DESIGN AND LAYOUT IN THIS DRAWING ARE THE COPYRIGHT OF CAD ARCHITECTS LTD. AND MAY NOT BE AMENDED OR ADAPTED FOR ANY PURPOSE WITHOUT THE EXPRESS WRITTEN APPROVAL OF CAD ARCHITECTS LTD.
THE DRAWING IS TO BE USED SOLELY FOR THE INTENDED PURPOSE AND THE ARCHITECT ACCEPTS NO RESPONSIBILITY FOR ANY ERRORS OR OMISSIONS ARISING THROUGH UNAUTHORISED USE.
CONTRACTORS MUST CHECK ALL DIMENSIONS ON SITE AND ONLY WORK FROM FIGURED DIMENSIONS. TAKE SITE DIMENSIONS FOR ALL FABRICATION WORK. REFER ALL DISCREPANCIES AND REQUIREMENTS FOR ADDITIONAL INFORMATION TO THE ARCHITECT FOR CLARIFICATION OF INSTRUCTION BEFORE PUTTING WORK IN HAND.

LARGE AREAS OF SCARFED REPAIRS



SOFTNESS AND ROTTING TO SASH BOX



PREVIOUS SCARFED REPAIRS SPLINTERING FROM SASH



UNORIGINAL REPLACEMENT VERTICAL GLAZING BARS



SEVERE ROTTING TO BOTH SASH MEETING RAILS



CRACKING TO GLASS PANELS

06 GROUP 3 TYPICAL DEFECTS

REF 3528-1-502
SCALE N/A

EXTERNAL WINDOW GROUP 3 DEFECTS

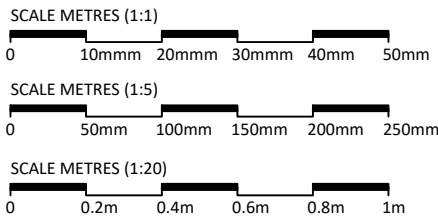
Splitting and separation to sash frames at corner abutments.

Large areas of previous repairs and alterations now defective, with previous scarfed repairs clearly visible where repairs are separating from sashes and frames.

Softness to lower areas of sills and frames. with significant areas of rot to sashes.

Cracking of glass panels.

Rusting of pins / fixings to beading



RECEIVED
By Tom.Anderton at 9:24 am, Dec 17, 2025

REV	DESCRIPTION	DATE	INS
CAD HERITAGE			
THE CONSERVATION DIVISION OF CAD ARCHITECTS LTD COURTLEIGH HOUSE, 74-75 LEMON STREET TRURO, CORNWALL, TR1 2PN CALL: 01872 630 041 MAIL: info@cadheritage.co.uk WEB: www.cadheritage.co.uk			
RIBA  Chartered Practice			
DATE	ALTERATIONS TO FORMER CUSTOMS HOUSE LOWER STRAND, ST MARYS, ISLES OF SCILLY TR21 0PS	DATE	JM NOV 25
CLIENT	PAUL GROVES	SCALE	AS SHOWN @ A1
DRAWN	AS EXISTING WINDOW DETAILS EXTERNAL WINDOW GROUP 3 CONCAVE HORNS	CHECKED	SM
STATUS	EXISTING	DRAWING NO.	3528-1-502
		REVISION	