

EXTERNAL WINDOW AND DOOR KEY

- W-00

WINDOW
- ED-00

EXTERNAL DOOR



01 SOUTH ELEVATION

REF 3528-3-200  
SCALE 1:100



02 EAST ELEVATION

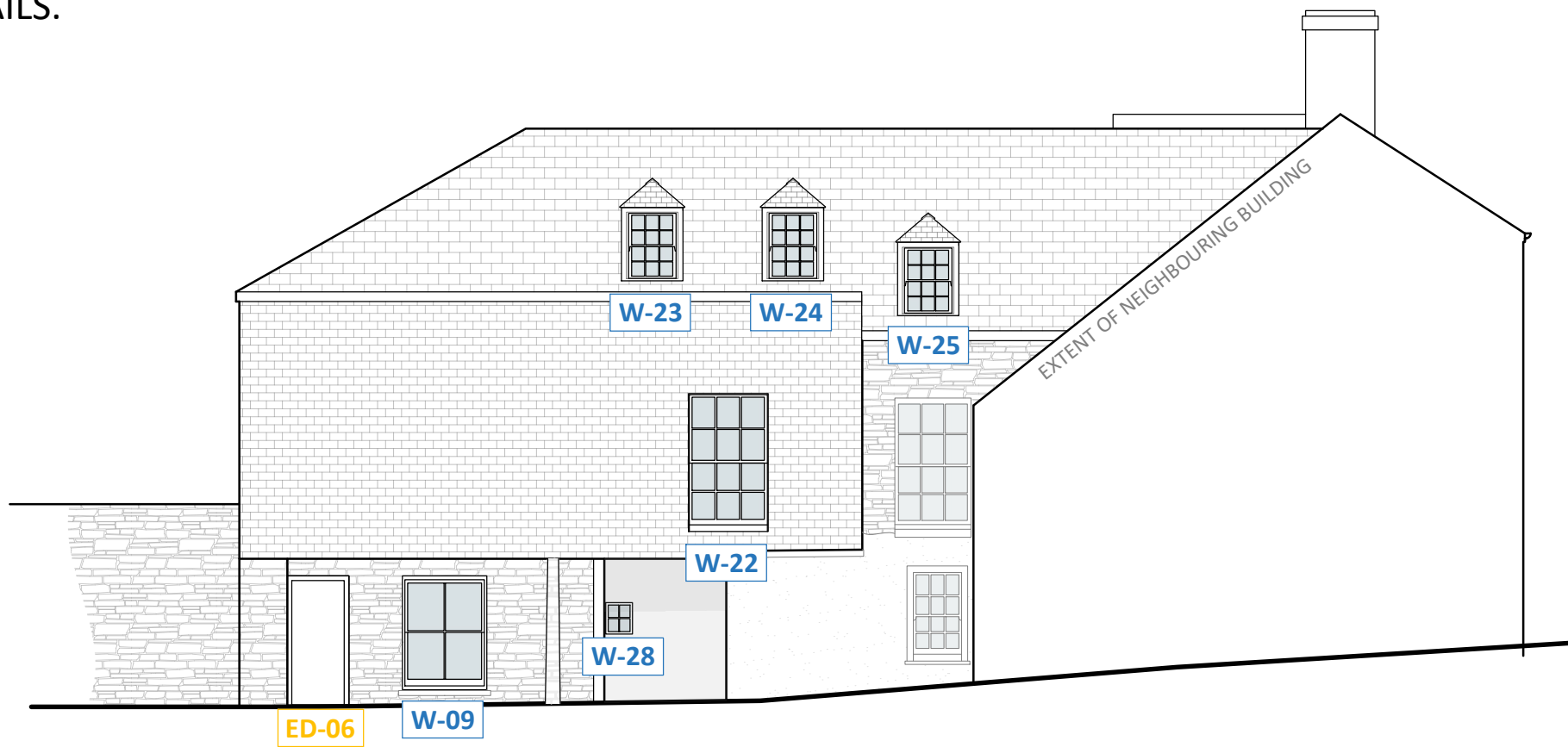
REF 3528-3-200  
SCALE 1:100



03 NORTH ELEVATION

REF 3528-3-200  
SCALE 1:100

ALL EXTERNAL WINDOWS AND DOORS TO BE REPLACED WITH SLIM-LINE DOUBLE GLAZED TIMBER UNITS WITH PROFILES AND PROPORTIONS APPROPRIATE TO EXISTING UNITS - PLEASE REFER TO DAVID GILBERT JOINERY LTD DRAWINGS FOR DETAILS.



04 WEST ELEVATION

REF 3528-3-200  
SCALE 1:100

**RECEIVED**  
By Tom.Anderton at 9:24 am, Dec 17, 2025

SCALE METRES (1:100)  
0 1m 2m 3m 4m 5m 6m 7m 8m 9m 10m

REV	DESCRIPTION	DATE	INS
A	Window tag amendments	DEC 25	JM

**CAD HERITAGE**

THE CONSERVATION DIVISION OF CAD ARCHITECTS LTD  
COURTLEIGH HOUSE, 74-75 LEMON STREET  
TRURO, CORNWALL, TR1 2PN  
CALL: 01872 630 041  
MAIL: info@cadheritage.co.uk  
WEB: www.cadheritage.co.uk

**RIBA**   
Chartered Practice

PROJECT ALTERATIONS TO FORMER CUSTOMS HOUSE LOWER STRAND, ST MARYS, ISLES OF SCILLY TR21 0PS	CLIENT PAUL GROVES	DETAIL AS PROPOSED ELEVATIONS	DESIGNER JM DATE NOV 25 SCALE AS SHOWN @ A1 CHECKED SM
--	-----------------------	-------------------------------------	---

STATUS PLANNING	DRAWING NO. 3528-3-200	REVISION
--------------------	---------------------------	----------