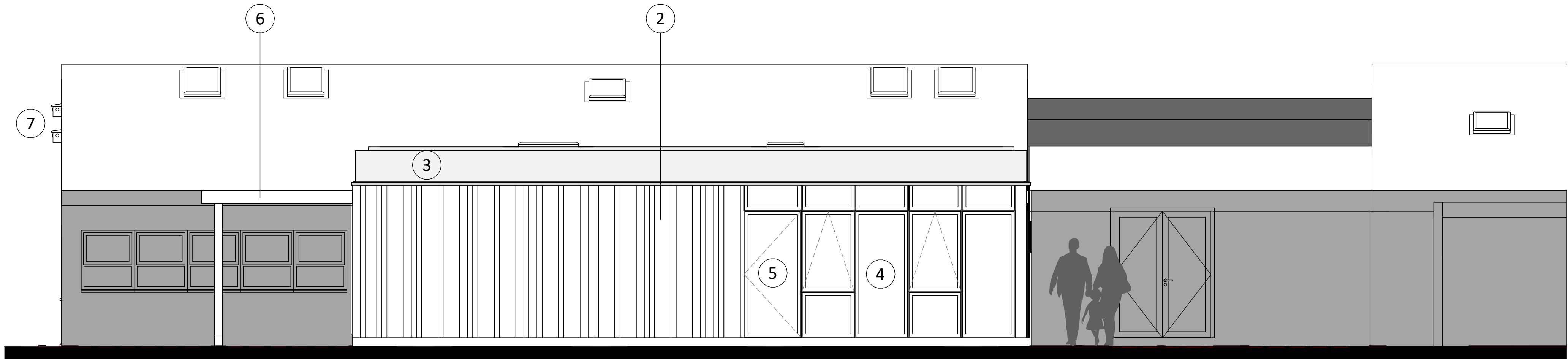




Proposed North Elevation
1 : 50



Proposed East Elevation
1 : 50



Contractors to check all dimensions on drawings.

Any discrepancies must be reported to KTA Architects Ltd or the contract administrator before proceeding.

Do not scale except for planning purposes, work to figured dimensions.

A Fire Consultant must be appointed for this project. KTA drawings & schedules to be read in conjunction with the Fire Consultant Fire Strategy Report.

The Fire Strategy Report takes precedence over any KTA drawing or schedule & any discrepancy should be brought to KTA's attention.

This drawing must be read in conjunction with all relevant consultants drawings.

This drawing is © KTA Architects Ltd.

Revision Schedule			
Revision Number	Revision Date	Revision Description	Issued/ Authorised by
Ob. : Obscure Glazing			
Proposed Materials			
1. Colour coated louvres (ventilation)			
2. Timber cladding			
3. Colour coated metal fascia			
4. Colour coated aluminium windows			
5. Colour coated aluminium doorsets			
6. Timber 'pergola'			
7. x2, 3-Bay Bird Boxes			

RECEIVED

By Tom.Anderton at 1:18 pm, Jan 21, 2026

PLANNING

KTA

Architects | Urban Designers

Winslade House, Winslade Park, Manor Drive,
Clyst St. Mary, Exeter, EX5 1FY

Tel: 01392 360338
Email: kt@kta.uk.com
Web: www.kta.uk.com

Project

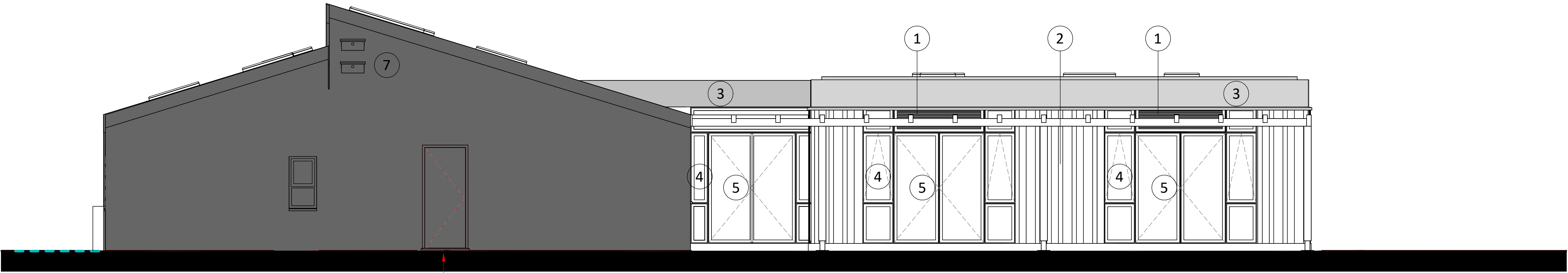
**Belonging and Inclusion Hub,
Carn Gwarvel, St Marys.**

Title

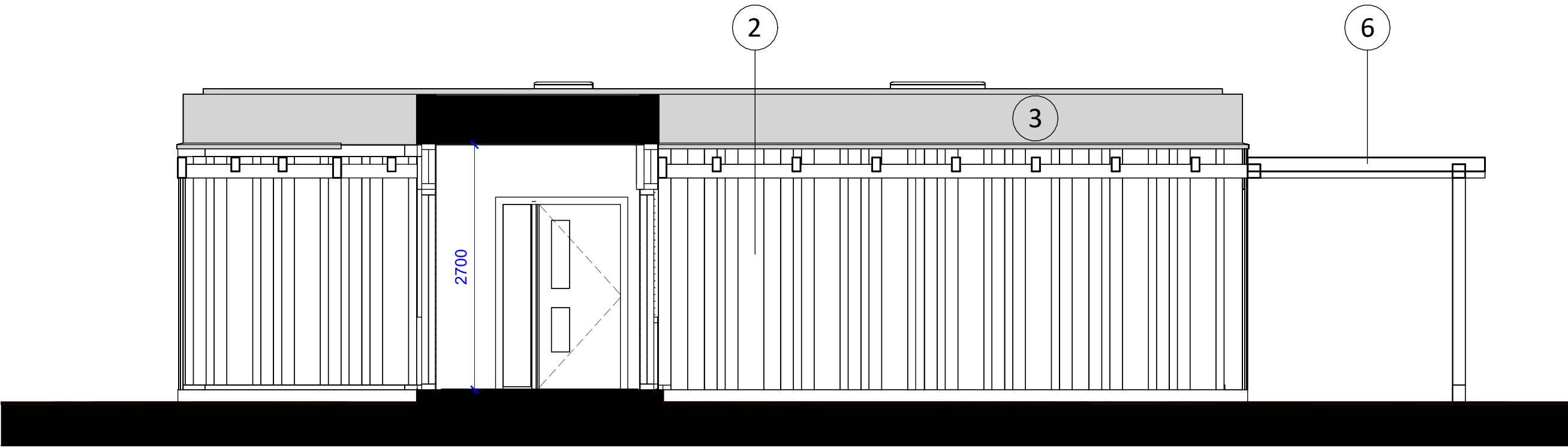
**Proposed North and East
Elevations**

Author	Chkd by	Scale	1 : 50 @ A1
Author	Checker	Status	
24124	Prelim		
Drawing number			
24124-KTA-A-0401			

QMP 128 v1.0 - 24/11/2022



Proposed South Elevation
1 : 50



Proposed West Elevation
1 : 50



Contractors to check all dimensions on drawings.

Any discrepancies must be reported to KTA Architects Ltd or the contract administrator before proceeding.

Do not scale except for planning purposes, work to figured dimensions.

A Fire Consultant must be appointed for this project. KTA drawings & schedules to be read in conjunction with the Fire Consultant Fire Strategy Report.

The Fire Strategy Report takes precedence over any KTA drawing or schedule & any discrepancy should be brought to KTA's attention.

This drawing must be read in conjunction with all relevant consultants drawings.

This drawing is © KTA Architects Ltd.

Revision Schedule			
Revision Number	Revision Date	Revision Description	Issued/ Authorised by

Proposed Materials

1. Colour coated louvres (ventilation)

2. Timber cladding

3. Colour coated metal fascia

4. Colour coated aluminium windows

5. Colour coated aluminium doorsets

6. Timber 'pergola'

7. x2, 3-Bay Bird Boxes

PLANNING

KTA

Architects | Urban Designers

Winslade House, Winslade Park, Manor Drive,
Clyst St. Mary, Exeter, EX5 1FY

Tel: 01392 360338
Email: kt@kta.uk.com
Web: www.kta.uk.com

Project

**Belonging and Inclusion Hub,
Carn Gwarvel, St Marys.**

Title

**Proposed South and West
Elevations**

Author	Chkd by	Scale	@
Author	Checker	1 : 50	A1
Project	Status		
24124	Prelim		
Drawing number			
24124-KTA-A-0402			

QMP 128 v1.0 - 24/11/2022