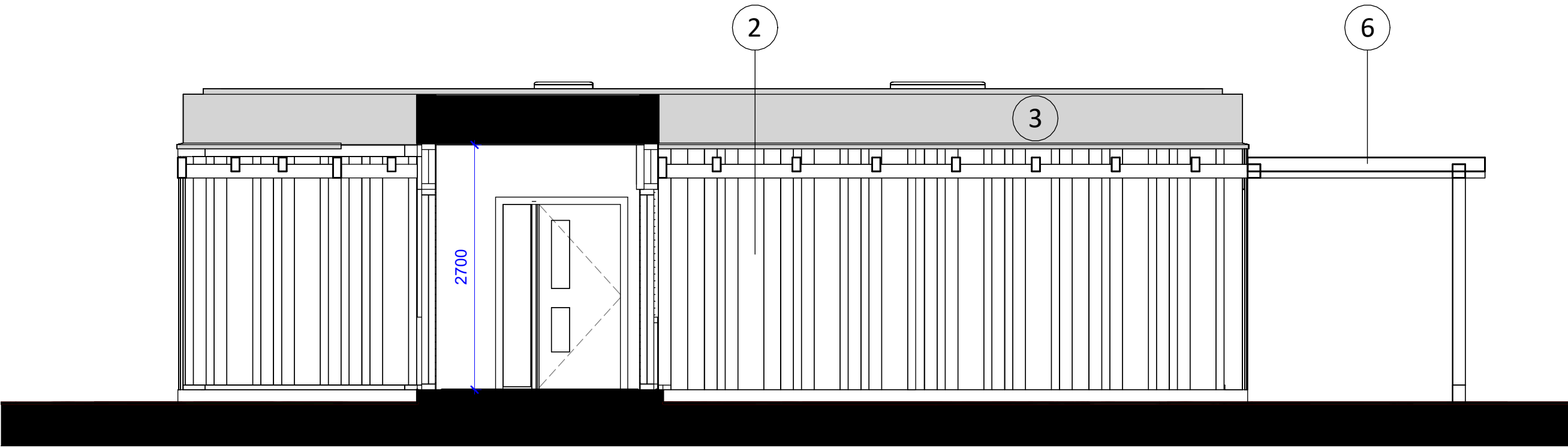


Proposed South Elevation  
1 : 50

New UPVC  
fire exit to  
match  
existing

Proposed Extension



Proposed West Elevation  
1 : 50

Proposed Extension



Contractors to check all dimensions on drawings.

Any discrepancies must be reported to KTA Architects Ltd or the contract administrator before proceeding.

Do not scale except for planning purposes, work to figured dimensions.

A Fire Consultant must be appointed for this project. KTA drawings & schedules to be read in conjunction with the Fire Consultant Fire Strategy Report.  
The Fire Strategy Report takes precedence over any KTA drawing or schedule & any discrepancy should be brought to KTA's attention

This drawing must be read in conjunction with all relevant consultants drawings.

This drawing is © KTA Architects Ltd.

Revision Schedule			
Revision Number	Revision Date	Revision Description	Issued/ Authorised by
Proposed Materials			
1. Colour coated louvres (ventilation)			
2. Timber cladding			
3. Colour coated metal fascia			
4. Colour coated aluminium windows			
5. Colour coated aluminium doorsets			
6. Timber 'pergola'			
7. x2, 3-Bay Bird Boxes			

**RECEIVED**

By Tom.Anderton at 1:18 pm, Jan 21, 2026

**PLANNING**

**KTA**

Architects | Urban Designers

Winslade House, Winslade Park, Manor Drive,  
Clyst St. Mary, Exeter, EX5 1FY

Tel: 01392 360338  
Email: kt@kta.uk.com  
Web: www.kta.uk.com

Project

**Belonging and Inclusion Hub,  
Carn Gwarvel, St Marys.**

Title

**Proposed South and West  
Elevations**

Author	Chkd by	Scale	@
Author	Checker	1 : 50	A1
Project	Status		
24124	Prelim		
Drawing number			
24124-KTA-A-0402			

QMP 128 v1.0 - 24/11/2022